



Carnatic House, Carnatic Road, Mossley Hill, L18 8DR

- Exceptional High End Three Bedroom Penthouse Apartment
- Redefines Luxury Living, Crafted with the Finest Materials
- Exceptional Master Bedroom with Five Piece Ensuite Bathroom
- Private Balcony Terrace with Panoramic Views of Sefton Park
- Coveted Address in the Vibrant Heart of South Liverpool
- Elegant Bespoke Open Plan Kitchen, Lounge & Dining Area
- Stunning Second Bedroom with Ensuite & Versatile Third Room
- Residents Benefit from Secure Underground Off-Road Parking



£1,150,000



CGI Renders-Representative of a Work In Progress and Final Design and Specifications Are Subject To Change



CGI Renders-Representative of a Work In Progress and Final Design and Specifications Are Subject To Change



CGI Renders-Representative of a Work In Progress and Final Design and Specifications Are Subject To Change



CGI Renders-Representative of a Work In Progress and Final Design and Specifications Are Subject To Change



move
residential

CGI Renders - Representative of a Work in Progress and Final Design and Specifications are Subject to Change

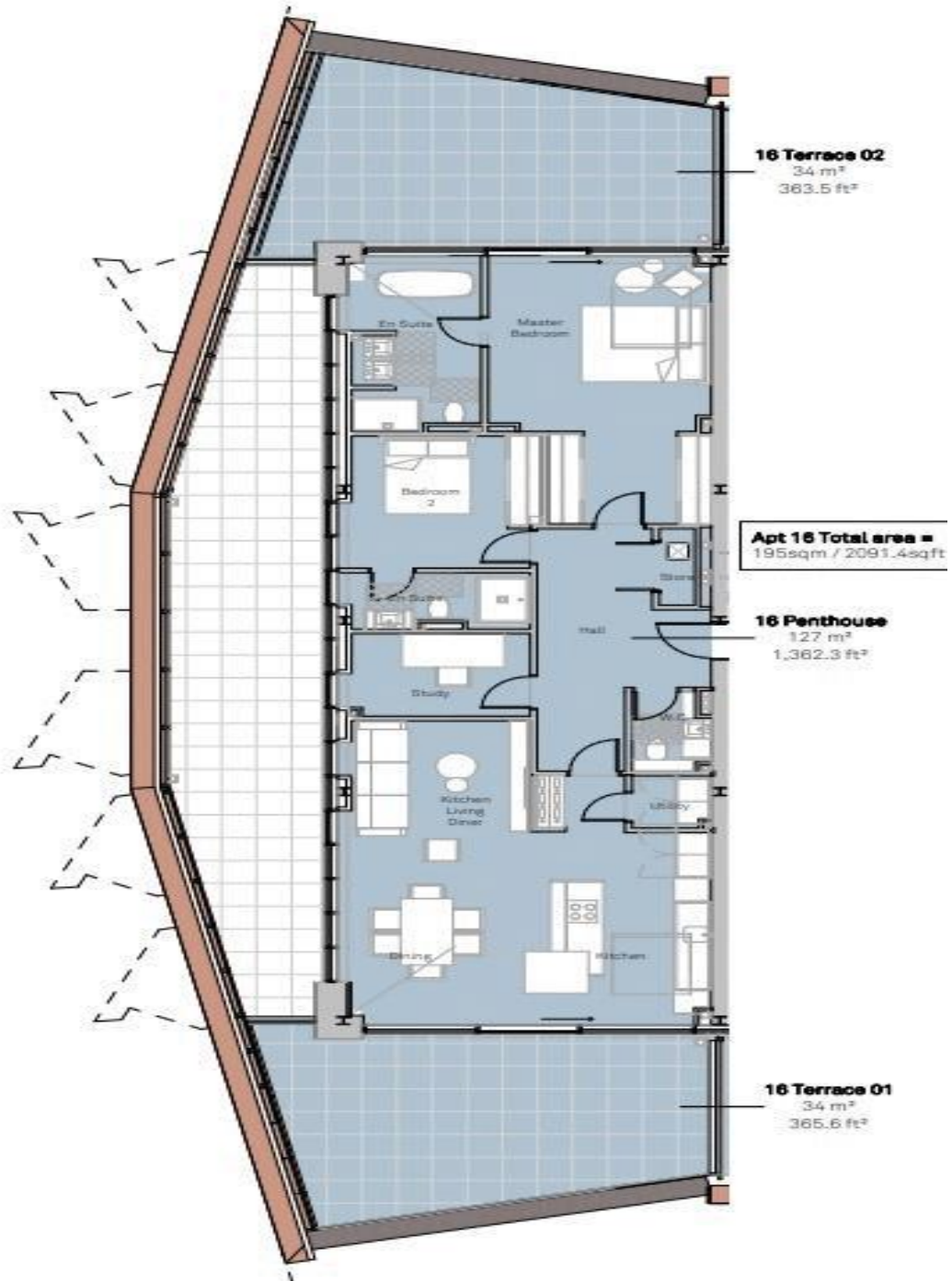
Description

Step into a world of opulence and refinement in this exceptional high-end penthouse. Crafted with meticulous attention to detail and the finest materials, this residence redefines luxury living. The open plan layout seamlessly merges the lounge, dining room, and bespoke fitted luxury kitchen, exuding elegance at every turn. A private balcony terrace extends from the kitchen, providing a southernly haven with panoramic views of perfectly landscaped communal grounds, Sefton Park, and beyond. The bedroom accommodation is a showcase of refined living, featuring a master suite with a five-piece en suite, a second bedroom with custom-built wardrobes and a private en suite, and a versatile third bedroom for a home office or study. This penthouse transcends the ordinary, delivering a lifestyle where every detail ensures comfort, convenience, and aesthetic delight.

Location

Carnatic House is ideally located in the vibrant heart of South Liverpool, offering residents a coveted address just a stone's throw away from the historic Sefton Park. Nestled in this picturesque neighbourhood, Carnatic House provides a unique blend of modern luxury and serene surroundings. Residents can enjoy the convenience of urban living while being immersed in the natural beauty and cultural richness that Sefton Park has to offer. The strategic placement of Carnatic House ensures easy access to local amenities, cultural attractions, and the lush greenery of Sefton Park, creating a distinctive living experience at the intersection of comfort and elegance.

Floor Plan



Additional Information

These particulars are thought to be materially correct though their accuracy is not guaranteed and they do not form part of any contract. All measurements are approximate and we have not tested any fitted appliances, electrical or plumbing installation or central heating systems. Floor plans are for illustration purposes only and their accuracy is not guaranteed.