



Carnatic House, Carnatic Road, Mossley Hill, L18 8DR

- Luxurious and Envious Three Bedroom Duplex Apartment
- Considered Design Over Two Floors with Opulent Finishes
- Three Impeccably Presented & Spacious Double Bedrooms
- Two Private Terraces Offering Picturesque Views of Grounds
- Coveted Location - Close Proximity to Historic Sefton Park
- Open Plan Lounge Kitchen and Diner, with Pantry & Utility
- Ensuite Facilities to All Bedrooms & Dressing Room to Master
- Residents Benefit from Secure Underground Off-Road Parking



£925,000



CGI Renders-Representative of a Work In Progress and Final Design and Specifications Are Subject To Change



CGI Renders-Representative of a Work In Progress and Final Design and Specifications Are Subject To Change



CGI Renders-Representative of a Work In Progress and Final Design and Specifications Are Subject To Change



CGI Renders-Representative of a Work In Progress and Final Design and Specifications Are Subject To Change



CGI Renders - Representative of a Work in Progress and Final Design and Specifications are Subject to Change

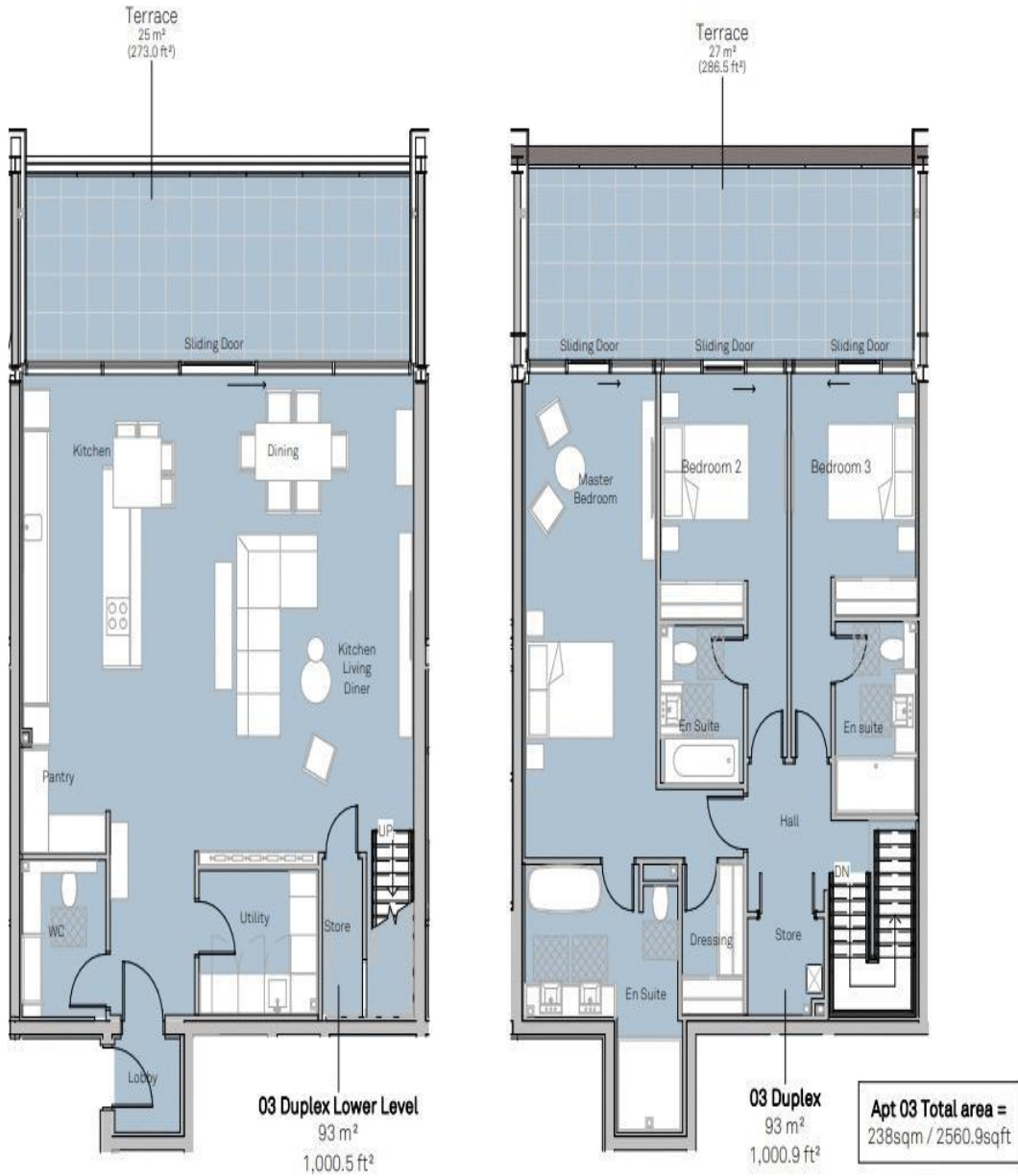
Description

A three-bedroom duplex apartment that is a true testament to the developer's core values and zero compromise approach. Offering a luxury finish and well thought out design over two floors, the property spans over 238m² and will offer an enviable home and a modern luxury lifestyle for its occupants. The property offers a stunning open plan lounge, diner and state of the art, bespoke fitted kitchen with sliding patio doors that open to a spacious private terrace area that overlooks the leafy and well-kept communal grounds. A convenient, fully equipped utility room and pantry offer additional storage space whilst the first floor showcases an elegantly presented master bedroom suite with a luxurious en suite and dressing room. There are a further two double bedrooms which each benefit from private en suite facilities. Completing the property is the second level balcony terrace which offers elevated, picturesque views.

Location

Carnatic House is ideally located in the vibrant heart of South Liverpool, offering residents a coveted address just a stone's throw away from the historic Sefton Park. Nestled in this picturesque neighbourhood, Carnatic House provides a unique blend of modern luxury and serene surroundings. Residents can enjoy the convenience of urban living while being immersed in the natural beauty and cultural richness that Sefton Park has to offer. The strategic placement of Carnatic House ensures easy access to local amenities, cultural attractions, and the lush greenery of Sefton Park, creating a distinctive living experience at the intersection of comfort and elegance.

Floor Plan



Additional Information

These particulars are thought to be materially correct though their accuracy is not guaranteed and they do not form part of any contract. All measurements are approximate and we have not tested any fitted appliances, electrical or plumbing installation or central heating systems. Floor plans are for illustration purposes only and their accuracy is not guaranteed.