



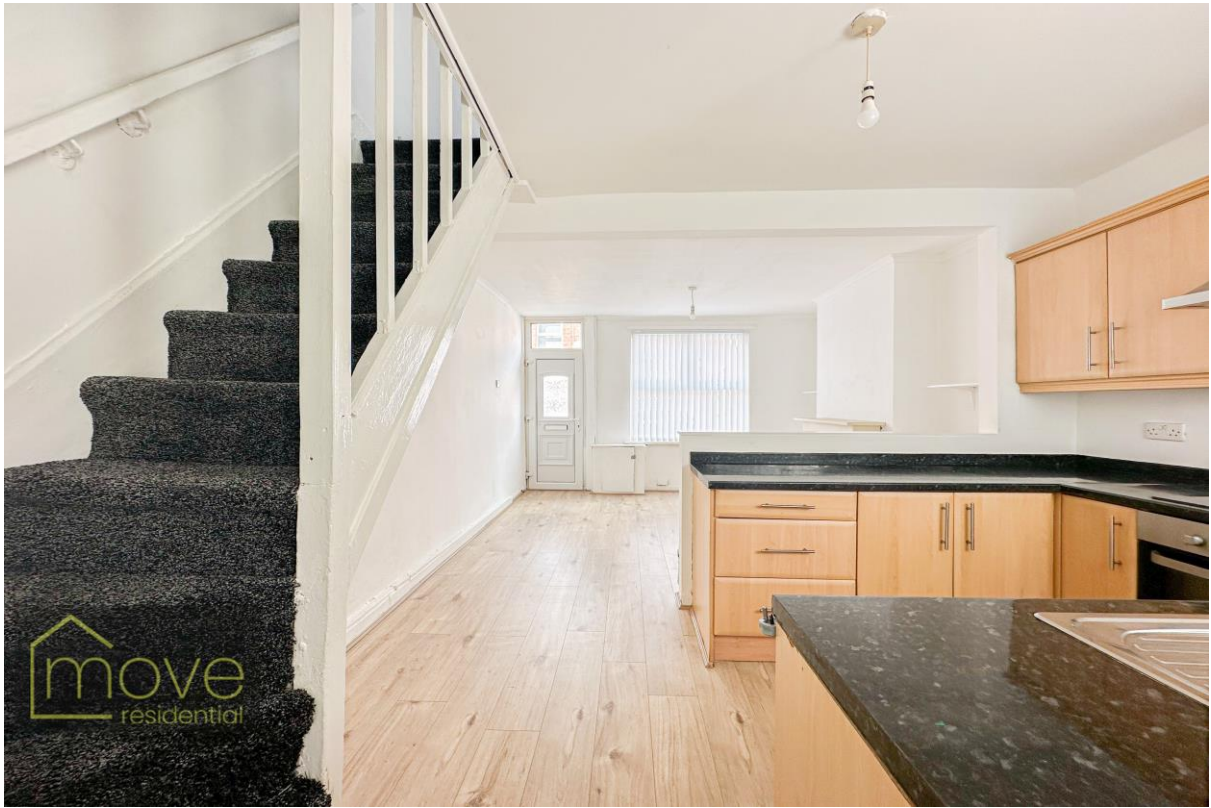
Greenleaf Street, Toxteth, L8 0RA

- Two Bedroom Mid Terrace Property
- Spacious & Modernised Throughout
- Three Piece Family Bathroom Suite
- Ideal Property for First Time Buyers
- Situated in Residential Area of L8
- Open Plan Lounge & Fitted Kitchen
- Two Substantial Double Bedrooms
- Brilliant Opportunity for Investors



£95,000









Description

Located on Greenleaf Street in the popular residential area of L8, is this lovely two bedroom mid terrace home arriving at the sales market courtesy of Move Residential. Offering well-presented and generous living proportions throughout, this would make an ideal purchase for both first time buyers and buy-to-let investors. Entering the property, you are instantly greeted by a bright and spacious open plan living and kitchen area. This space is finished in a modern and neutral décor with attractive wood-style laminate flooring and boasts an eye-catching feature fireplace at the centre. The kitchen is complete with a range of modern fitted base and wall units with complementary worktops offering plentiful surface space. Completing the ground floor is a contemporary style three-piece family bathroom suite. Ascending to the first floor, you will find two generously sized double bedrooms, both finished to an excellent standard.

Location

Enjoying the L8 postcode, the property boasts easy access to the popular Liverpool 1 shopping centre, the world heritage site of The Albert Docks and further amenities brought to you by the city of Liverpool. Tourist attractions including the city's cathedrals are close by, as are supermarkets, churches and schools and restaurants, bars, cafes and cinemas are all a stroll away. Just five minutes to both the Birkenhead and Wallasey tunnels, a short drive to the M62, M57 and M58 motorways and a handful of train links close by, the property sits in an ideal location for any commuter or city worker.

EPC

Score	Energy rating	Current	Potential
92+	A		93 A
81-91	B		
69-80	C	73 C	
55-68	D		
39-54	E		
21-38	F		
1-20	G		

Floor Plan

Awaiting Image.

Additional Information

These particulars are thought to be materially correct though their accuracy is not guaranteed and they do not form part of any contract. All measurements are approximate and we have not tested any fitted appliances, electrical or plumbing installation or central heating systems. Floor plans are for illustration purposes only and their accuracy is not guaranteed.