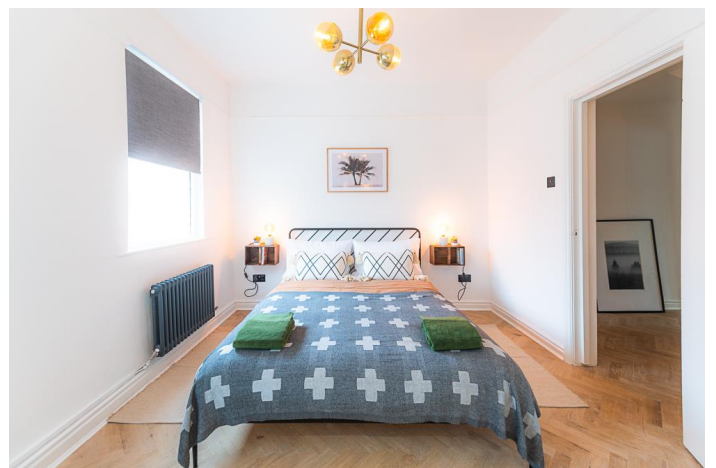




Parkfield Road, Aigburth, Liverpool, L17 8UQ

- Stunning One Bedroom Ground Floor Apartment
- Open Plan Kitchen, Lounge & Diner
- Bright & Spacious Double Bedroom
- Highly Desirable Sefton Park Area
- Effortlessly Chic and Tasteful Decor Throughout
- Modern Fitted Kitchen with Integrated Appliances
- Contemporary Shower Room with Terrazzo Floor Tiles
- Ideal Purchase for First Time Buyers



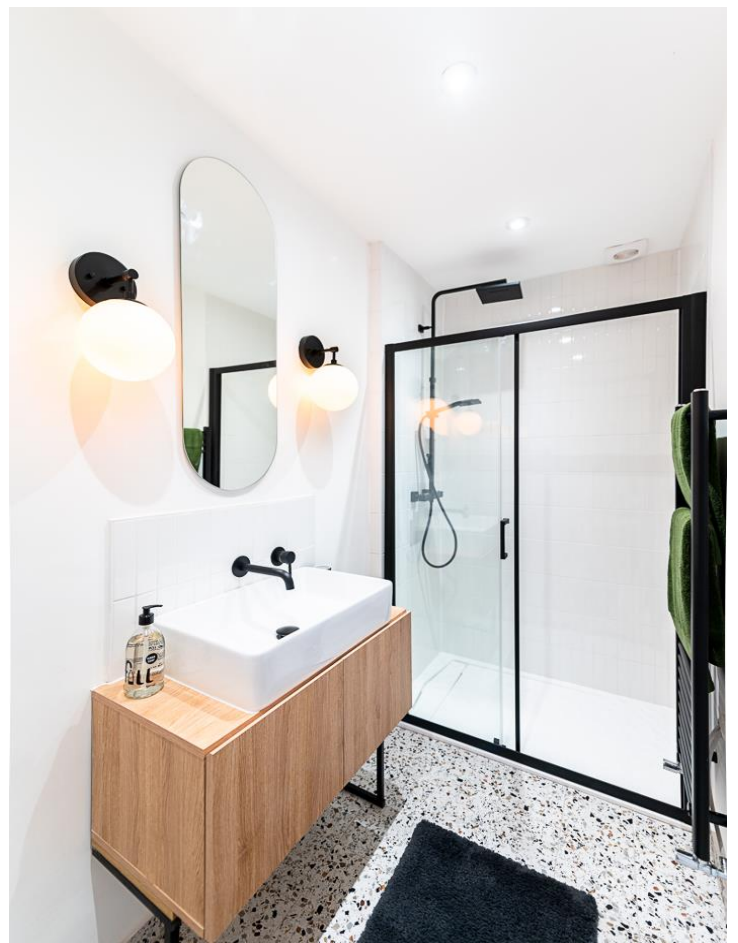
£140,000











Description

Move Residential is delighted to offer for sale this showstopping one bedroom ground floor apartment, perfectly located on Parkfield Road within the desirable leafy suburb of Sefton Park, L17. Recently refurbished throughout, this tastefully presented property will prove to be an ideal purchase for first time buyers and briefly comprises; an entrance hallway, an open plan lounge, kitchen and diner complete with a range of integrated appliances and a generously sized double bedroom which enjoys direct access to a contemporary style shower room suite with striking Terrazzo tiled flooring. Further benefits to this fabulous apartment include double glazing & gas central heating throughout.

Location

Aigburth is a genuinely varied area of Liverpool with plenty of local character, popular with students, investors, professionals and families. Property largely consists of traditional terraced housing (of all sizes) but with some large Victorian Villas around Sefton Park and apartments (both purpose built and converted) appealing to both the buying and rental market. At the heart of the area is Sefton Park, Grade II listed and covering a massive 235 acres it has something for everyone including the spectacular Victorian Palm House. Further open space can be found nearby at the Green Flag rated Greenbank Park. Connecting Aigburth Road to Sefton Park, Lark Lane attracts students, young professionals and families alike to its bohemian mix of shops, restaurants, bars, regular Farmer's Market and unique atmosphere. Further shopping is also available on Aigburth Road and there is no shortage of sport and leisure facilities, including Greenbank Sports Academy, Sefton Park and Liverpool Cricket Clubs, the Mersey Bowman Lawn Tennis Club and several Yoga and Martial Arts centres. Schools in the area are well regarded, including private schools, The Belvedere Academy and Auckland College and St Margaret's and St Hilda's C of E High Schools. Travel connections include Aigburth and St Michael's train stations, main bus routes along Aigburth Road and easy routes to John Lennon Airport and the M62.

EPC

Score	Energy rating	Current	Potential
92+	A		
81-91	B		
69-80	C		76 C
55-68	D	68 D	
39-54	E		
21-38	F		
1-20	G		

Additional Information

These particulars are thought to be materially correct though their accuracy is not guaranteed and they do not form part of any contract. All measurements are approximate and we have not tested any fitted appliances, electrical or plumbing installation or central heating systems. Floor plans are for illustration purposes only and their accuracy is not guaranteed.