



Skywood, Halewood, Liverpool, L26 9TX

****TWO PLOTS REMAINING - FROM £350,495 to £350,995****

- High Specification Fixtures & Fittings
- Impressive Open Plan Kitchen Diner
- En Suite to Master & Family Bathroom
- Highly Desirable Residential Location
- Stunning Four Bedroom Detached Residence
- Bay Fronted Family Lounge
- Ground floor WC & Utility Room
- NHBC Warranty



From £350,495









Description

****TWO PLOTS REMAINING - FROM £350,495 to £350,995 ****

Move Residential are pleased to present to the market, 'Skywood' a stunning four bedroom detached family home located on the newly developed Wilbury Park estate in Halewood, courtesy of Miller Homes. The residence presents a tastefully adorned bay-fronted family lounge, an adaptable dining kitchen perfect for family meals and casual gatherings that features French doors that open to the charming rear garden. Additionally, it includes a practical utility room and a ground floor WC. Ascending to the first floor, discover four generously sized and impeccably presented double bedrooms, one of which enjoys luxurious en suite facilities. Completing the interior is a contemporary three-piece family bathroom suite. Externally, the front offers ample off-road parking with a single integral garage for added storage. The rear boasts a spacious lawned garden with a patio area, creating an ideal setting for alfresco dining and outdoor entertainment.

Ground Floor

Lounge - 3.27m x 4.82m 10'9" x 15'10"

Kitchen - 2.95m x 3.26m 9'8" x 10'9"

Laundry - 1.60m x 2.09m 5'3" x 6'10"

Dining - 2.84m x 3.26m 9'4" x 10'9"

WC - 1.60m x 1.07m 5'3" x 3'6"

First Floor

Bedroom 2 - 2.87m x 3.08m 9'5" x 10'1"

Bedroom 3 - 2.51m x 2.21m 8'3" x 7'3"

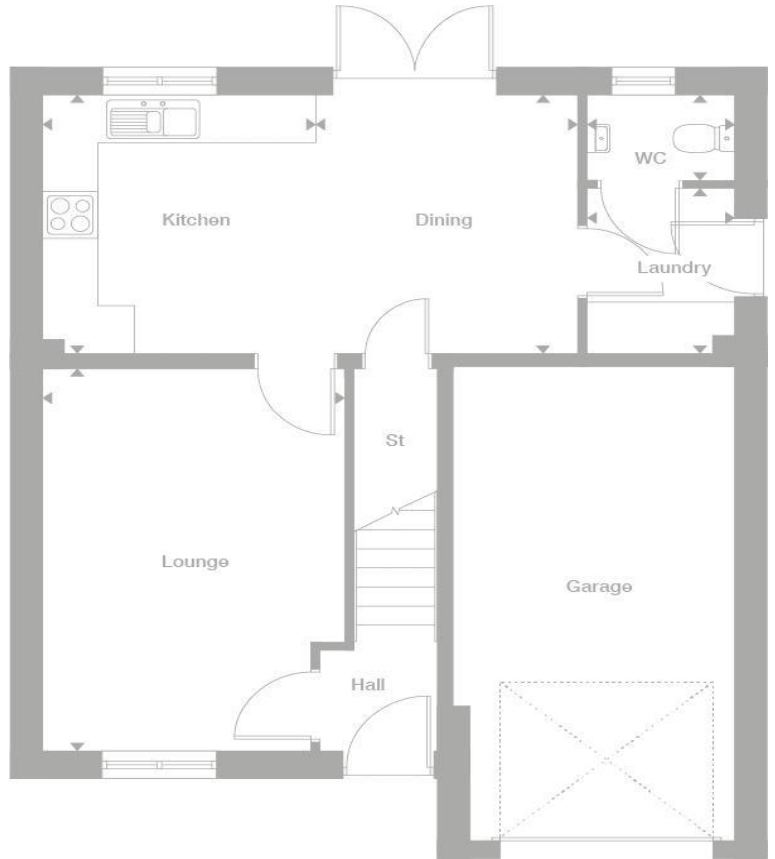
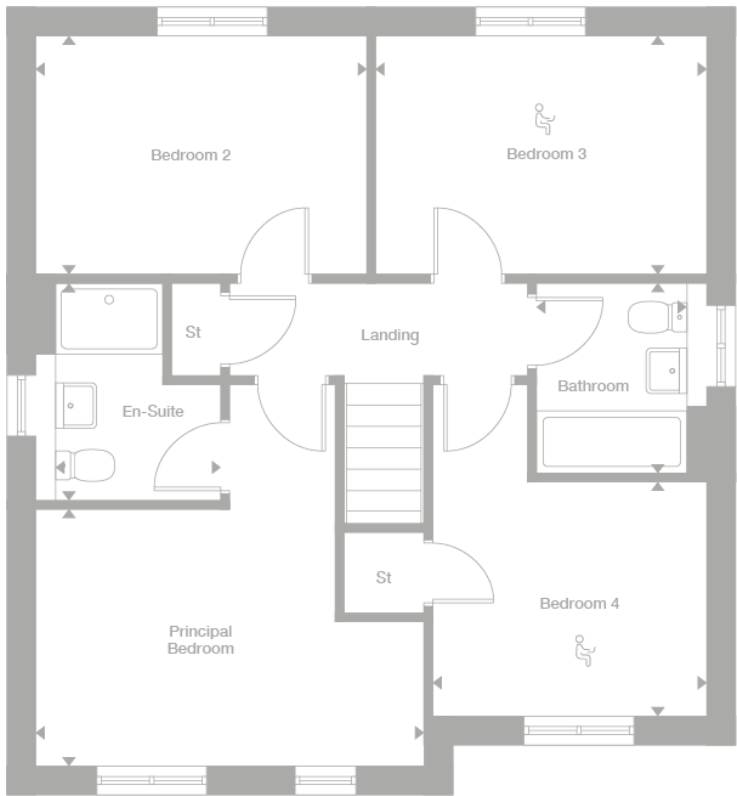
Bedroom 4 - 2.21m x 2.21m 7'3" x 7'3"

Bathroom - 1.70m x 1.94m 5'7" x 6'5"

Second Floor

Principal Bedroom - 4.82m x 4.15m 1.235 HGT. L. 15'10" x 13'7"

En-Suite - 2.46m x 1.62m 1.402 HGT. L. 8'1" x 5'4"



 Office space area



Additional Information

These particulars are thought to be materially correct though their accuracy is not guaranteed and they do not form part of any contract. All measurements are approximate and we have not tested any fitted appliances, electrical or plumbing installation or central heating systems. Floor plans are for illustration purposes only and their accuracy is not guaranteed.