



Kirkwood, Halewood, Liverpool, L26 9TX

- Beautiful Four Bedroom Detached Family Home
- Bay Fronted Family Lounge
- Convenient Ground Floor WC & Utility Room
- Contemporary Style Family Bathroom Suite
- Highly Desirable Location - Close to Local Amenities
- Open Plan Lounge, Kitchen & Dining Room
- Master Bedroom with En Suite & Dressing Room
- Off Road Parking, Garage & Gardens



£367,495









- Ingleton
- Overton
- Masletton
- Wilton
- Catterton
- Kingston
- Kisling
- Rutland
- Skywood
- Maslowood
- Kirkwood
- Waplewood
- Oakwood
- Affordable Housing



Description

Move Residential is delighted to introduce 'Kirkwood,' a splendid four-bedroom detached family home available for sale. Situated within the newly developed Wilbury Park estate in Halewood, L26, courtesy of Miller Homes, this property is a testament to quality and thoughtful design for family living. Impeccably presented, the house boasts top-notch fixtures and fittings, ensuring a high standard of living. The ground floor features a luminous and spacious bay-fronted family lounge, an impressive open plan lounge, kitchen, and dining room at the rear—perfect for family gatherings and relaxation. Additionally, there's a utility room and a convenient downstairs WC. Moving to the first floor, you'll discover four generously sized bedrooms, with one benefiting from a spacious dressing room and a private en suite shower room. The property is completed with a tastefully designed three-piece family bathroom suite. Externally, the front of the house provides ample off-road parking and a single integral garage for extra storage. The rear showcases a sizable, well-maintained lawn with a patio area—ideal for outdoor dining and entertaining. Further advantages include double glazing and gas central heating throughout.

Ground Floor

Lounge - 2.95m x 4.43m 9'8" x 14'7"

Kitchen - 2.86m x 2.68m 9'5" x 8'10"

Laundry - 1.77m x 1.26m 5'10" x 4'2"

Dining - 2.16m x 2.68m 7'1" x 8'10"

Family - 3.14m x 2.36m 10'4" x 7'9"

WC - 1.44m x 1.26m 4'9" x 4'2"

First Floor

Principal Bedroom - 4.03m x 2.75m 13'3" x 9'0"

En-Suite - 2.60m x 1.18m 8'6" x 3'10"

Dressing - 2.60m x 1.42m 8'6" x 4'8"

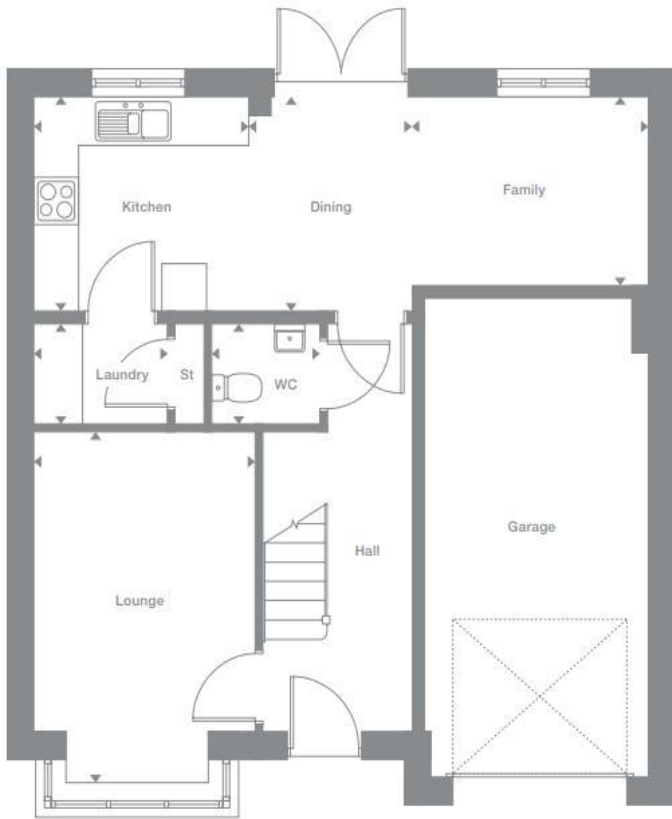
Bedroom 2 - 2.95m x 3.91m 9'8" x 12'10"

Bedroom 3 - 3.04m x 2.87m 10'0" x 9'5"

Bedroom 4 - 2.60m x 3.94m 8'7" x 12'11"

Bathroom - 2.33m x 2.87m 7'8" x 9'5"

Floor Plan



Additional Information

These particulars are thought to be materially correct though their accuracy is not guaranteed and they do not form part of any contract. All measurements are approximate and we have not tested any fitted appliances, electrical or plumbing installation or central heating systems. Floor plans are for illustration purposes only and their accuracy is not guaranteed.