



Oakwood, Halewood, Liverpool, L26 9TX

****THREE PLOTS REMAINING - FROM £404,995 to £414,995****

- High Specification Fixtures & Fittings
- Impressive Open Plan Kitchen Diner
- En Suite to Master & Family Bathroom
- Off Road Parking & Single Garage
- Stunning Four Bedroom Detached Residence
- Bay Fronted Family Lounge
- Ground floor WC & Utility Room
- NHBC Warranty



From £404,995













Plot Information

- Ingleton
See Page 08
- Overton
See Page 10
- Masterston
See Page 12
- Wilton
See Page 14
- Calderton
See Page 16
- Kingston
See Page 18
- Kipling
See Page 20
- Rolland
See Page 22
- Skywood
See Page 24
- Hazelwood
See Page 26
- Kirkwood
See Page 28
- Maplewood
See Page 30
- Oakwood
See Page 32
- Affordable Housing



The artist's impressions (computer-generated graphics) have been

Description

Prices Ranging From £404,995 to £414,995*

Move Residential are pleased to present to the market, 'Oakwood' a stunning four bedroom detached family home located on the newly developed Wilbury Park estate in Halewood, courtesy of Miller Homes. The property offers a beautifully presented bay fronted family lounge, a versatile dining kitchen- perfect for family mealtimes and casual entertaining with French doors that open to the lovely rear garden, a convenient utility room, an office space/study and a ground floor WC. Ascending to the first floor via a superb galleried landing, you will find four generously sized and immaculately presented double bedrooms - one of which benefits from luxurious en suite facilities. Concluding the interior of the property is a modern three piece family bathroom suite. Externally, to the front of the property, ample off road parking is provided with a single detached garage offering additional storage space. To the rear, a spacious lawned garden with patio area offers an ideal spot for alfresco dining and outdoor entertaining.

Location

Lounge 12' 0" x 17' 10" (3.65m x 5.44m)

Kitchen - 11' 0" x 9' 10" (3.36m x 2.99m)

Utility Room - 6' 10" x 5' 5" (2.08m x 1.66m)

Family/Dining Room - 12' 5" x 12' 9" (3.78m x 3.88m)

Study - 6' 10" x 6' 7" (2.08m x 2.01m)

WC - 6' 10" x 3' 8" (2.08m x 1.13m)

Master Bedroom - 12' 0" x 10' 6" (3.65m x 3.21m)

En Suite - 7' 10" x 4' 3" (2.4m x 1.3m)

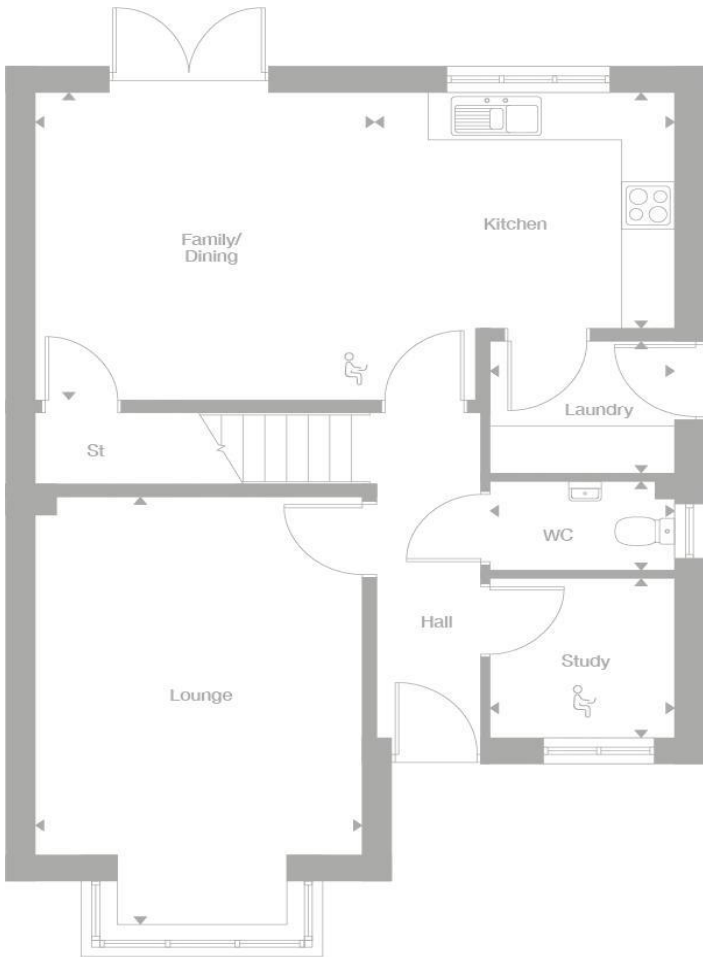
Bedroom Two - 12' 5" x 9' 0" (3.79m x 2.75m)

Bedroom Three - 10' 8" x 9' 0" (3.26m x 2.74m)

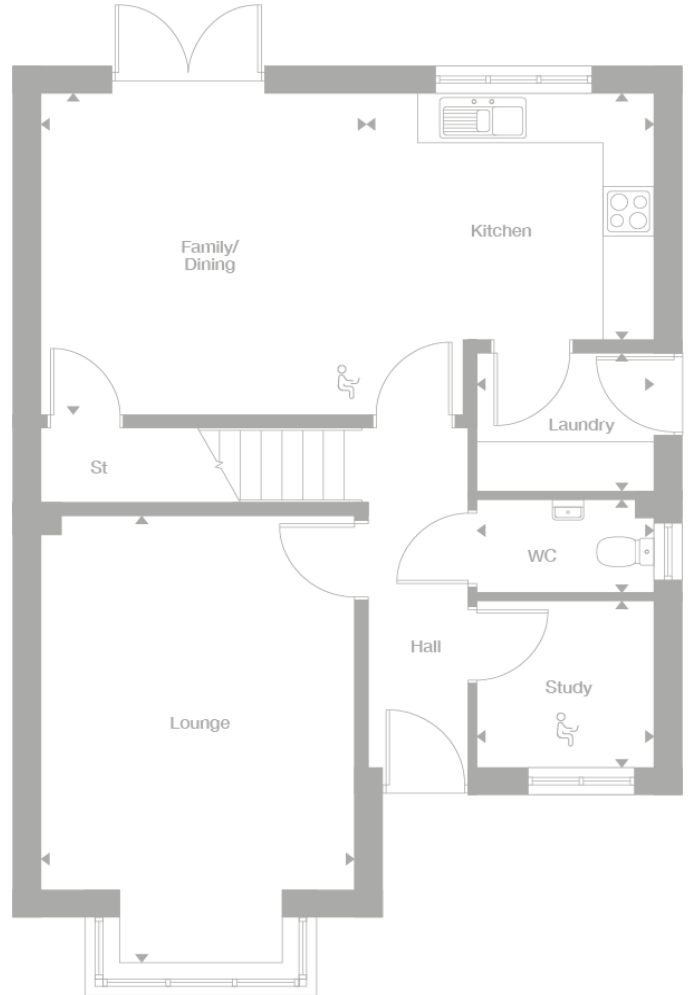
Bedroom Four - 11' 2" x 10' 5" (3.4m x 3.18m)

Bathroom - 8' 4" x 6' 7" (2.55m x 2.0m)

Floor Plan



 Office space area



 Office space area

Additional Information

These particulars are thought to be materially correct though their accuracy is not guaranteed and they do not form part of any contract. All measurements are approximate and we have not tested any fitted appliances, electrical or plumbing installation or central heating systems. Floor plans are for illustration purposes only and their accuracy is not guaranteed.