



## Gorselands Court, Aigburth, Liverpool, L17 0DG

- Bright & Spacious One Bedroom Upper Floor Apartment
- Over 55's Sheltered Accommodation
- Double Bedroom with Fitted Wardrobes
- Visitors Parking & Stunning Communal Gardens
- Highly Sought After Development - Close to Amenities
- Inviting Family Lounge & Substantial Modern Kitchen
- Modern Wet Room Suite
- On Site Restaurant - Communal Lounge - Hobby Room



£135,000  
Leasehold







### **Description**

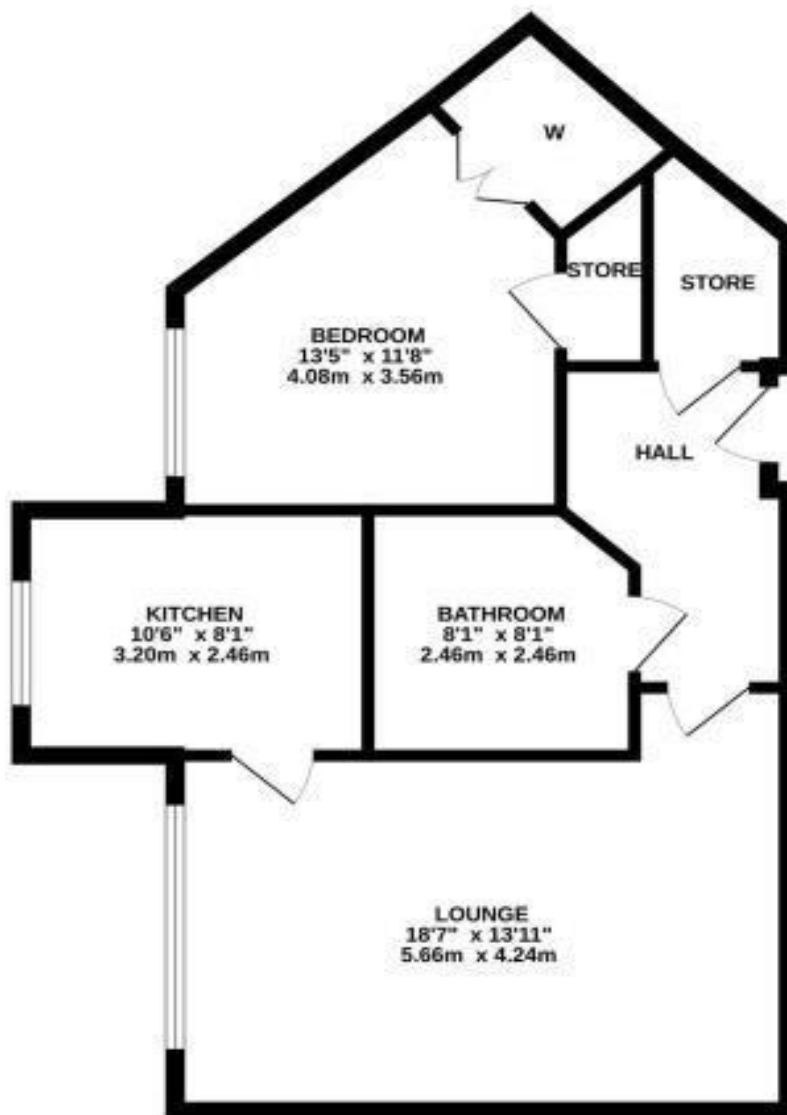
Move Residential is delighted to introduce to the sales market this well presented one bedroom apartment, located within the desirable over 55's Gorselands Court development in Aigburth. L17. Available for sale with no onward chain, Gorselands Court offers additional services including 24 hour on call emergency service, a residents restaurant, hobby room and communal lounge. The apartment itself comprises a welcoming entrance hallway, a bright and spacious family lounge and diner, a substantial modern fitted kitchen, a generously sized and well presented double bedroom with fitted wardrobes and a modern easy access three piece shower room suite. Externally, residents of the development can enjoy access to the beautifully maintained communal grounds. Further benefits include visitor parking, double glazing and gas central heating throughout.

### **Location**

Located in the attractive residential area of Aigburth on the outskirts of Liverpool is Gorselands Court. The landscaped gardens that the court lies within are adjacent to Sefton Park, with historic Sefton Park Palm House just a short walk away. It's a great option for those wanting the peace of a suburb with the city not far away.

## Floor Plan

FIRST FLOOR  
624 sq.ft. (57.9 sq.m.) approx.



RETIREMENT APARTMENT, 21 GORSELANDS COURT  
TOTAL FLOOR AREA : 624 sq.ft. (57.9 sq.m.) approx.  
Made with Metropix 02022

Score	Energy rating	Current	Potential
92+	A		
81-91	B		
69-80	C	80 C	80 C
55-68	D		
39-54	E		
21-38	F		
1-20	G		

#### Additional Information

These particulars are thought to be materially correct though their accuracy is not guaranteed and they do not form part of any contract. All measurements are approximate and we have not tested any fitted appliances, electrical or plumbing installation or central heating systems. Floor plans are for illustration purposes only and their accuracy is not guaranteed.