

Elmdale Road, Orrell Park, Liverpool, L9 2BJ

- Three Bedroom Mid Terrace Property
- Ideal for First Time Buyers & Investors
- Through Lounge & Diner
- Generously Sized Bedrooms & Bathroom
- Available for Sale with No Onward Chain
- Popular Location - Close to Amenities
- Substantial Modern Fitted Kitchen
- Enclosed Yard to the Rear



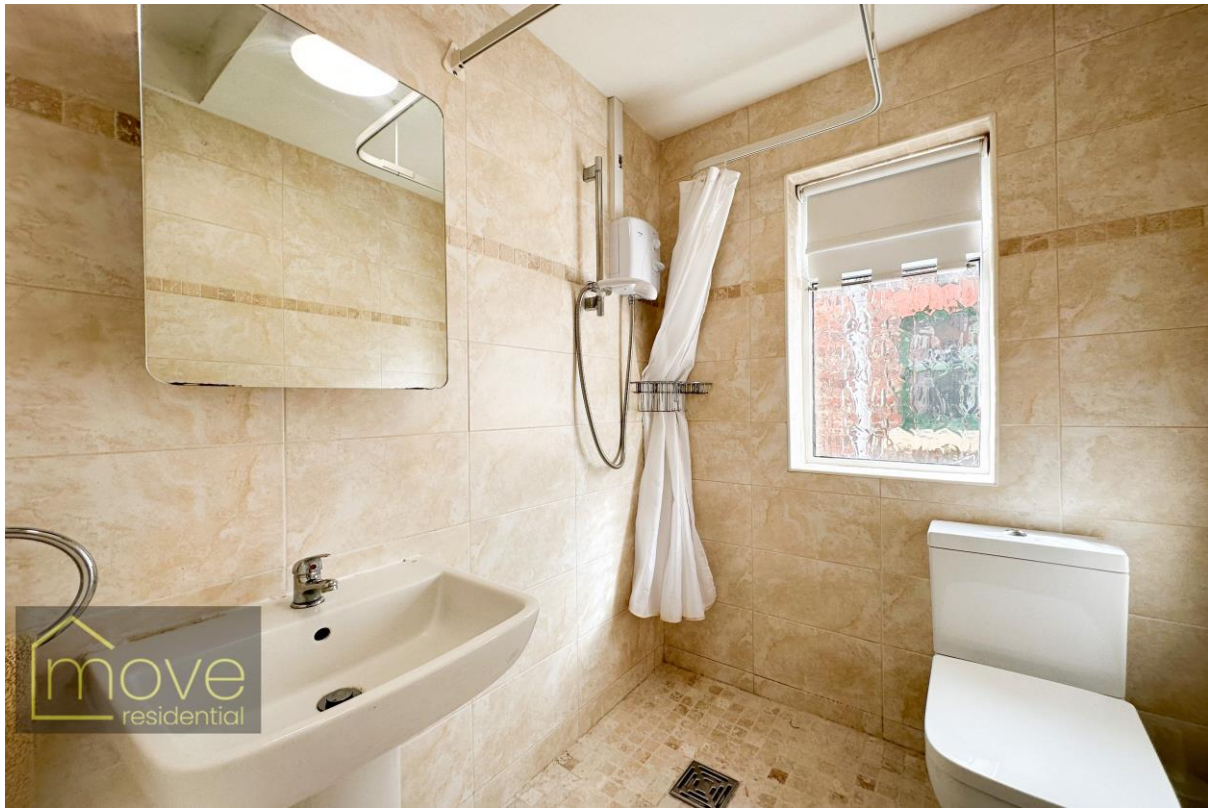
Offers in Excess of £120,000











Description

Available for sale with no onward chain is this fantastic three bedroom mid terrace property, located on Elmdale Road in Orrel Park, L7. An ideal purchase for first time buyers or a buy to let investor, the property is very well maintained and presented throughout, and is generous in size. In brief, the property comprises; a welcoming entrance hallway, a bay fronted through family lounge and diner, a substantial modern fitted kitchen, two generously sized double bedrooms - one of which with custom built fitted wardrobes, a good sized single bedroom and a three piece family bathroom suite. Externally, there is a large enclosed courtyard to the rear elevation. Further benefits to the property include double glazing and gas central heating throughout.

Additional Information

These particulars are thought to be materially correct though their accuracy is not guaranteed and they do not form part of any contract. All measurements are approximate and we have not tested any fitted appliances, electrical or plumbing installation or central heating systems. Floor plans are for illustration purposes only and their accuracy is not guaranteed.