



Ye Priory Court, Woolton, Liverpool, L25 7AY

- Luxurious Two Bedroom Triplex Apartment
- Beautiful Family Lounge Diner & Mezzanine
- Two Generously Sized & Well Presented Bedrooms
- Beautifully Landscaped Grounds
- Set within Stunning Grade II Listed Allerton Priory
- Bespoke Modern Fitted Kitchen
- Two En Suites & Guest WC
- Off Road Parking & Garage



£425,000





















Description

Nestled in the prestigious Ye Priory Court development within the esteemed and private Allerton Priory, this opulent two-bedroom apartment is now available for purchase through the trusted agents, Move Residential. Unmatched in its quality, this splendid residence radiates sophistication, allure, and distinctive character at every turn.

Upon entering the impeccably kept communal entrance brimming with historical charm, you'll be guided to the upper floors where this stunning home is situated. Boasting spacious living quarters spread over three well designed floors, the property is exceptionally well presented throughout and is bursting with charm and character. As you step into the property, you are greeted to a large and inviting entrance hallway which sets the tone for the remainder of the property. The showstopping lounge diner provides an ideal spot for entertaining guests and relaxing with family, and is adorned with an expansive feature stone carved window that floods the room with an abundance of natural light, creating a bright and inviting setting. A remarkable feature of this property is the mezzanine level, cleverly repurposed as an office space, offering an ideal setting for productive work or a cozy reading nook. This additional space adds versatility and creativity to the home.

The bespoke fitted kitchen diner is nothing short of stunning, exuding a tailored design and complete with a range of stylish wall and base units with complementing worktops, a variety of integrated appliances and plentiful work surface space. Completing this level of the property is a convenient WC. Ascending to the upper floor, you will find two expansive and beautifully presented double bedrooms, each benefitting from custom built fitted wardrobes and en suite facilities, providing privacy and luxury to its occupants.

Externally, the property is further enhanced by the show stopping communal grounds which residents can take advantage of, with perfectly manicured lawns and an abundance of established and colourful greenery. For added convenience, there is allocated parking for residents and visitors, as well as a garage offering additional storage space.

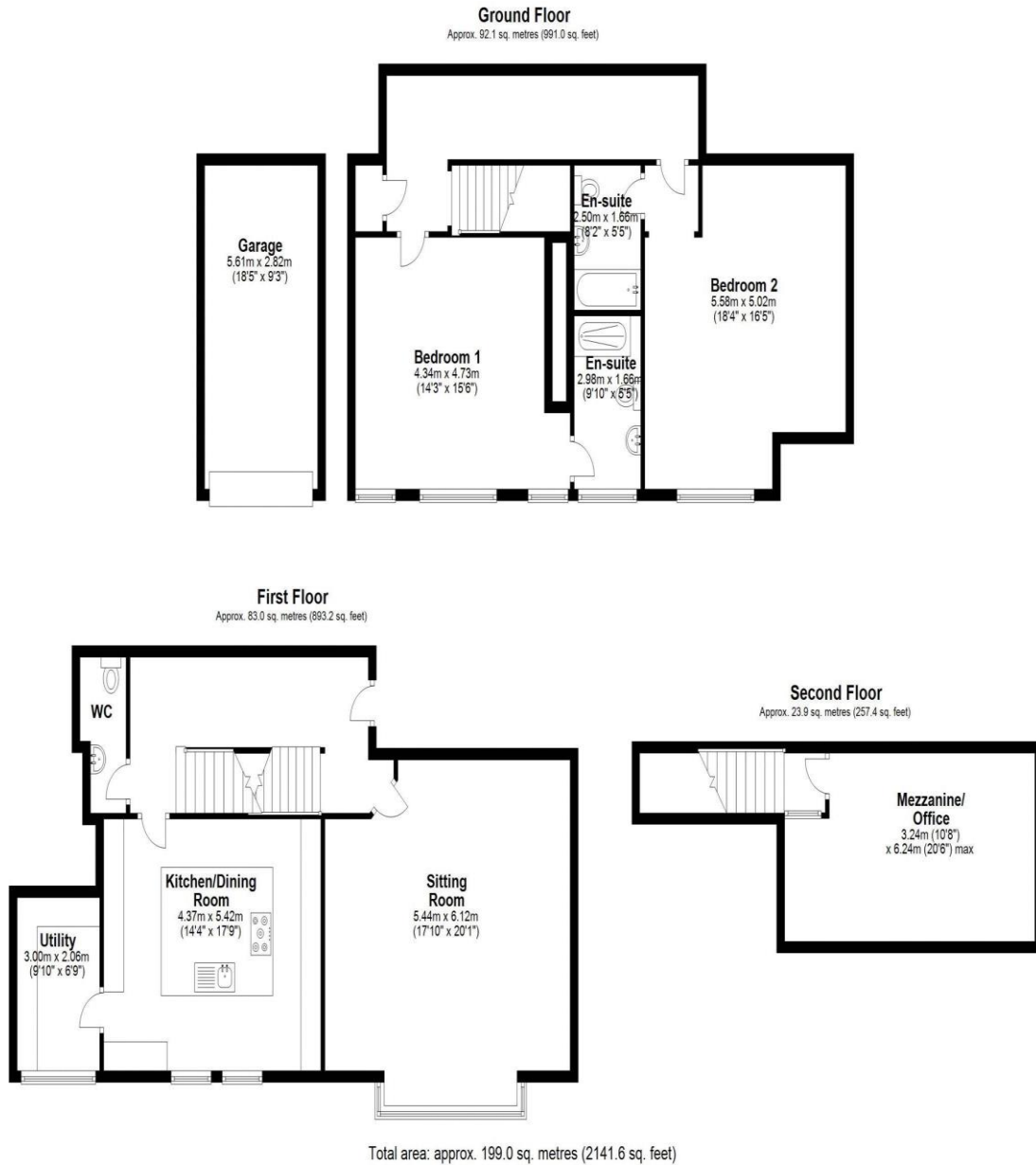
This residence encapsulates not just a living space, but a lifestyle, combining functionality, aesthetics, and comfort into one remarkable home and a viewing is certainly advised to appreciate what this property has to offer.

Location

Ye Priory Court is located on a much coveted stretch of Old Allerton Road. Enjoying private access to Allerton Towers Park and Allerton Manor, the property is also within close walking distance to Calderstones Park which is one of Liverpool's premier green spaces and offers attractions such as the Calderstones Botanic Gardens and the annual Liverpool Tennis Tournament. It is conveniently located for access to a wide and comprehensive range of amenities including established schooling covering all age range and faith groups – such as Liverpool College and Carleton House. Allerton Road and Woolton Village, which are both situated close by offer a range of local and superstore shopping in addition to a fine selection of bars, restaurants, and even public libraries. Road links are offered in the district, bringing Liverpool City Centre and many further districts to within easy reach, Public transport is readily available, with a frequent bus service and rail service departing from Liverpool South Parkway station. National and international travel is provided for at the Liverpool John Lennon Airport.

EPC to follow.

Floor Plan



Additional Information

These particulars are thought to be materially correct though their accuracy is not guaranteed and they do not form part of any contract. All measurements are approximate and we have not tested any fitted appliances, electrical or plumbing installation or central heating systems. Floor plans are for illustration purposes only and their accuracy is not guaranteed.