



Tedburn Close, Belle Vale, Liverpool, L25 3NS

- Lovely Three Bedroom Semi Detached Property
- Through Lounge & Diner
- Three Generously Sized Bedrooms
- Off Road Parking & Rear Garden
- Fantastic Location - Ideal for First Time Buyers
- Substantial Modern Fitted Kitchen
- Ground Floor WC & Family Bathroom
- Double Glazing & Gas Central Heating



Offers Over £170,000











Description

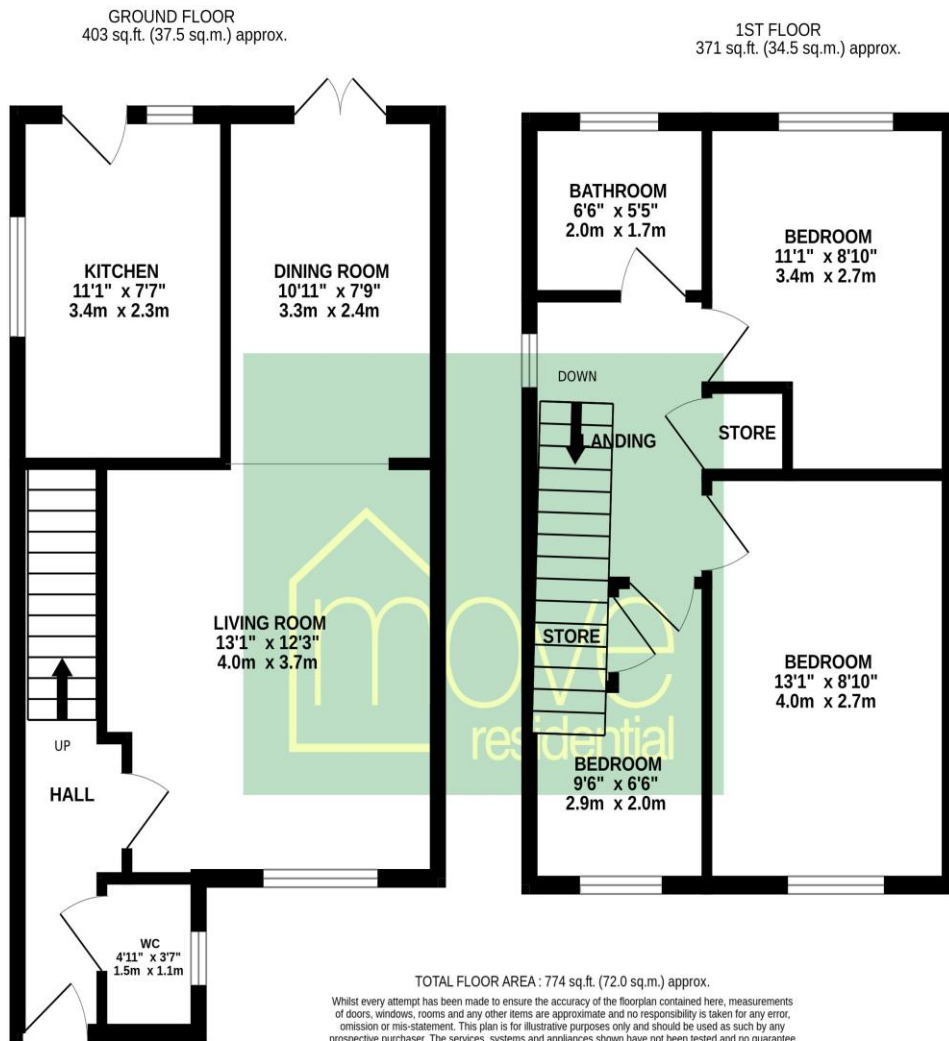
Located on Tedburn Close, a quiet and desirable cul-de-sac located in Belle Vale, L25, is this lovely three bedroom semi detached property, arriving at the sales market courtesy of appointed agents, Move Residential. An ideal purchase for first time buyers looking to get on the property ladder, this spacious and well presented home is ready to move into with no work needed. In brief, the property comprises; a welcoming entrance hallway, a bright and spacious family lounge with feature fireplace which flows seamlessly into a delightful formal dining area with views and access to the lovely rear garden, a substantial fitted kitchen, and a convenient ground floor WC. Ascending to the first floor, you will find two generously sized double bedrooms, a good sized single bedroom and a contemporary style three piece family bathroom suite. Externally, to the front of the property, ample off road parking is provided; whilst to the rear of the property, there is a lovely laid to lawn garden with a patio area. Further benefits include double glazing and gas central heating throughout.

Location

The property is within easy access of local amenities, local schools and recreational facilities; further shopping amenities are available at nearby Gateacre Village and Woolton Village. The property has easy access to local public transport links and major road networks.

EPC

Score	Energy rating	Current	Potential
92+	A		
81-91	B		88 B
69-80	C		
55-68	D	67 D	
39-54	E		
21-38	F		
1-20	G		



Additional Information

These particulars are thought to be materially correct though their accuracy is not guaranteed and they do not form part of any contract. All measurements are approximate and we have not tested any fitted appliances, electrical or plumbing installation or central heating systems. Floor plans are for illustration purposes only and their accuracy is not guaranteed.