

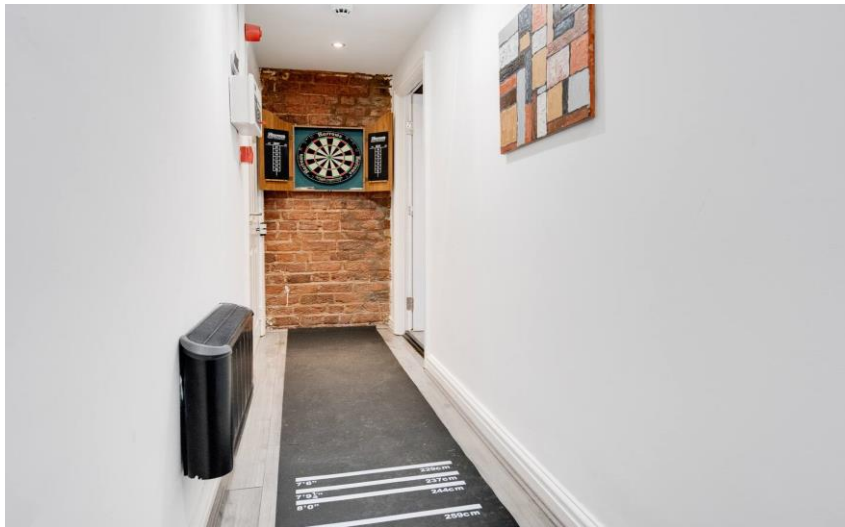


Wavertree Road, Edge Hill, Liverpool L7 1PE

- Two Bedroom Duplex Apartment
- Ideal for Investors or First Time Buyer
- Large Sitting Room
- Family Bathroom Suite
- Popular Residential Location
- Modern Fitted Kitchen Diner
- Two Spacious Bedrooms & Two En Suites
- Very Well Presented Throughout



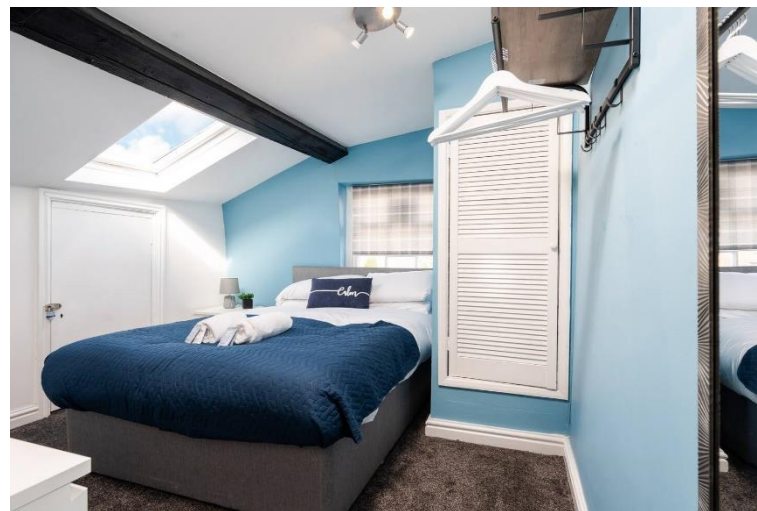
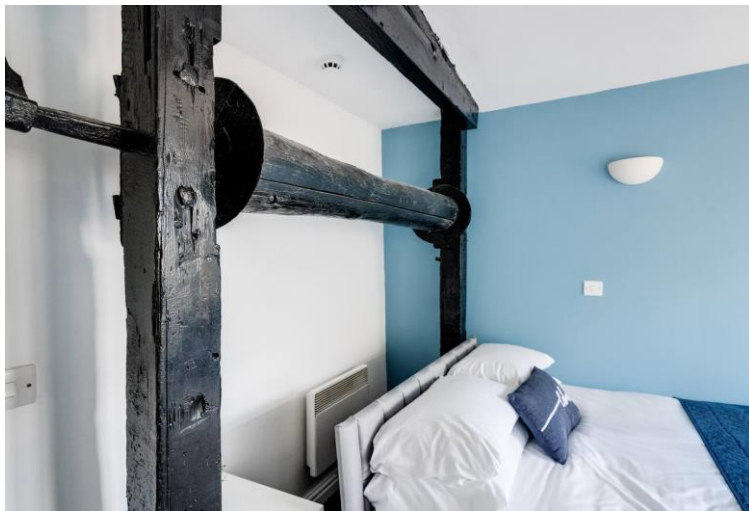
£120,000















Description

Move Residential is pleased to offer for sale this two bedroom duplex apartment, located on Wavertree Road in Edge Hill, L7. An ideal purchase an investor as the property is currently achieving £900pcm, this substantial property briefly comprises; communal entrance, entrance hall, a modern fitted kitchen and diner, a large sitting room, two spacious bedrooms, two en suites and a family bathroom suite. Further benefits to the property include double glazing and gas central heating throughout.

Communal Entrance -

Entrance Hall -

Kitchen Diner - 18' 4" x 15' 10" (5.60m x 4.82m)

Landing -

Lounge - 21' 10" x 14' 11" (6.65m x 4.54m)

En Suite -

Bedroom One - 11' 7" x 10' 7" (3.52m x 3.23m)

En Suite Two-

Bedroom Two - 11' 1" x 9' 7" (3.37m x 2.91m)

Bathroom -

Additional Information

These particulars are thought to be materially correct though their accuracy is not guaranteed and they do not form part of any contract. All measurements are approximate and we have not tested any fitted appliances, electrical or plumbing installation or central heating systems. Floor plans are for illustration purposes only and their accuracy is not guaranteed.