



# Flat 18, Manor Glade Court, Higher Warberry Road, Torquay, Devon, TQ1 1SL

£105,000

🛏 1 🚿 1 🛋 1



- LOVELY VIEWS TOWARDS THE SEA
- OPEN PLAN LOUNGE
- 1 BEDROOM
- ELECTRIC HEATING
- WELL REGARDED AREA
- CONVERTED FLAT
- KITCHEN AREA
- BATHROOM
- DOUBLE GLAZING
- NO ONWARDS CHAIN

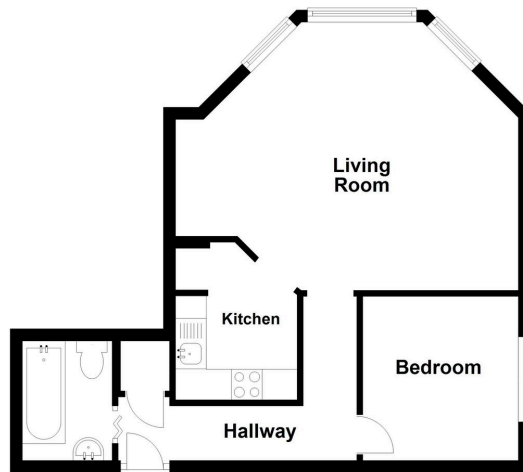




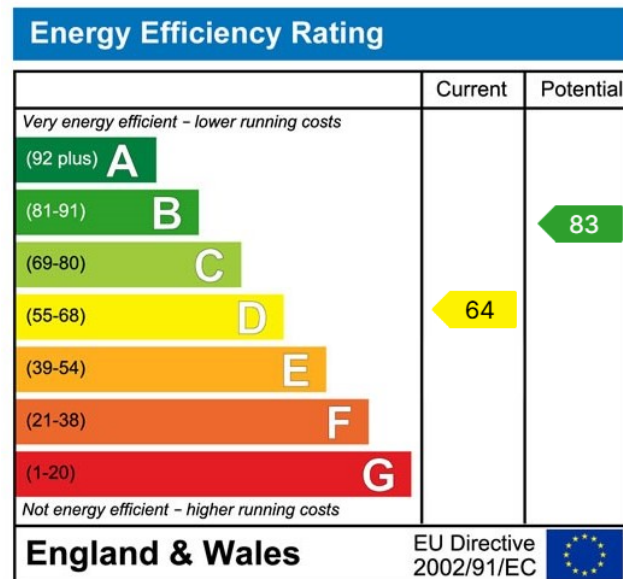
A compact, converted Flat enjoying SEA VIEWS situated in the sought after Warberries area. Ideal for a first time buyer, investment or for someone just looking to downsize. Accommodation briefly comprises; Communal Entrance, open plan Lounge Bedroom with High Ceilings and a Kitchen, Bedrooms and Bathroom. Electric Heating and Double Glazing throughout. NO ONWARDS CHAIN !



18 MANORGLADE COURT



This plan is to be used only as an indication of the floor layout and is not to scale.  
Plan produced using PlanUp.



**OFFICE**  
49 Hyde Road, Paignton,  
Devon, TQ4 5BP  
01803 521111 | [info@propertyladderdevon.com](mailto:info@propertyladderdevon.com)  
[propertyladderdevon.com](http://propertyladderdevon.com)

Agents Note: Whilst every care has been taken to prepare these particulars, they are for guidance purposes only. All measurements are approximate and are for general guidance purposes only and whilst every care has been taken to ensure their accuracy, they should not be relied upon and potential buyers/tenants are advised to recheck the measurements