



64 Beechdown Park, Totnes Road, Paignton, TQ4 7PS
£119,995

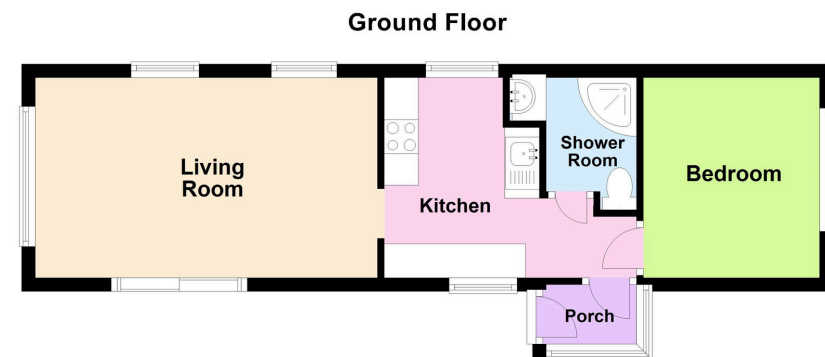
🛏️ 1 🚿 1 🚻 1



- Detached Park Home
- 1 Bedroom
- Kitchen
- UPVC Double Glazing
- Parking
- For the Overs 50's
- Lounge
- Refitted Shower Room
- Lovely Gardens
- View Today



A Residential Park Home situated at popular Beechdown Park for the Over 50's on the outskirts of Paignton, close to bus routes for the South Hams and Torbay. The property benefits from being on the southern side of the park with countryside views and a southerly facing garden. Accommodation briefly comprises; Porch, Kitchen, Living Room, Bedroom and refitted Shower Room. UPVC double glazing. Easy maintenance gardens and Driveway giving off road Parking for 1 car.



This plan is to be used only as an indication of the floor layout and is not to scale.
Plan produced using PlanUp.



OFFICE
49 Hyde Road, Paignton,
Devon, TQ4 5BP
01803 521111 | info@propertyladderdevon.com
propertyladderdevon.com

Agents Note: Whilst every care has been taken to prepare these particulars, they are for guidance purposes only. All measurements are approximate and are for general guidance purposes only and whilst every care has been taken to ensure their accuracy, they should not be relied upon and potential buyers/tenants are advised to recheck the measurements