



12 Woodland Glade , Hoburne Devon Bay Holiday Park, Grange Road, Goodrington, Paignton, Devon, TQ4 7JP

£100,000

🛏 3 🚿 2 🚻 1

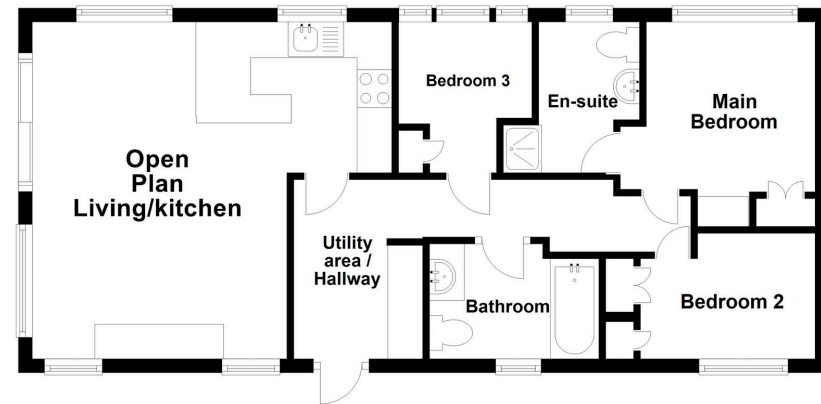


- LUXURY HOLIDAY LODGE
- WELL REGARDED PARK
- GREAT SITE FACILITIES
- 3 DOUBLE BEDROOMS (MASTER EN-SUITE)
- FULLY FITEED KITCHEN
- UTILITY AREA
- CENTRAL HEATING
- DOUBLE GLAZING
- DECKED ENTERTAINING AREA
- PARKING FOR 2 CARS



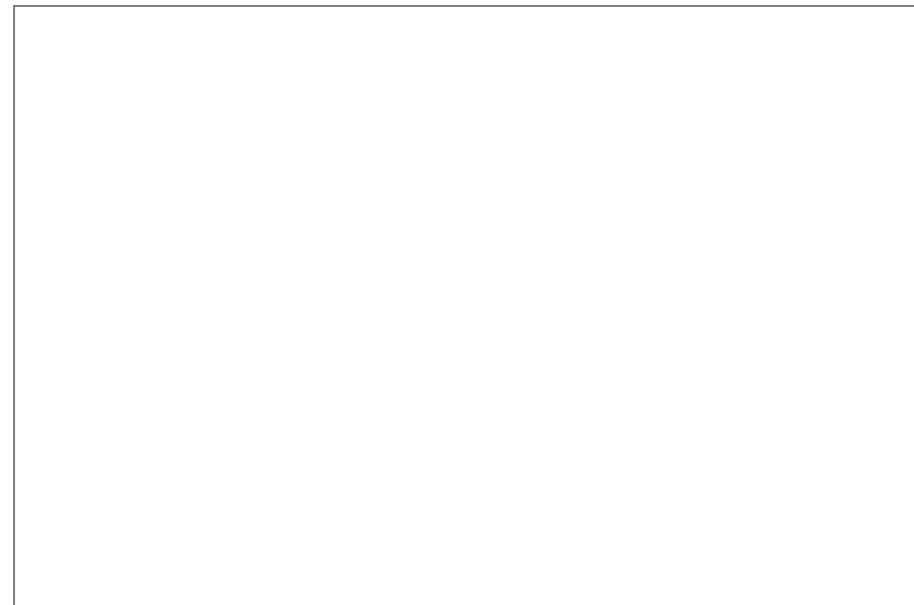


12 Woodland Glade - Hoburne



This plan is to be used only as an indication of the floor layout and is not to scale.
Plan produced using PlanUp.

Luxury Holiday Lodge for Investment or Personal Use comes with the remainder of a 25 Year Lease and is on well-regarded Hobourne - Devon Bay Holiday Park which has excellent facilities. This quality Lodge has 3 Double Bedrooms (Master En-Suite), large Open plan Living space with high quality Fitted Kitchen and further Family Bathroom. Deck for Entertaining and Parking for 2 Cars. Situated in a quiet, secure gated position on this Popular Park. There are outdoor and indoor swimming pools, a fantastic clubhouse/entertainment complex and a Shop. Local beaches are about 15 mins away and a bus service runs from the site into Paignton with the Splashpark and Zoo within easy reach. Ready to use for the oncoming Season simply call us to view.



OFFICE
 49 Hyde Road, Paignton,
 Devon, TQ4 5BP
 01803 521111 | info@propertyladderdevon.com
 propertyladderdevon.com

Agents Note: Whilst every care has been taken to prepare these particulars, they are for guidance purposes only. All measurements are approximate and are for general guidance purposes only and whilst every care has been taken to ensure their accuracy, they should not be relied upon and potential buyers/tenants are advised to recheck the measurements