

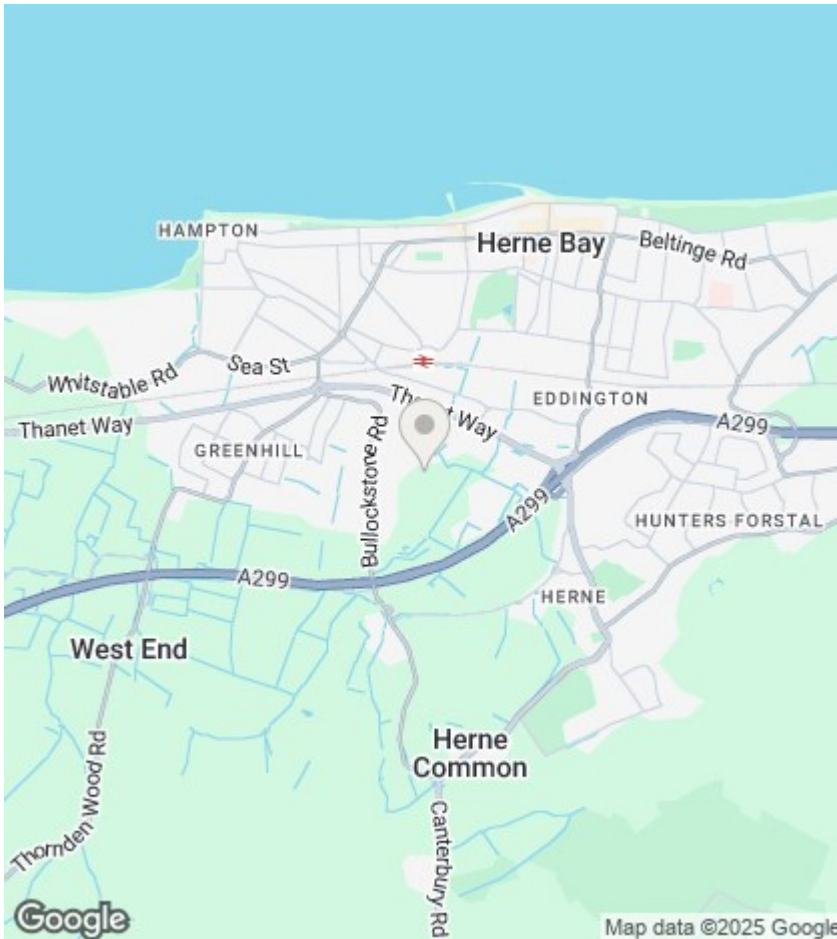
# KE



7 Ambrose Avenue, Herne Bay, Kent, CT6 5SP

£490,000

- Driveway And Garage
- Built by Redrow Homes
- Modern Decor Throughout
- Four Double Bedrooms
- Pretty Enclosed Garden



## Viewings

Viewings by arrangement only. Call 01227 389 998 to make an appointment.

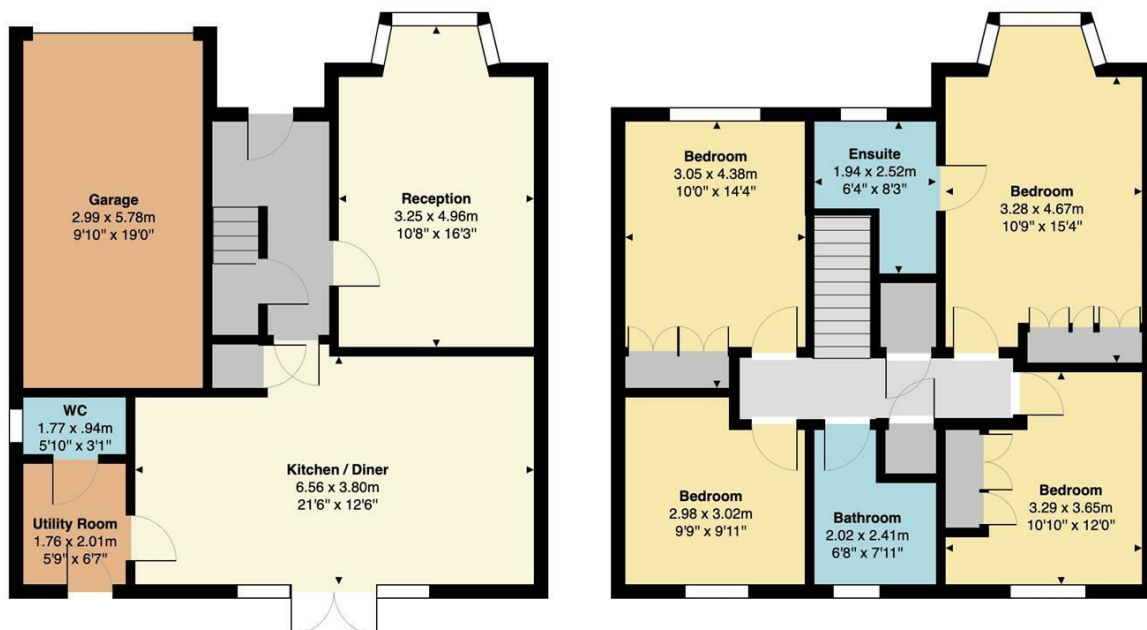
## Council Tax Band:

E

## EPC Rating:

B

Energy Efficiency Rating		
	Current	Potential
Very energy efficient - lower running costs		
(92 plus) A		93
(81-91) B	84	
(69-80) C		
(55-68) D		
(39-54) E		
(21-38) F		
(1-20) G		
Not energy efficient - higher running costs		
England & Wales		EU Directive 2002/91/EC



Total Area: 132.8 m<sup>2</sup> ... 1429 ft<sup>2</sup>

All measurements are approximate and for display purposes only