

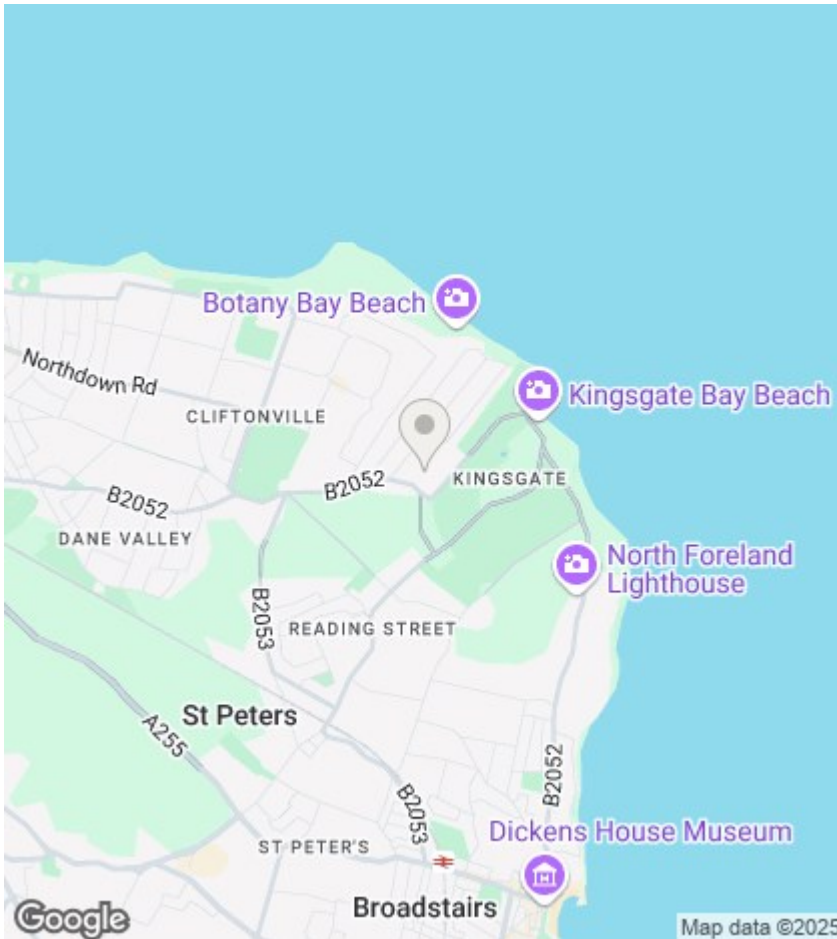
KE



29 Whiteness Green, Broadstairs, Kent, CT10 3JS

£750,000

- Four Spacious Bedrooms With En-Suite To Master
- Close Proximity To The Sea
- Located In A Quiet, Family-Friendly Neighbourhood
- Newly Refurbished Throughout To A High Standard
- Contemporary Open-Plan Kitchen/Dining Area



Viewings

Viewings by arrangement only. Call 01227 389 998 to make an appointment.

Council Tax Band:

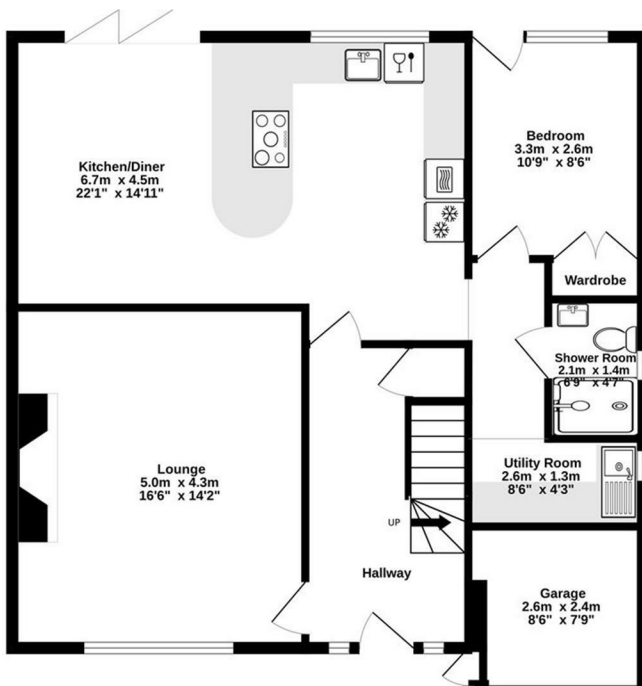
E

EPC Rating:

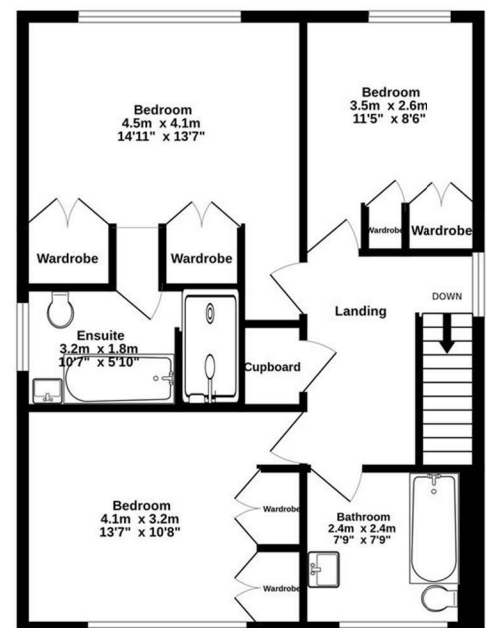
C

Energy Efficiency Rating		
	Current	Potential
Very energy efficient - lower running costs		
(92 plus) A		84
(81-91) B		
(69-80) C	74	
(55-68) D		
(39-54) E		
(21-38) F		
(1-20) G		
Not energy efficient - higher running costs		
England & Wales		
EU Directive 2002/91/EC		

GROUND FLOOR
84.1 sq.m. (905 sq.ft.) approx.



1ST FLOOR
60.3 sq.m. (649 sq.ft.) approx.



TOTAL FLOOR AREA : 144.4 sq.m. (1554 sq.ft.) approx.

The total floor area displayed above does not include any areas highlighted in grey. If present please refer to each highlighted grey section to view its respective area. This plan is for layout guidance only. Not drawn to scale unless stated. Windows and door openings are approximate. Whilst every care is taken in the preparation of this plan, please check all dimensions, shapes and compass bearings before making any decisions reliant upon them.

Made with Metropix ©2025