

FREEHOLD



House - Terraced (EPC Rating: C)

30 COMMONWEALTH DRIVE, CRAWLEY,
RH10 1AE

Price Guide

£425,000



3 Bedroom House - Terraced located in Crawley

Connect UK is proud to welcome this well-presented three-bedroom property to the market on Commonwealth Drive, situated in the sought-after area of Three Bridges, Crawley.

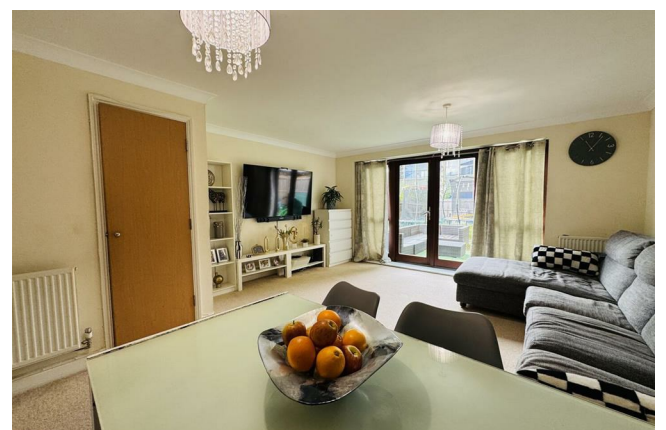
This home offers a perfect blend of space, modern comfort, and convenience—ideal for families, first-time buyers, or investors.

The ground floor features a spacious living room with additional integrated storage, creating a warm and practical space for everyday living. The well-sized kitchen comes complete with integrated appliances, offering a functional area for cooking and dining. A convenient extra toilet on this level adds to the practicality of the property.

Upstairs, you will find three bedrooms, including a generous master bedroom with en-suite WC, a double bedroom, and a single room. A main bathroom with white tiles and a contemporary finish serves the family. There is also ample storage throughout, including a loft.

The property benefits from a good-sized back garden, perfect for entertaining or relaxing, and two allocated parking spaces. Located in a highly convenient area of Commonwealth Drive, the property is within walking distance of local amenities, bus routes, Three Bridges train station, and the town centre.

Offered freehold and with no onward chain, this property is ready to move into and represents a fantastic opportunity to acquire a family home in a popular location.

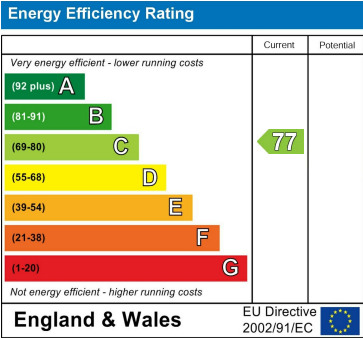


RICHMOND HOUSE - SALES | 105 HIGH STREET, CRAWLEY, WEST SUSSEX, RH10 1DD

Council Tax Band

D

Energy Performance Graph



Call us on

01293529993

louis@connectukgroup.co.uk

Agents Note: Whilst every care has been taken to prepare these particulars, they are for guidance purposes only. All measurements are approximate and are for general guidance purposes only and whilst every care has been taken to ensure their accuracy, they should not be relied upon and potential buyers are advised to recheck the measurements.