

Astley & co



5, Millers Square
Chapel Road
Attleborough

Information

LOCATION LOCATION LOCATION - A stones throw to the town centre. BRAND NEW REFURBISHMENT - New Kitchen Installed with Quartz work-top. Newly Decorated Throughout. New Carpets Laid Throughout. New Flooring. All Artex Removed. End Town House built in 2001 with Four Bedrooms, Master Bedroom with Ensuite arranged over Three Floors, Garage & SOUTH FACING Garden. A modern home is situated in a quiet Cul-de-sac only a few yards from Attleborough High Street and next to Sainsbury's Supermarket. Easy access to the A11. Garden is a blank canvass ready for landscaping. A few small jobs left to do, but ready to go.

Gas Fired Central Heating. Boiler installed in 2017.

Comprising Lounge, Kitchen, Downstairs Cloakroom, First Floor Landing, Three Bedrooms and Family Bathroom, Second Floor Master Bedroom suite with En-suite. Outside; Garage and Enclosed Garden.

Section 21 of the Estate Agents Act 1979 – This is to confirm that this property is owned by an employee of Astley & Co Estate Agents.

Price: Offers in the
Region Of £260,000

5, Millers Square Chapel Road

Attleborough

Price Offers in the Region Of £260,000



Description

Entrance Hall

Door to lounge, stairs to first floor, downstairs cloakroom

Lounge 15' 4" x 11' 9" (4.7m x 3.6m)

Window to front, French doors to dining room, radiator, TV point, hardwood flooring

Kitchen 10' 9" x 6' 6" (3.3m x 2.0m)

Window to rear, a range of base and wall units with stainless steel sink, built-in electric oven and gas hob with extractor over, space and plumbing for washing machine, space for tall fridge freezer, tiled splash backs, open plan to dining area

Dining Room 10' 9" x 8' 2" (3.3m x 2.5m)

French doors to rear garden, radiator, hardwood flooring

Downstairs Cloakroom

Window to rear, hand wash basin, WC, radiator, tiled splash-backs

Landing

Window to front, radiator, doors to bedrooms and family bathroom

Bathroom

Comprising panelled bath with shower over, WC, pedestal hand wash basin, fully tiled walls, radiator

Bedroom 13' 1" x 9' 10" (4m x 3m) Overall

Window to front, radiator, built-in wardrobes

Bedroom 10' 9" x 7' 6" (3.3m x 2.3m)

Window to front, radiator, built-in wardrobes

Bedroom/Study 7' 10" x 7' 2" (2.4m x 2.2m)

Window to front, radiator

Landing

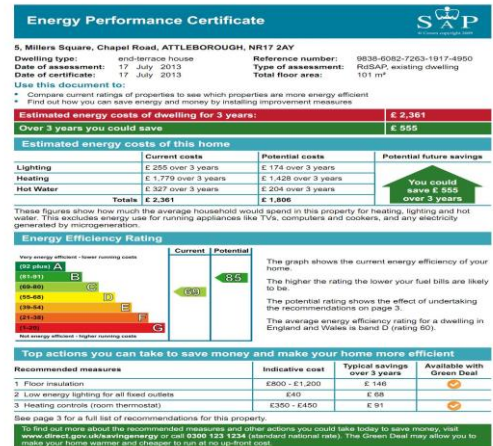
Radiator, storage cupboards, loft access

Master Bedroom 11' 9" x 11' 3" (3.6m x 3.45m)

Window to front x 2, built-in wardrobes, radiator, door to ensuite

Summary of accommodation

- Four Bedroomed End Town House
- Ensuite to Master Bedroom (top floor)
- Family Bathroom & Downstairs Cloakroom
- Newly Refurbished Throughout
- Open Plan Kitchen & Dining Area
- Garage & Ample Off Street Parking
- South Facing Garden



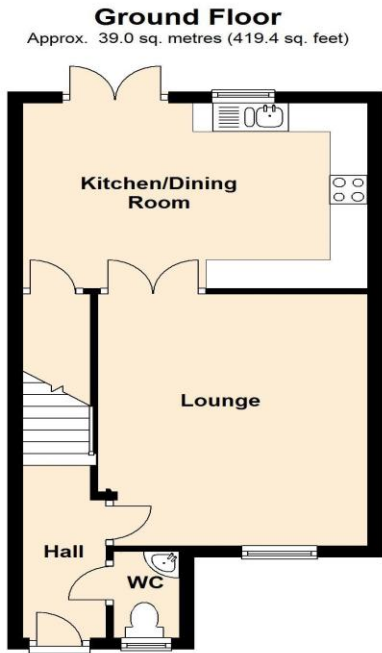
Astley & Co Estate Agents

Email: yvonne@astleyandco.com

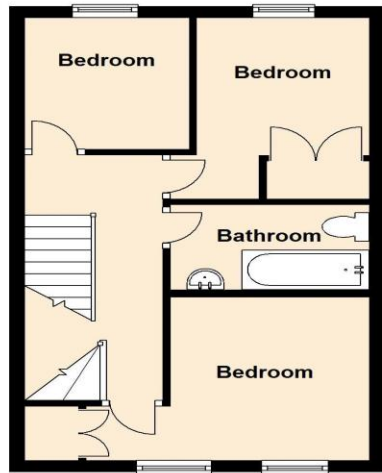
Website: www.astleyandco.com

Tel: 01603 415182

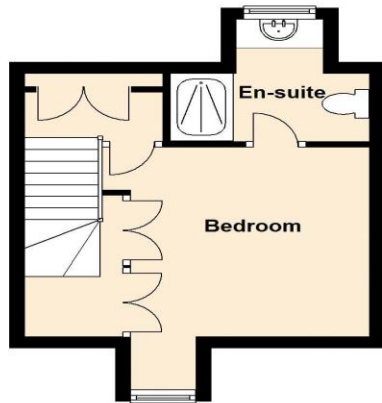
Fax:



First Floor
Approx. 35.5 sq. metres (382.6 sq. feet)



Second Floor
Approx. 23.1 sq. metres (248.5 sq. feet)



Total area: approx. 97.6 sq. metres (1050.6 sq. feet)

