



Stoneacre
Properties



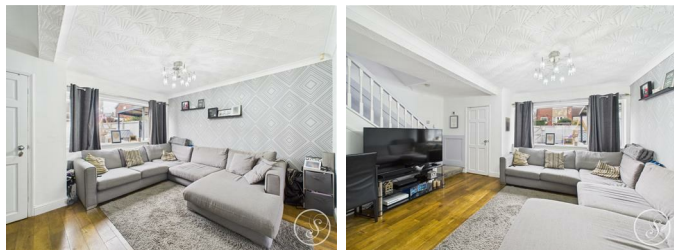
Nettleton Court,, Leeds,, LS15 9AW
£225,000

Offered to the market is this well presented three bedroom end terrace house located on Nettleton Court, Leeds. This property is situated in a sought after location close to all local amenities including: shops, schools and transport links. The property briefly comprises of: entrance, lounge, kitchen/diner, first floor landing, three bedrooms and family bathroom, Externally the property benefits from enclosed low maintenance front garden. Patio to the rear. This property is not one to be missed to arrange your viewing please contact the office today.

ENTRANCE/UTILITY AREA

Door to front. Space for dryer.

LOUNGE



Double glazed window to the front elevation. Central heating radiator. Understair storage.

KITCHEN/DINER

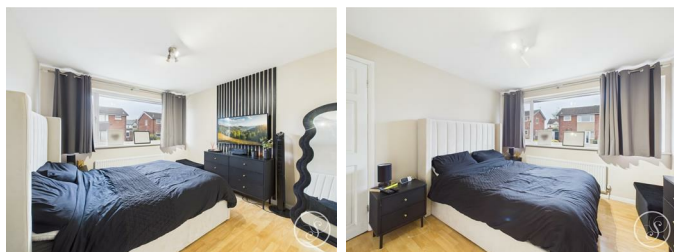


Range of wall and base units. Integrated oven with induction hob and extractor fan above. Integrated microwave. Integrated fridge/freezer. Plumbing for washing machine. Door to the rear elevation. Central heating radiator. Double glazed window to the rear. Space for dining table and chairs.

FIRST FLOOR LANDING

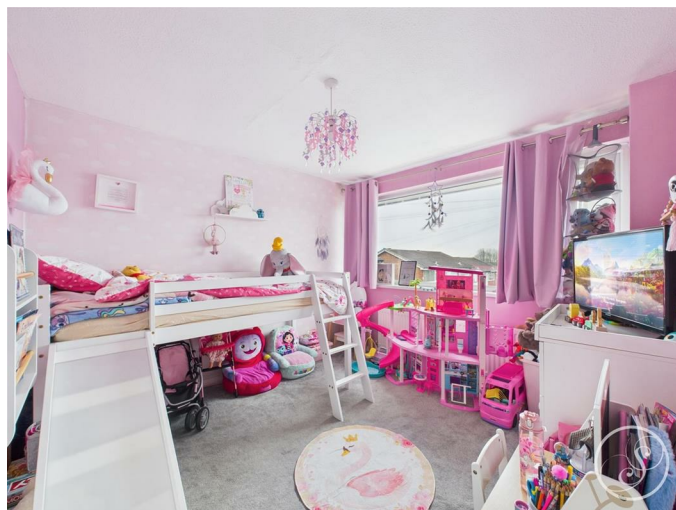
Loft access.

BEDROOM ONE



Double glazed window to the front elevation. Central heating radiator. Storage cupboard.

BEDROOM TWO



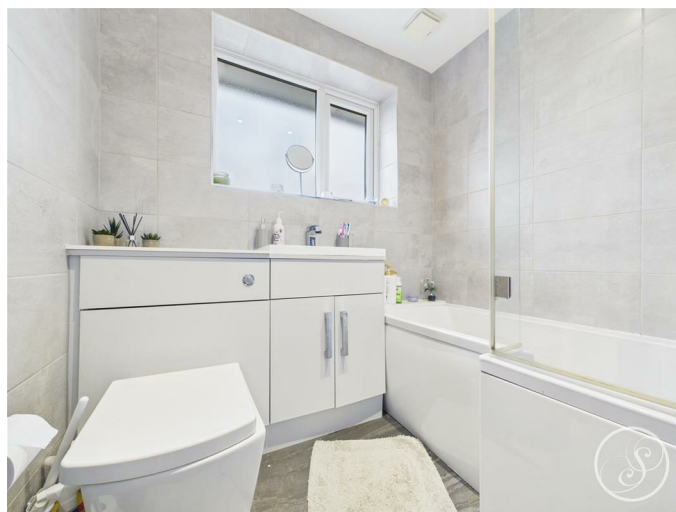
Double glazed window to the rear elevation. Central heating radiator. Storage cupboard.

BEDROOM THREE



Double glazed window to the front elevation.

BATHROOM



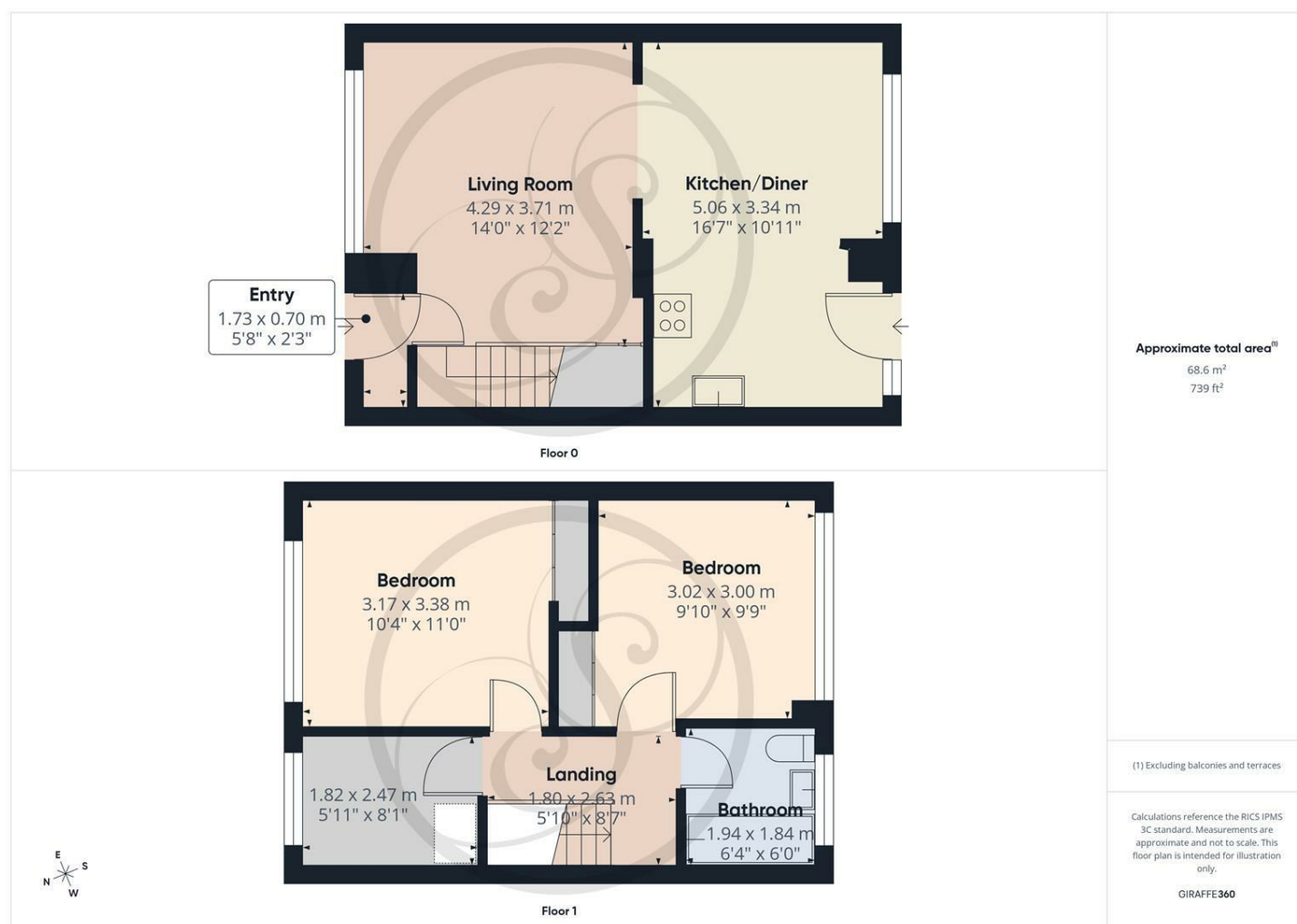
Double glazed frosted window to the rear elevation. Low flush w.c. Wash hand basin. Bath with shower above. Heated towel rail.

EXTERNAL

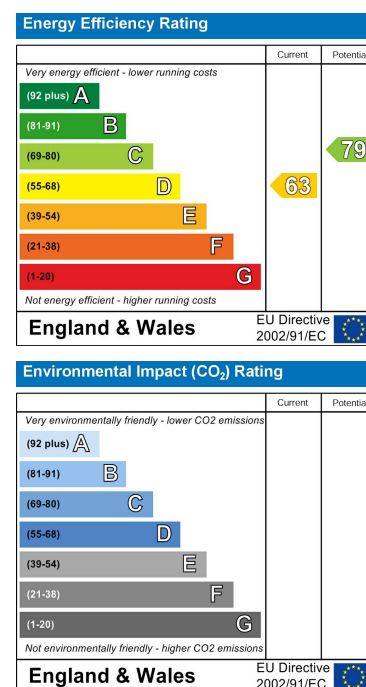
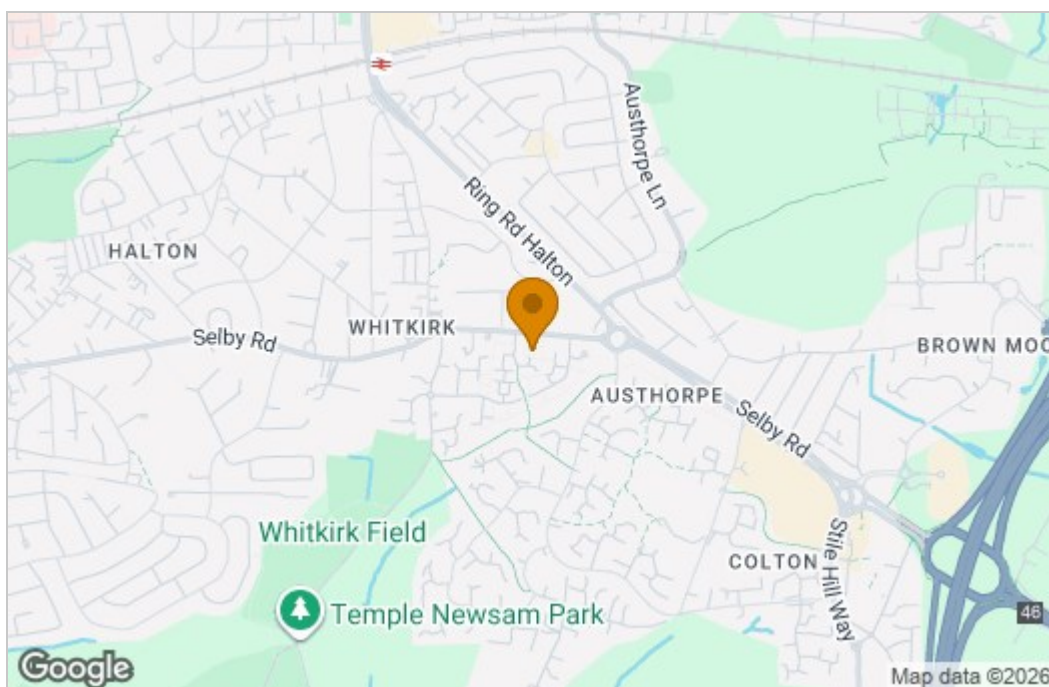


Enclosed patio area to the rear. Artificial grass to the front elevation.

Floor Plan



Area Map



These particulars, whilst believed to be accurate are set out as a general outline only for guidance and do not constitute any part of an offer or contract. Intending purchasers should not rely on them as statements of representation of fact, but must satisfy themselves by inspection or otherwise as to their accuracy. No person in this firm's employment has the authority to make or give any representation or warranty in respect of the property.

1 Colton Road, Leeds, West Yorkshire, LS15 9AA
Tel: 0113 260 9111 Email:
east@stoneacreproperties.co.uk <https://www.stoneacreproperties.co.uk>

View properties before they come on the market by following us on Instagram - @stoneacreproperties

