



Stoneacre
Properties



Templegate Close, Leeds, LS15 0PJ
£350,000

Situated on Templegate Close is this impressive detached bungalow that offers a perfect blend of comfort and potential. With three well-proportioned bedrooms, this property is ideal for a range of buyers. The spacious layout includes a welcoming lounge, a delightful kitchen/diner, and a sunroom that invites natural light, creating a warm and inviting atmosphere throughout. One of the standout features of this bungalow is the large loft space, which presents an exciting opportunity for further development, subject to planning consent. This additional space could be transformed to suit your individual needs. The property also boasts a convenient garage and a utility area, providing ample storage and practicality for everyday living. The driveway offers off-street parking, ensuring ease of access for you and your guests. Set in a popular location, this bungalow is one not to be missed.

Entrance Hall

Door to the front elevation.

Lounge



Double glazed window to the front. Central heating radiator. Gas fire with surround.

Kitchen/Diner



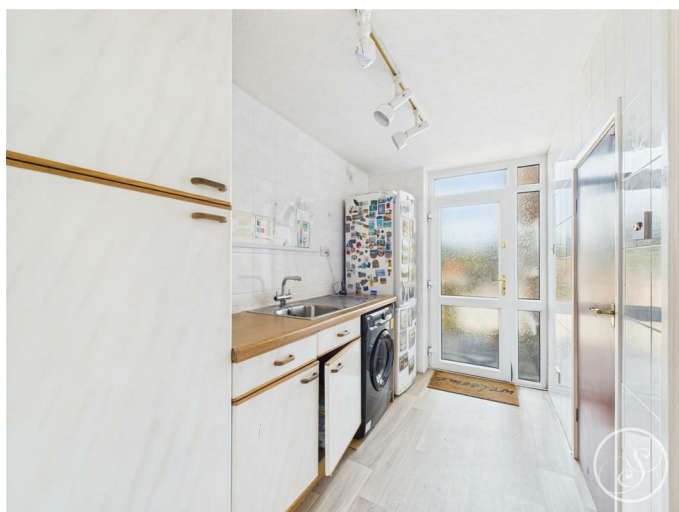
A range of wall and base units. Sink and drainer. Electric hob. Double glazed window to the rear of the property. Central heating radiator.

Sun Room



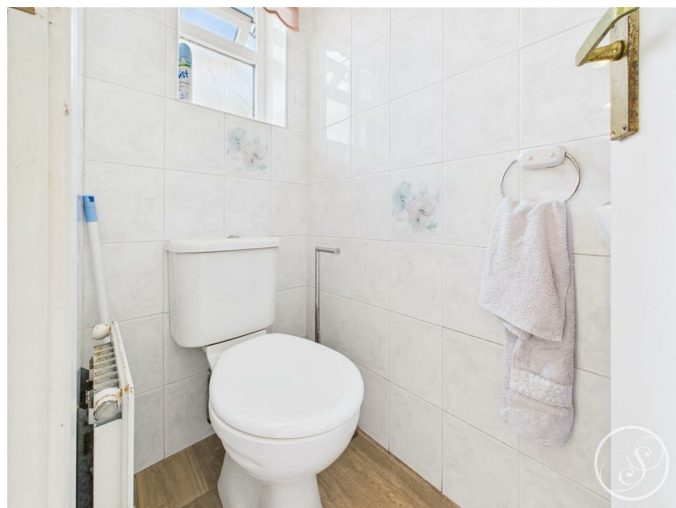
Double glazed sliding doors to the rear of the property. Four double glazed windows to the side and rear elevation. Central heating radiator.

Utility Area



Cupboard space. Sink and drainer. Plumbing for washing machine. Stairs leading to loft space.

Guest WC



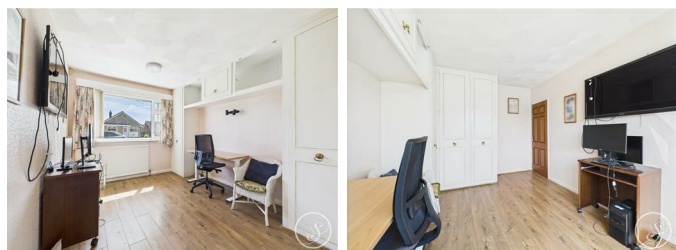
Low flush w/c with hand basin.

Bedroom One



Fitted wardrobes. Double glazed window. Central heating radiator.

Bedroom Two



Fitted wardrobes. Central heating radiator. Double glazed window.

Bedroom Three



Built in wardrobe. Central heating radiator. Double glazed window.

Wet Room



Wet room with a shower, wash hand basin and wc. In addition there is a heated towel rail and two double glazed windows.

Large Loft Space

Large loft space that has a staircase leading up to it. This would be a great space for additional accommodation subject to planning consents being obtained. Ideal office space with a double glazed window that offers views across the city, power, light and internet connection.

External



To the front and rear are well maintained gardens. There is also a drive that offers parking.

Garage

To the front is an electric door.

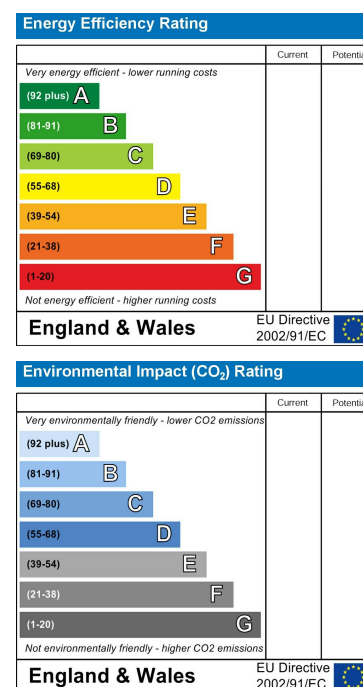
Floor Plan



Area Map



Energy Efficiency Graph



These particulars, whilst believed to be accurate are set out as a general outline only for guidance and do not constitute any part of an offer or contract. Intending purchasers should not rely on them as statements of representation of fact, but must satisfy themselves by inspection or otherwise as to their accuracy. No person in this firm's employment has the authority to make or give any representation or warranty in respect of the property.

1 Colton Road, Leeds, West Yorkshire, LS15 9AA
Tel: 0113 260 9111 Email:
east@stoneacreproperties.co.uk <https://www.stoneacreproperties.co.uk>

View properties before they come on the market by following us on Instagram - @stoneacreproperties

