



Stoneacre
Properties



Field End Court, Leeds, LS15 0PY

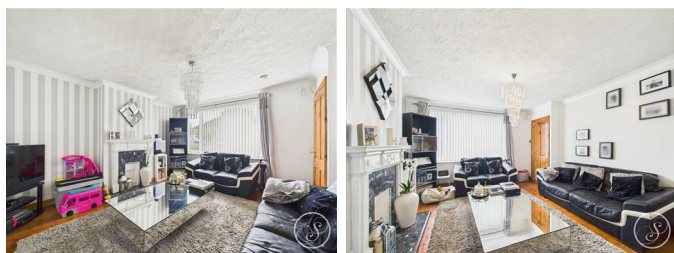
£230,000

This is an ideal opportunity for a first time buyer or investor. This spacious home is located in a popular area and offers spacious accommodation throughout. Situated on Field End Court this home is close to many local amenities including transport links and schools. Comprising: entrance, lounge, dining area, kitchen, three bedrooms and a bathroom. Externally there are gardens to the front and rear and a garage in a close by block. Early viewings are highly recommended.

ENTRANCE HALL WAY

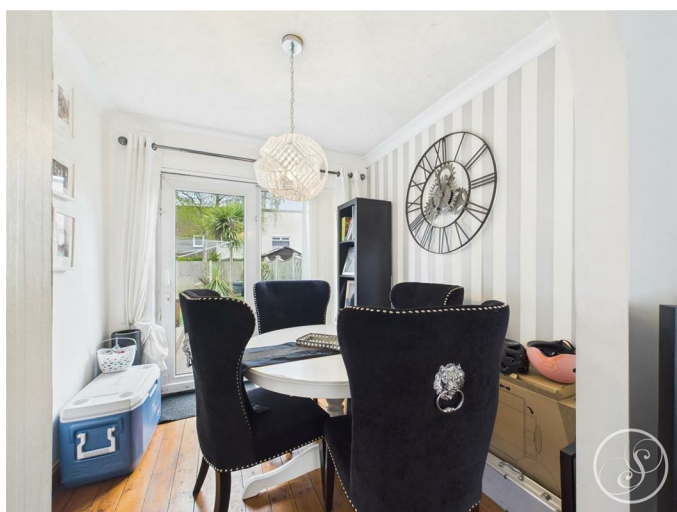
Door to front. Central heating radiator. Staircase leading to first floor.

LOUNGE



Window to front. Central heating radiator. Access into dining area.

DINING AREA



Door leading out to the rear garden. Central heating radiator.

KITCHEN

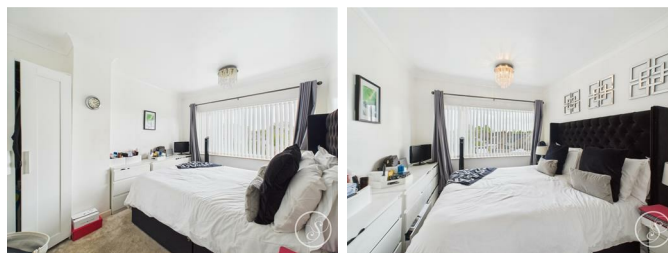


fitted with a range of wall and base units with work surfaces over incorporating a sink and drainer unit. Electric oven and hob with cooker hood over. Plumbing for dishwasher. Pantry with plumbing for washing machine. Window to rear.

FLOOR FLOOR LANDING

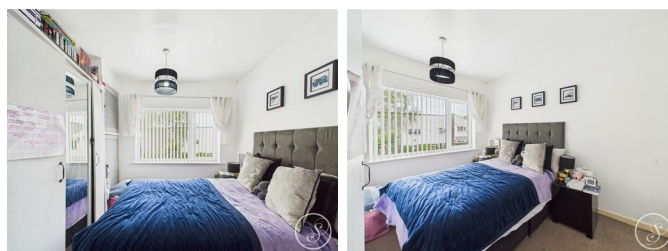
Access into loft.

BEDROOM ONE



Window. central heating radiator.

BEDROOM TWO



Window. Central heating radiator.

BEDROOM THREE



Window. Central heating radiator.

BATHROOM



Fitted with a bath with shower over, wash hand basin and wc. In addition there is a central heating radiator and a window.

EXTERNAL



Gardens to the front and rear.

GARAGE

Situated in a close by block. Up and over door.

Floor Plan

