



**Stoneacre**  
Properties



**High Bank View, Leeds, LS15 9DG**  
**Offers In The Region Of £325,000**

This beautiful extended bungalow has recently been updated throughout and offers an opportunity to purchase a bungalow that is spacious and modern. This lovely home is situated in Colton village and so has access to many local amenities and motorway links. Comprising: entrance hall, open plan kitchen/diner, living space, two bedrooms and a shower room. Externally the property has a beautiful garden and a garage. Early viewings are highly recommended.



## ENTRANCE HALL WAY

Door to the front elevation.

## DINING ROOM



Open plan dining room, living room and kitchen. Central heating radiator.

## KITCHEN



Double glazed window to the front elevation. Base units. Sink and drainer Gas cooker and hob with extractor fan above. Integrated fridge freezer, washing machine and dishwasher.

## LOUNGE



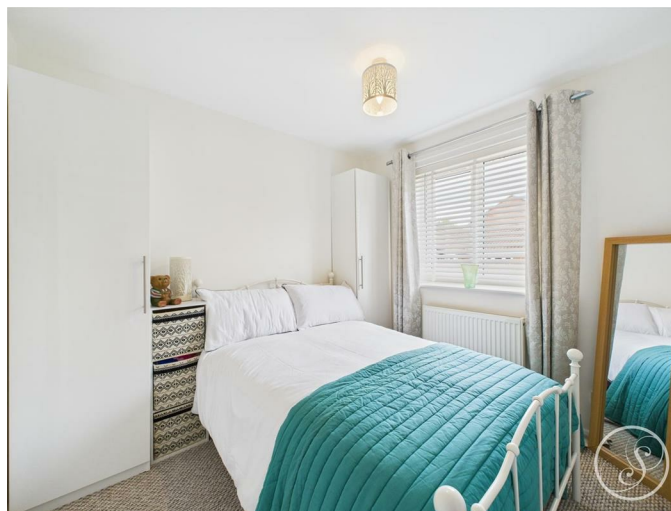
Three double glazed windows to the rear elevation. Double glazed French doors leading to the rear garden. Central heating radiator.

## BEDROOM ONE



Double glazed window to the rear. Built in wardrobes. Central heating radiator.

## BEDROOM TWO



Double glazed window to the front elevation. Fitted wardrobes Central heating radiator.

## BATHROOM



Double glazed window to the front. Shower cubicle with electric shower. Low flush w.c. Wash hand basin with storage below. Heated towel rail.

## GARAGE

Up and over door. Power and lights.

## EXTERNAL

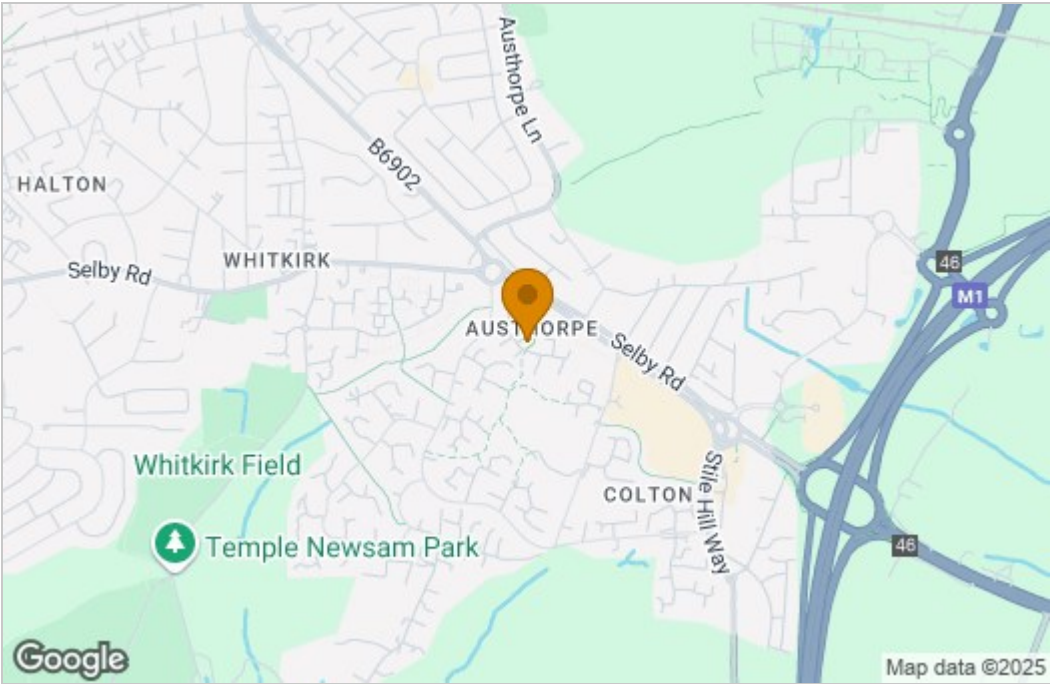


Garden to the rear of the property. Decking area. Paved area. Driveway to the front of the property with garage.

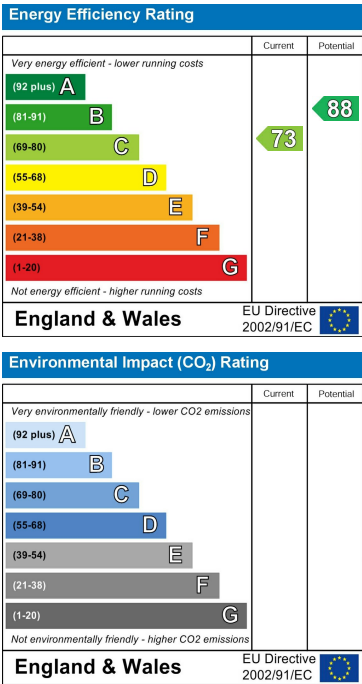
Floor Plan



Area Map



Energy Efficiency Graph



These particulars, whilst believed to be accurate are set out as a general outline only for guidance and do not constitute any part of an offer or contract. Intending purchasers should not rely on them as statements of representation of fact, but must satisfy themselves by inspection or otherwise as to their accuracy. No person in this firm's employment has the authority to make or give any representation or warranty in respect of the property.

