



**Stoneacre**  
Properties



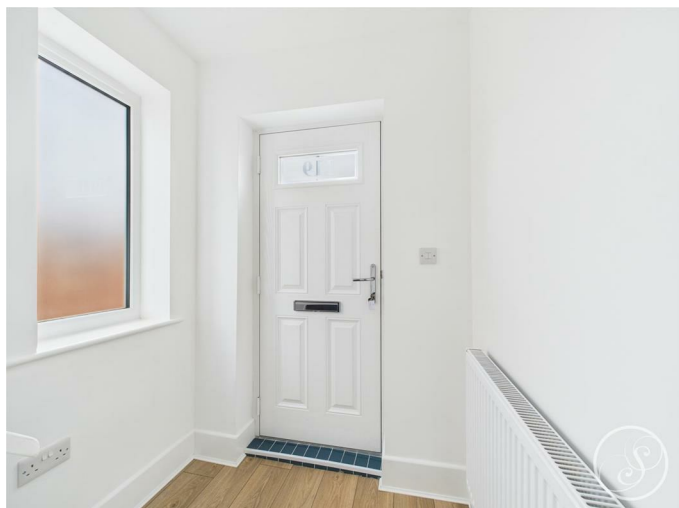
**Selby Road, Leeds, LS15 7JG**

**£235,000**

Stoneacre Properties are delighted to offer for sale this beautiful recently refurbished three bedroom semi detached family home. The property has recently benefitted from a full upgrade offering ready to move into accommodation. Comprising: entrance hall, lounge, kitchen/diner, rear porch, three bedrooms and a bathroom. This delightful home on Selby Road boasts great access links into Leeds City Centre.

Viewings are highly recommended.

## ENTRANCE HALL WAY



Door to the front. Double glazed window to the side elevation. Central heating radiator. Stairs leading to first floor accommodation.

## LOUNGE



Double glazed window to the front. Central heating radiator.

## KITCHEN/DINER



A range of wall and base units. Electric cooker and hob with extractor fan above. Space for fridge/freezer, plumbing for washing machine and dishwasher. Central heating radiator. Storage cupboard.

## FIRST FLOOR LANDING

Double glazed window to the side elevation. Loft access. Doors off giving access to bedrooms and bathroom.

## BEDROOM ONE



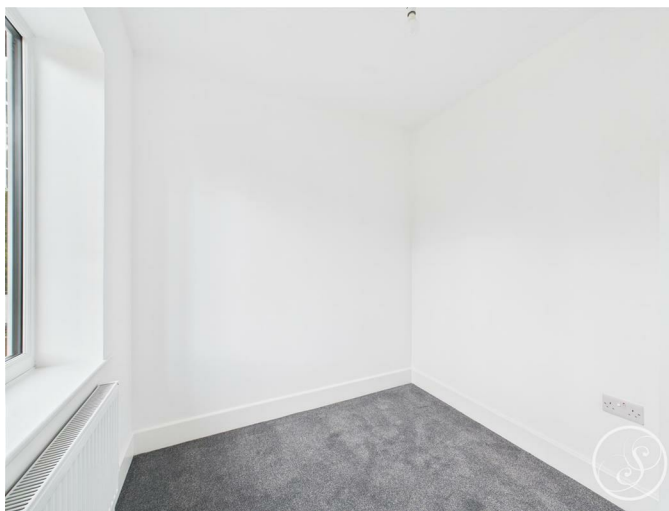
Double glazed window to the front elevation. Central heating radiator.

## BEDROOM TWO



Double glazed window to the rear. Central heating radiator.

## BEDROOM THREE



Double glazed window to the rear elevation. Central heating radiator.

## BATHROOM



Fitted with a low flush w.c, wash hand basin, bath with shower over. Heated towel rail.

## EXTERNAL

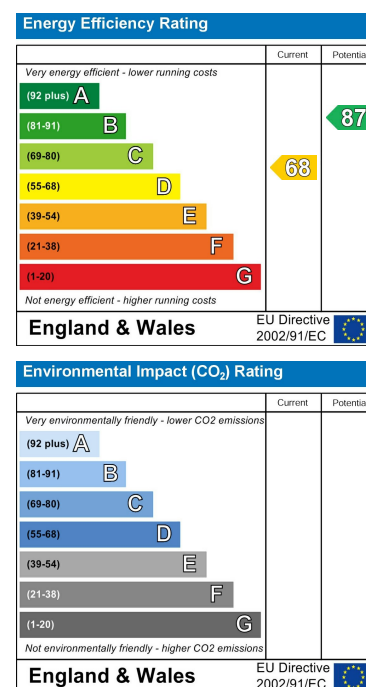
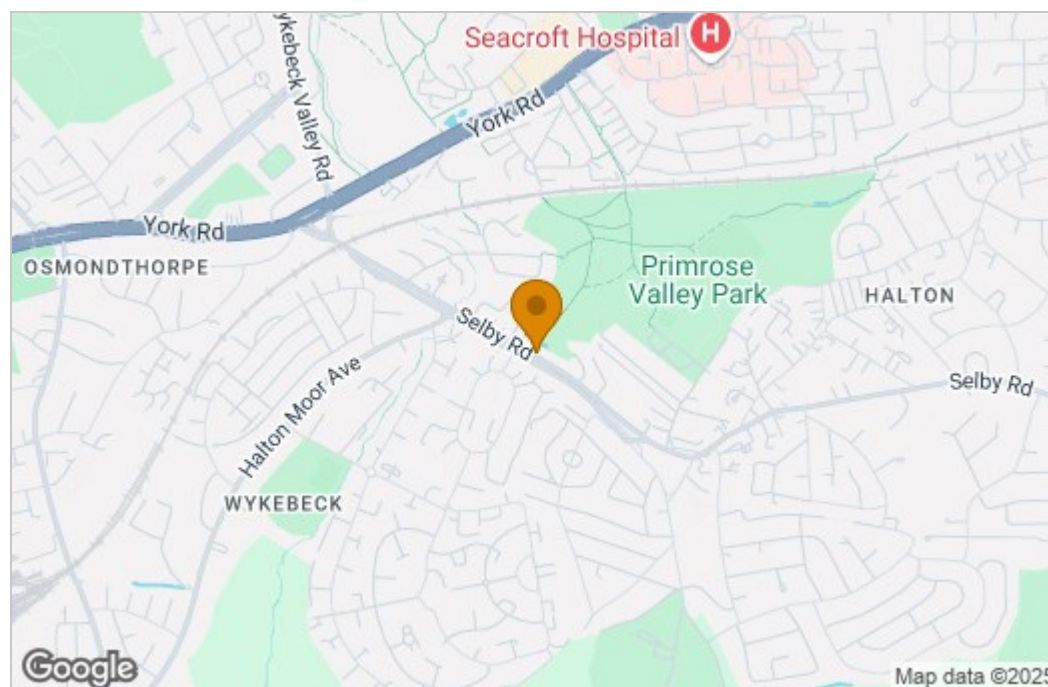




## Floor Plan



## Area Map



These particulars, whilst believed to be accurate are set out as a general outline only for guidance and do not constitute any part of an offer or contract. Intending purchasers should not rely on them as statements of representation of fact, but must satisfy themselves by inspection or otherwise as to their accuracy. No person in this firm's employment has the authority to make or give any representation or warranty in respect of the property.

1 Colton Road, Leeds, West Yorkshire, LS15 9AA  
Tel: 0113 260 9111 Email:  
east@stoneacreproperties.co.uk <https://www.stoneacreproperties.co.uk>

**View properties before they come on the market by following us on Instagram - @stoneacreproperties**

