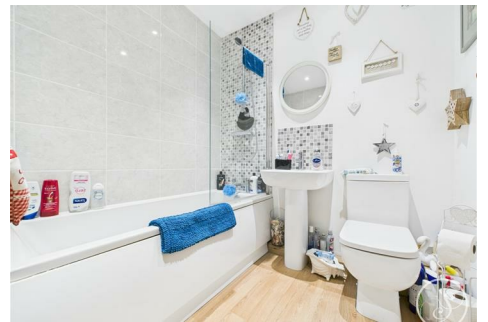




Stoneacre
Properties



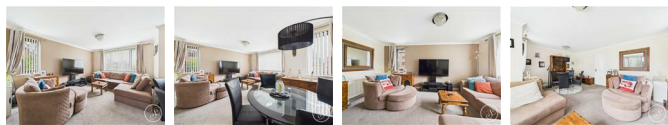
Church View Court, Leeds, LS15 7BA
£180,000

Offered for sale is this stunning GROUND FLOOR TWO BEDROOM APARTMENT located in a sought after area just outside of Crossgates town centre. Ideally located with local amenities, schools and local transport nearby. Ideal first time purchase or investment property. Comprising of; entrance hallway, kitchen, lounge diner, two bedrooms and a bathroom. Externally the property has communal gardens and designated parking space plus further visitor parking spaces. Viewings are highly recommended while the property is still available.

ENTRANCE HALLWAY

Spacious hallway with storage cupboard. Central heating radiator. Access into the bedrooms, lounge, kitchen and bathroom.

LOUNGE DINER



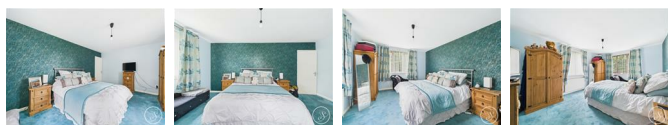
Open lounge diner with double glazed windows to the front and side. Central heating radiators. Space for dining room table.

KITCHEN



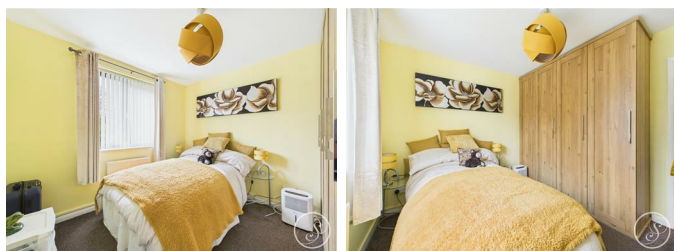
Fitted with wall and base units with integrated electric oven. Space for a fridge freezer. Plumbing for a washing machine. Double glazed window to the front.

BEDROOM ONE



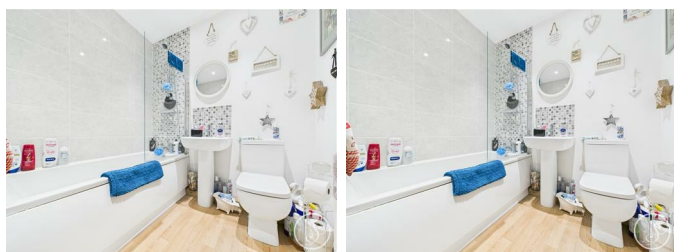
Double bedroom. Double glazed windows. Central heating radiator.

BEDROOM TWO



Fitted wardrobes. Double windows to the rear. Central heating radiator.

BATHROOM



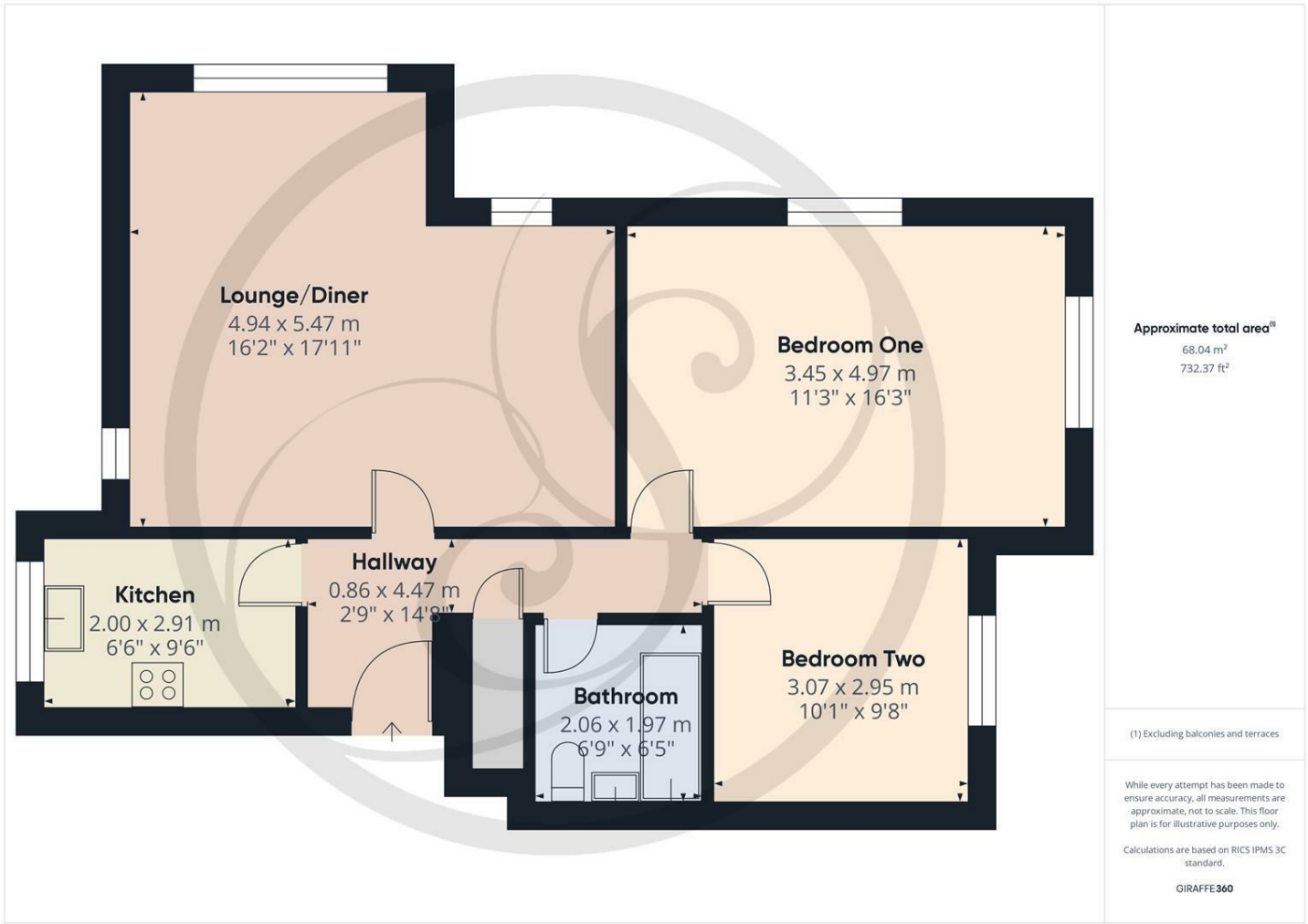
Comprising of a bath with hand held shower above, wash hand basin and wc. Central heating radiator.

EXTERNAL

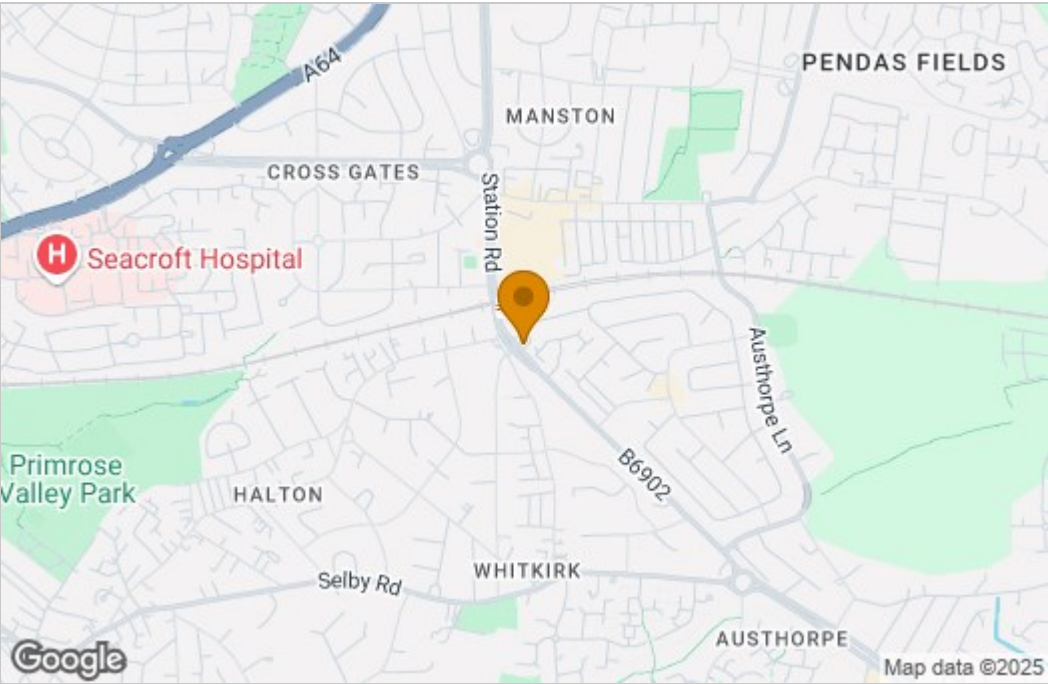


Designated parking spot and further visitor parking spots. Communal gardens.

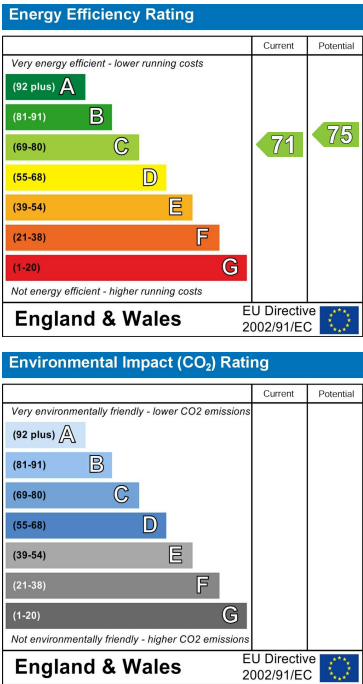
Floor Plan



Area Map



Energy Efficiency Graph



These particulars, whilst believed to be accurate are set out as a general outline only for guidance and do not constitute any part of an offer or contract. Intending purchasers should not rely on them as statements of representation of fact, but must satisfy themselves by inspection or otherwise as to their accuracy. No person in this firm's employment has the authority to make or give any representation or warranty in respect of the property.

