



Stoneacre
Properties

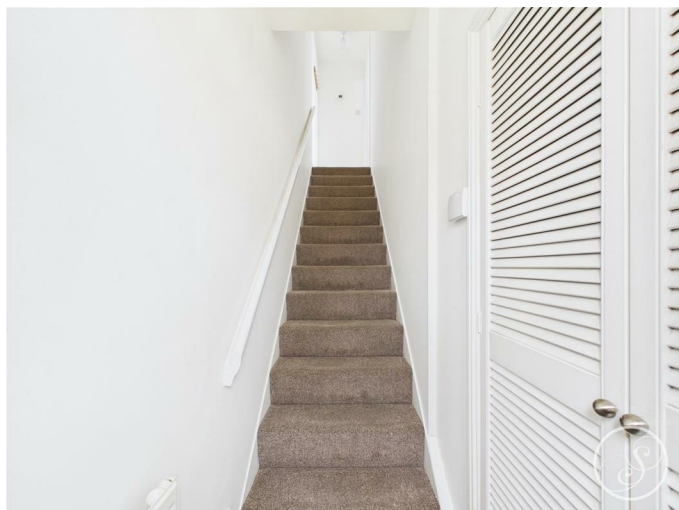


Field End Road, Leeds, LS15 0QP

£154,995

This beautifully presented first-floor flat offers a perfect blend of comfort and modern living. With two well-proportioned bedrooms, this property is ideal for professionals, couples, or small families seeking a welcoming home in a popular area. As you enter, you are greeted by a spacious lounge/diner that provides an inviting space for relaxation and entertaining. The room is filled with natural light, creating a warm and airy atmosphere. The modern kitchen is thoughtfully designed offering a great space for preparing meals. The flat also boasts a stylish bathroom, ensuring that your daily routines are both convenient and enjoyable. Additionally, the property comes with an allocated parking space, a valuable asset in this sought-after location. Field End Road is close to excellent amenities, making it a fantastic choice. This charming two-bedroom flat on Field End Road is a rare find, combining modern comforts with a prime location. Do not miss the chance to make this delightful property your new home.

Entrance



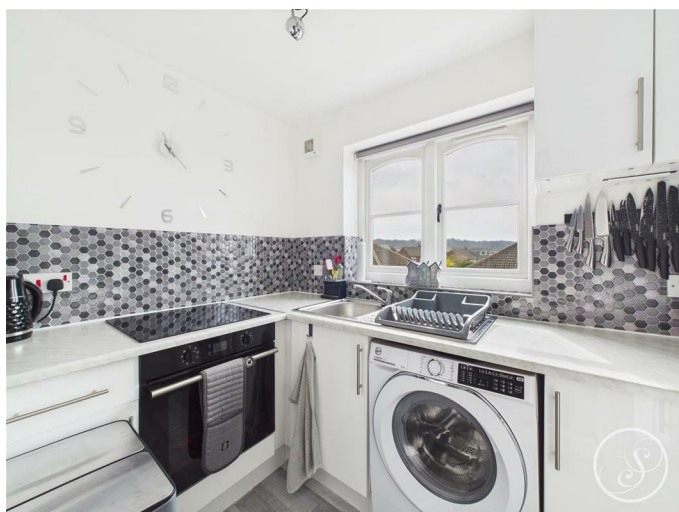
Door to front. Staircase leading to accommodation. Storage cupboard.

Lounge/Diner



Double glazed windows allowing ample light. Central heating radiator. Space for dining table.

Kitchen

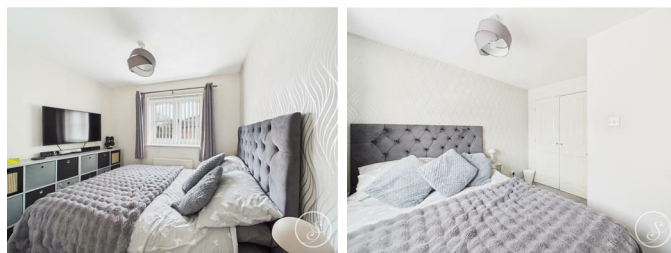


Fitted with a range of wall and base units with work surfaces over incorporating a sink and drainer unit. Electric oven and hob. Plumbing for automatic washing machine. Space for fridge/freezer. Double glazed window.

Inner Hall

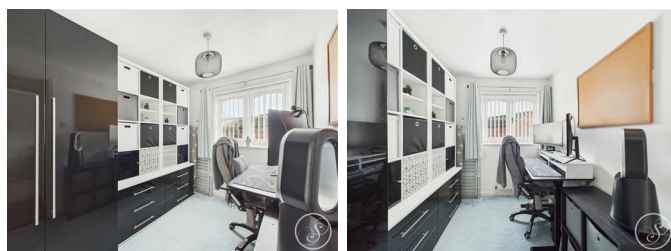
Access into a part boarded loft. Central heating radiator.

Bedroom One



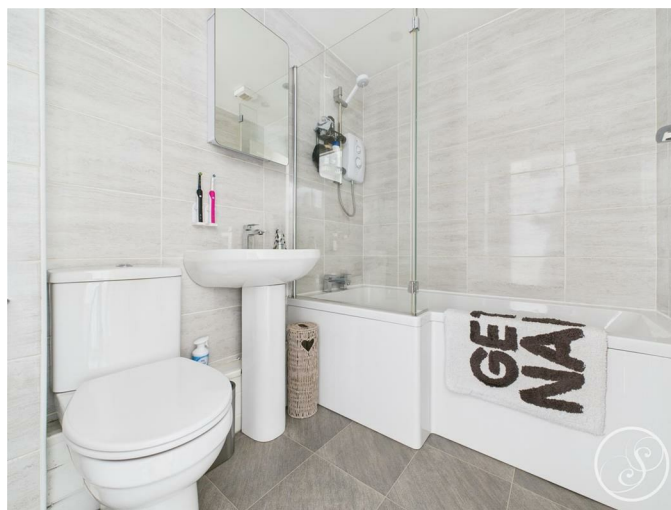
Double glazed window. Central heating radiator. Built in wardrobes.

Bedroom Two



Double glazed window. Central heating radiator.

Bathroom



Fitted with a modern white suite comprising bath with shower over, wash hand basin and wc.

External

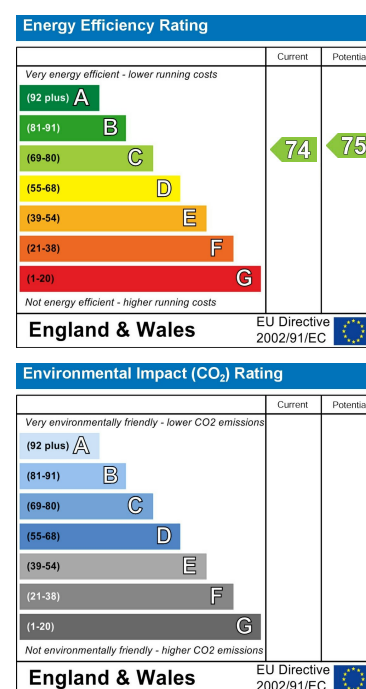
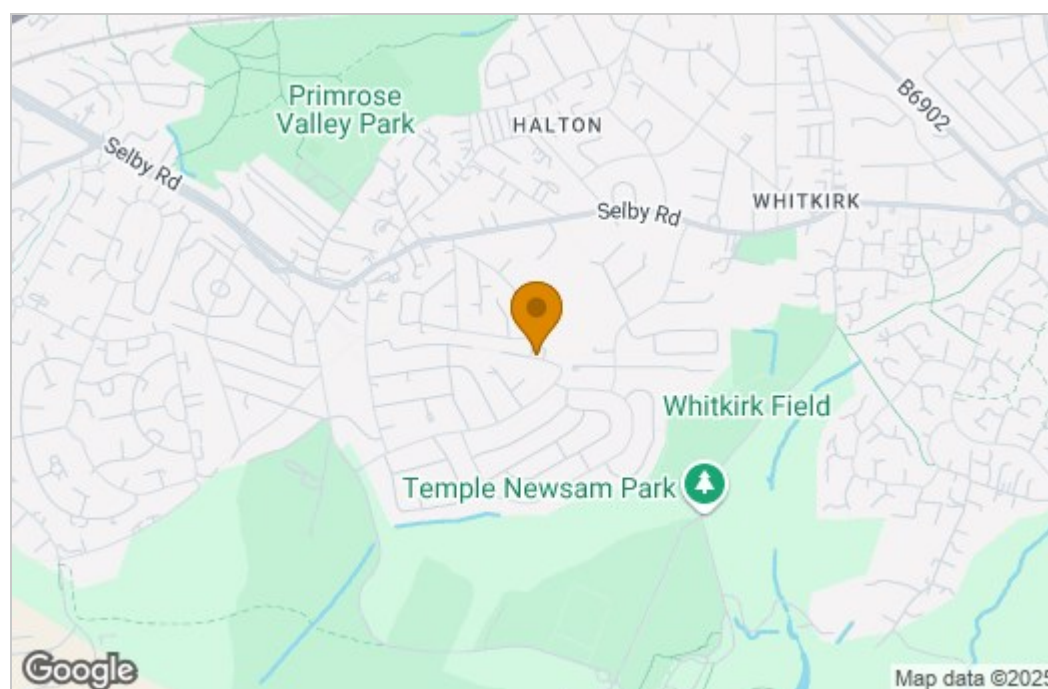


Externally this property boasts beautiful communal gardens and an allocated parking space.

Floor Plan



Area Map



These particulars, whilst believed to be accurate are set out as a general outline only for guidance and do not constitute any part of an offer or contract. Intending purchasers should not rely on them as statements of representation of fact, but must satisfy themselves by inspection or otherwise as to their accuracy. No person in this firm's employment has the authority to make or give any representation or warranty in respect of the property.

1 Colton Road, Leeds, West Yorkshire, LS15 9AA
Tel: 0113 260 9111 Email:
east@stoneacreproperties.co.uk <https://www.stoneacreproperties.co.uk>

View properties before they come on the market by following us on Instagram - @stoneacreproperties

