



Stoneacre
Properties



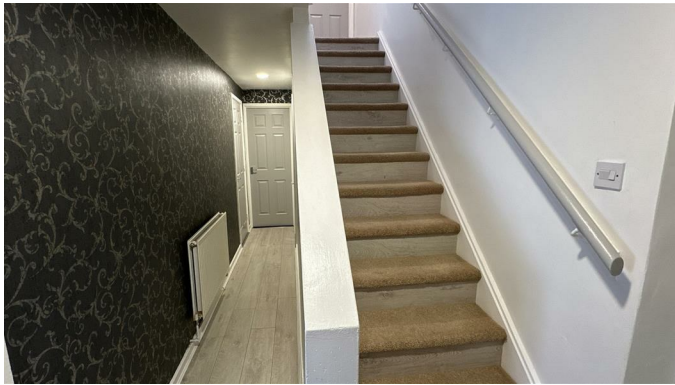
Temple View Grove, Leeds, LS9 9LH
Offers In The Region Of £210,000

Offered for sale this well presented FOUR BEDROOM MID TERRACE offering a ready to move into home ideal for first time buyers and/or investors. Situated in a sought after area with transport links via York Road leading to Leeds City Centre, local amenities and schools nearby. This property offers something for everyone. Comprising to the ground floor an; entrance porch, inner hallway, lounge, kitchen diner, downstairs wet room. To the first floor are; four bedrooms and a bathroom. Externally the property consists of easy to maintain court yards to the front and rear. Viewings are highly recommended to appreciate all this property has to offer. For further information please contact the office 0113 260 9111.

Entrance Porch

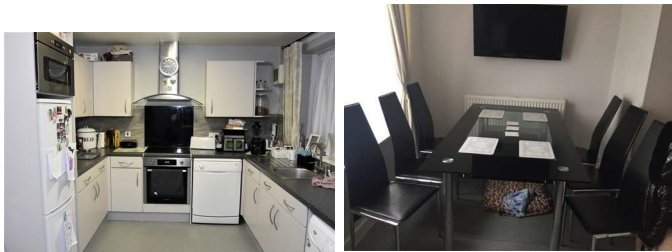
Door to the side and rear to enter the property. Window to the side.

Inner Hallway



Door to the front. Stairs to first floor accommodation. Central heating radiator.

Kitchen Diner



Comprising of a range of wall and base units with integrated electric oven with cooker hood above. Plumbing for a washing machine and dishwasher. Space for a fridge freezer, dryer and microwave. Windows to the rear. Doors to the rear. Space for dining table.

Lounge



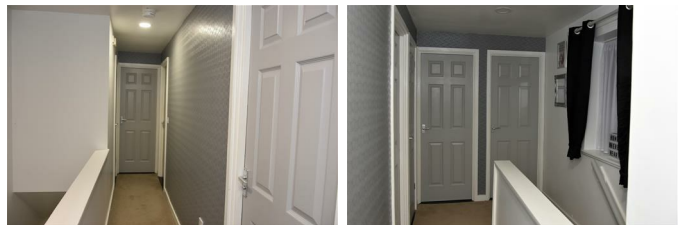
Spacious lounge with window to the rear. Central heating radiator.

Downstairs Wet Room



Comprising of a hand held shower, wc, bidet and wash hand basin. Heated towel rail. Window to the front.

First Floor Landing



Window to the side. Access into bedrooms and bathroom. Storage cupboard.

Bedroom One



Double bedroom with fitted wardrobes. Window to the front. Central heating radiator.

Bedroom Two



Double bedroom with fitted wardrobes. Window to the front. Central heating radiator.

Bedroom Three



Double bedroom. Window to the front. Central heating radiator.

Bedroom Four



Window to the front. Central heating radiator.

Bathroom



Comprising of a bath with hand held shower above, wc and wash hand basin. Heated towel rail. Window to the rear.

External



Externally the property has easy to maintain court yards to the front and rear.

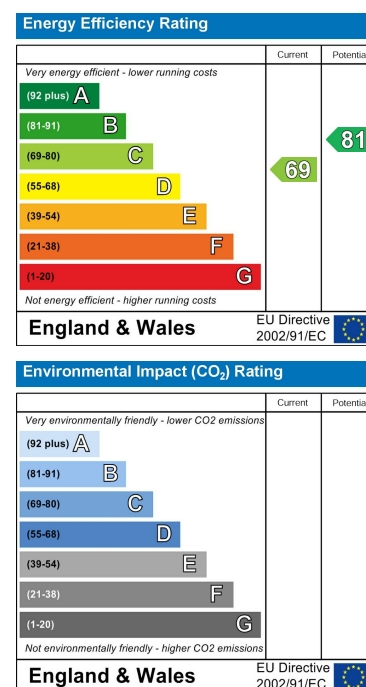
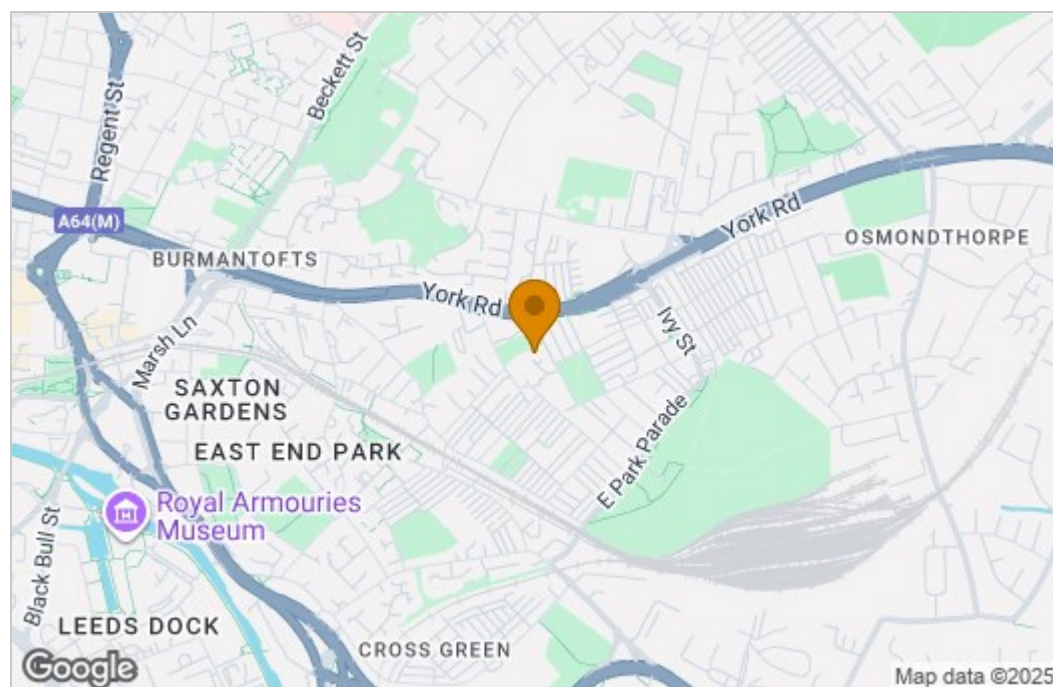
Agent Note

We have been advised by the owner that the whole property lighting is less than 150watts and is fitted with a Modern Eco Boiler. Decorated throughout with brand new doors.

Floor Plan



Area Map



These particulars, whilst believed to be accurate are set out as a general outline only for guidance and do not constitute any part of an offer or contract. Intending purchasers should not rely on them as statements of representation of fact, but must satisfy themselves by inspection or otherwise as to their accuracy. No person in this firm's employment has the authority to make or give any representation or warranty in respect of the property.

1 Colton Road, Leeds, West Yorkshire, LS15 9AA
Tel: 0113 260 9111 Email:
east@stoneacreproperties.co.uk <https://www.stoneacreproperties.co.uk>

View properties before they come on the market by following us on Instagram - @stoneacreproperties

