



Stoneacre
Properties



Templegate Road, Leeds, LS15 0HE

£415,000

Situated on Templegate Road is this charming bungalow offering a perfect blend of space and modern living. The property has been skilfully extended, creating a generous kitchen/dining/family area that is ideal for both entertaining and everyday family life. With three well-proportioned bedrooms, this home caters to a variety of living arrangements. The first floor features two double bedrooms both with fitted wardrobes and eaves storage. There is also a modern shower room. The ground floor boasts a large open plan kitchen/living area plus a second living room and a double bedroom with fitted wardrobes. In addition there is a large bathroom comprising of a walk in shower, beautiful bath, wc and two vanity wash hand basins, ensuring ample facilities for all residents. Externally there is an impressive driveway that provides off-street parking for approximately three vehicles. This delightful bungalow is perfect for families, couples, or anyone seeking a comfortable and stylish home in a desirable location. With its thoughtful design and ample living space, this property is sure to impress. Don't miss the opportunity to make this lovely bungalow your new home.

ENTRANCE HALLWAY

Door to the side elevation. Central heating radiator. Access to the kitchen/family room, bedroom one, bathroom and staircase to first floor.

KITCHEN/FAMILY ROOM



Large open plan kitchen/diner/family room with a large range of modern wall and base units integrated oven, dishwasher, fridge/freezer. Large island with space for bar stools. Worktops incorporating a hob and sink. Family seating area. French door and double glazed window to the rear. Access into the living room.

LIVING ROOM



Double glazed window to the front. Central heating radiator. Electric fire.

BATHROOM



Large bathroom comprising of a bath, his and hers vanity wash hand basins, large walk in shower and wc. Further units with integrated washing machine dryer. Storage cupboard.

BEDROOM ONE



Double bedroom with fitted wardrobes. Double glazed window to the front. Central heating radiator.

FIRST FLOOR LANDING

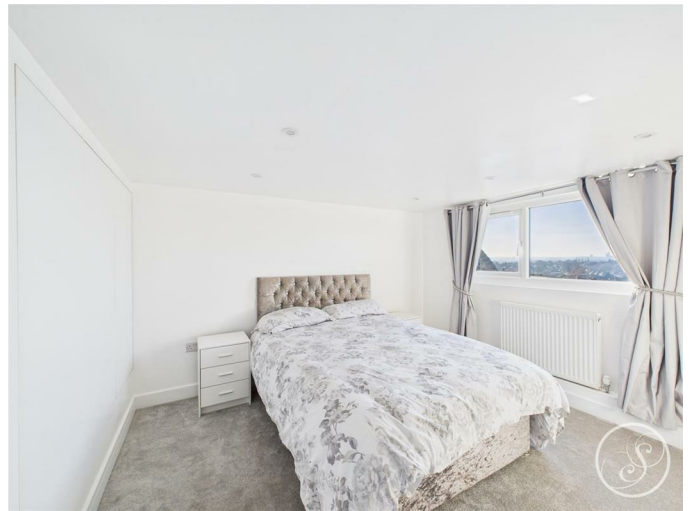
Access to bedrooms and shower room.

BEDROOM TWO



Double bedroom with built in storage. Double glazed window to the rear.

BEDROOM THREE



Double bedroom with built in storage. Double glazed window to the rear.

SHOWER ROOM



Comprising of a shower cubicle, WC and wash hand basin. Heated towel rail. Window to the rear.

EXTERNAL



Spacious plot with block paved driveway, garden laid to lawn at the front. To the rear is a patio seating area leading down to a garden laid to lawn.

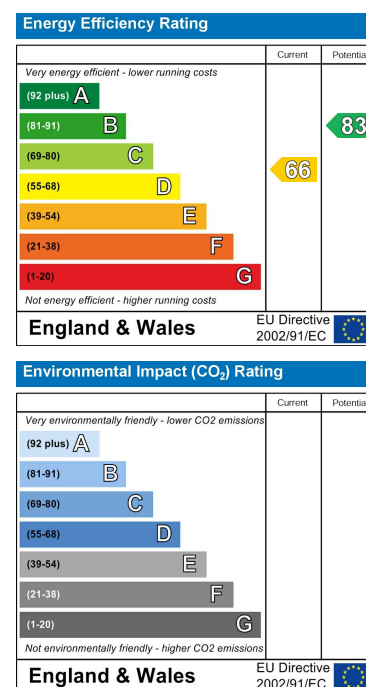
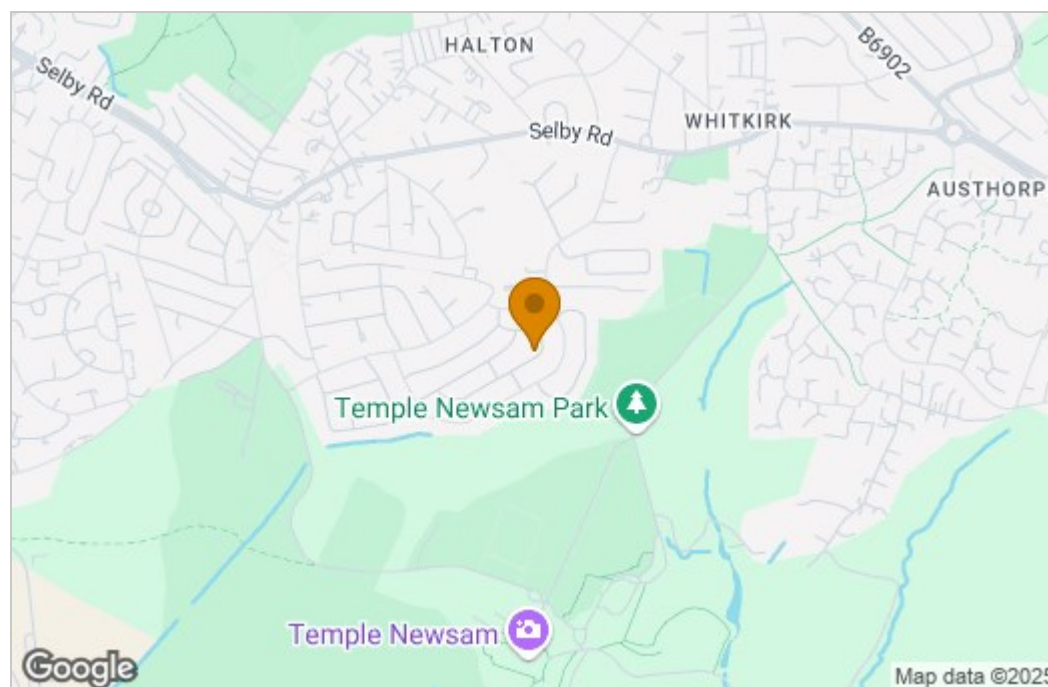
STORAGE

Door to front.

Floor Plan



Area Map



These particulars, whilst believed to be accurate are set out as a general outline only for guidance and do not constitute any part of an offer or contract. Intending purchasers should not rely on them as statements of representation of fact, but must satisfy themselves by inspection or otherwise as to their accuracy. No person in this firm's employment has the authority to make or give any representation or warranty in respect of the property.

1 Colton Road, Leeds, West Yorkshire, LS15 9AA
Tel: 0113 260 9111 Email:
east@stoneacreproperties.co.uk <https://www.stoneacreproperties.co.uk>

View properties before they come on the market by following us on Instagram - @stoneacreproperties

