



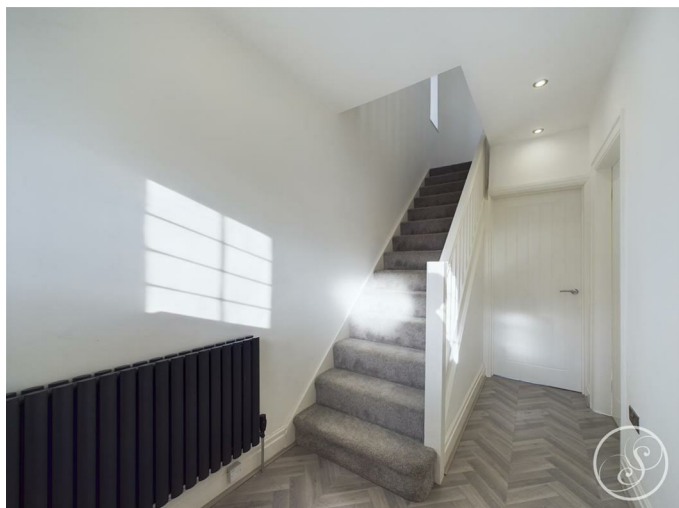
Stoneacre
Properties



Selby Road, Leeds, LS15 8PP
£1,500 Per Month

Offered TO LET is this BEAUTIFULLY FINISHED three bedroom semi-detached family home. Benefitting from a full renovation, this stunning property is ready to move into and be made a home. Close to local amenities, schools and transport links via the M1 and public transport. Comprising of; a entrance hallway, lounge, a modern spacious kitchen diner, downstairs wc, three bedrooms and a bathroom. Externally the property has a driveway, and gardens to the front a rear. The rear benefits from a raised decking area leading to the garden laid to lawn. Viewings are highly recommended to appreciate all this property has to offer. AVAILABLE NOW. UNFURNISHED.

ENTRANCE HALLWAY



Open entrance hallway, with stairs leading to the first floor. Central heating radiator. Door to the front.

LOUNGE



Finished to a neutral standard, with power points ready for a mounted tv. Double glazed bay window to the front. Central heating radiator.

KITCHEN DINER



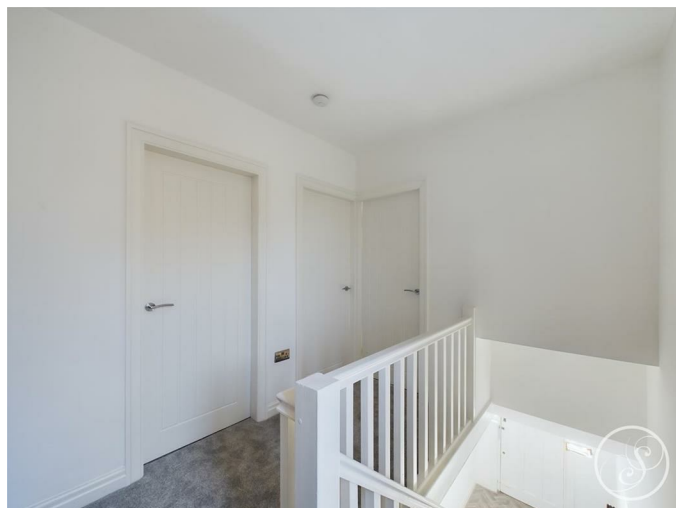
Finished to a high standard fitted with a modern kitchen with integrated washing machine, dishwasher, fridge freezer and electric oven. Quartz worktops incorporating a electric stove, and sink. Space for a dining room table. French doors and double glazed window to the rear. Downstairs WC.

DOWNSTAIRS WC



WC and wash hand basin.

FIRST FLOOR LANDING



Access into the bedrooms and bathroom.

BEDROOM ONE



Double bedroom with double glazed bay window to the front. Central heating radiator.

BEDROOM TWO



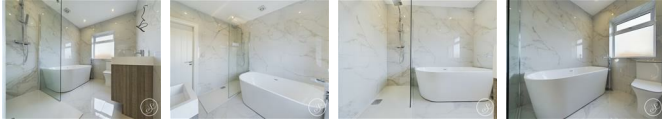
Double bedroom with double glazed window to the rear. Central heating radiator.

BEDROOM THREE



Double glazed window to the front. Central heating radiator.

BATHROOM



Stunning bathroom fitted with a walk in shower, bath, wc and wash hand basin. Double glazed window to the rear.

EXTERNAL



Externally to the front of the property is a garden laid to lawn and driveway. To the rear is a raised decking and concrete pad. Garden laid to lawn surrounded by mature shrubbery.

Floor Plan

