



Stoneacre
Properties



Sherburn Place, LS14 5BS

£185,000

*****NO CHAIN***** Stoneacre Properties are proud to present for sale this beautiful three bedroom mid terrace. Located in a sought after area with transport links and local amenities including schools. The property has recently benefitted from a refurbishment throughout. Ideal property for a first time buyer.

Comprising of a; entrance hallway, kitchen, lounge/diner, downstairs wc, three bedrooms and a bathroom. Externally the property has a gardens to the front and rear. Viewings are highly recommended.

Entrance Hallway



Door to front. Central heating radiator, door off to w/c and storage cupboard. Door giving access to kitchen. Stairs leading to first floor accommodation.

WC



Double glazed window to front. White low flush w.c and wash hand basin.

Kitchen



Double glazed window to the rear. Door leading to rear garden. Space for fridge/freezer, plumbing for washing machine and space for a dryer. Built in oven with electric hob. Breakfast bar.

Lounge/Diner

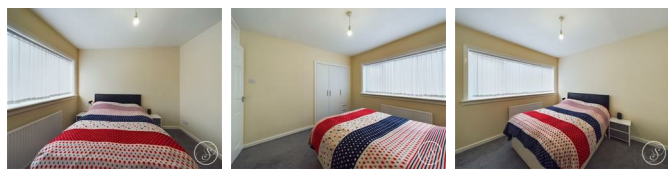


Two central heating radiators. Double glazed windows to front and rear.

First Floor Landing

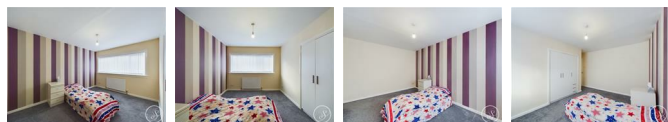
Doors giving access to bedroom one, two, three, bathroom and storage cupboard. Loft access.

Bedroom One



Central heating radiator. Double glazed window to the rear. Built in wardrobes.

Bedroom Two

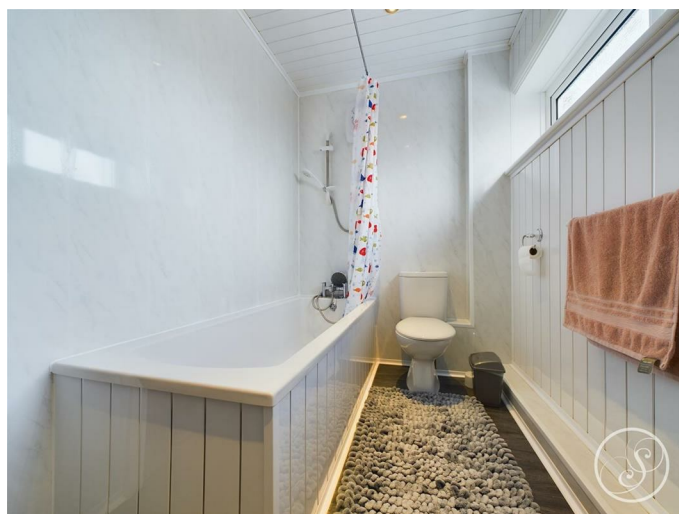


Central heating radiator. Double glazed window to the front. Built in wardrobes.

Bedroom Three

Double glazed window to the front elevation. Central heating radiator. Storage cupboards.

Bathroom



Double glazed windows. Central heating radiator. Bath with electric shower above. White w/c and hand basin.

External



To the front the property has a fenced in garden and path. To the rear is a flagged garden with a gate for access.

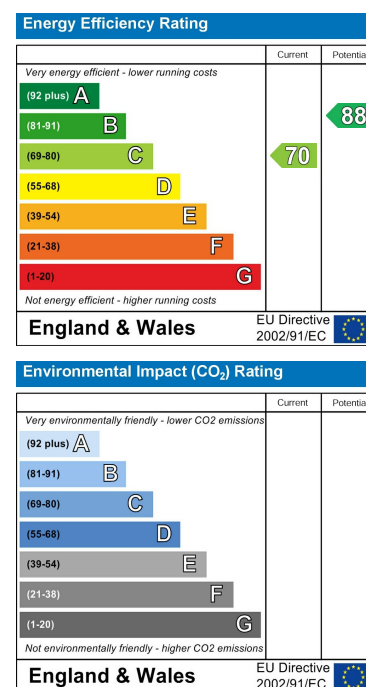
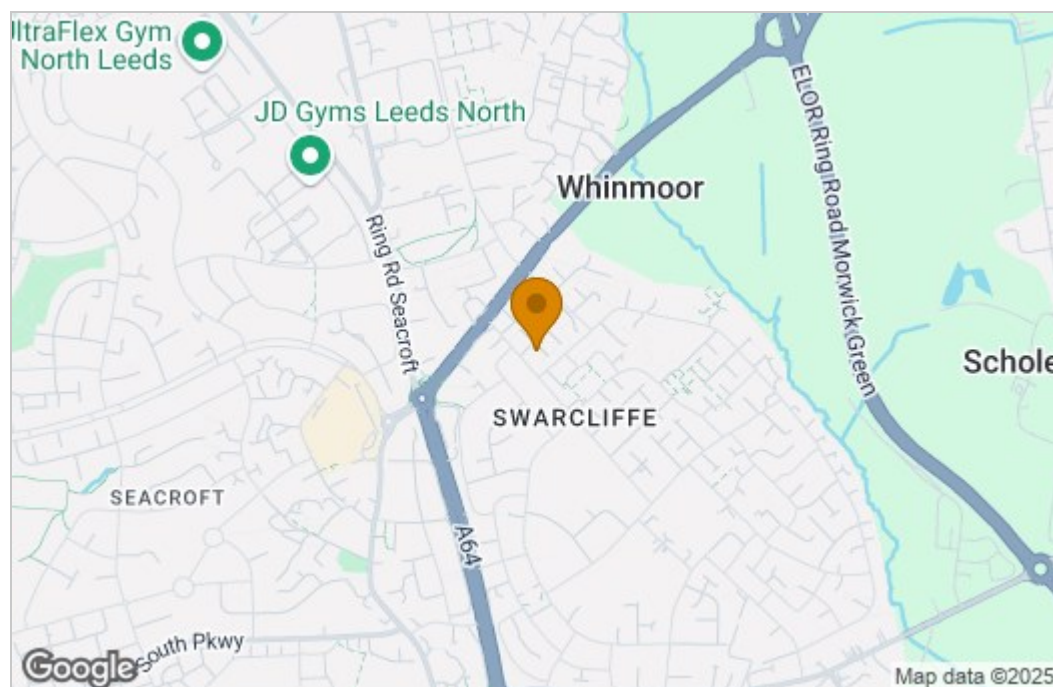
Agent note

We have been advised that the property is a Lindsey Parkinson Parkwall construction.
The vendor has advised the property has benefited from the insulation of a new roof.

Floor Plan



Area Map



These particulars, whilst believed to be accurate are set out as a general outline only for guidance and do not constitute any part of an offer or contract. Intending purchasers should not rely on them as statements of representation of fact, but must satisfy themselves by inspection or otherwise as to their accuracy. No person in this firm's employment has the authority to make or give any representation or warranty in respect of the property.

1 Colton Road, Leeds, West Yorkshire, LS15 9AA
Tel: 0113 260 9111 Email:
east@stoneacreproperties.co.uk <https://www.stoneacreproperties.co.uk>

View properties before they come on the market by following us on Instagram - @stoneacreproperties

