



**Stoneacre**  
Properties



**Temple Gate, Leeds, LS15 0PL**  
**£325,000**

Stoneacre Properties are delighted to offer for sale this three bedroom semi detached family home built by Wilson. This spacious property is located on Temple Gate so has great access to all the local amenities on offer and Whitkirk and Temple Newsam. Comprising: entrance hall, lounge, dining room, kitchen, three bedrooms, bathroom and separate wc. Externally there are gardens to the front and rear. There is also a garage. This property is ideal for anyone wanting to create their own perfect family home.



## Entrance Hall



Door to the front. Central heating radiator. Staircase leading to first floor.

## Lounge



Window to the front. Central heating radiator.

## Dining Room



Window to the rear. Central heating radiator.

## Kitchen

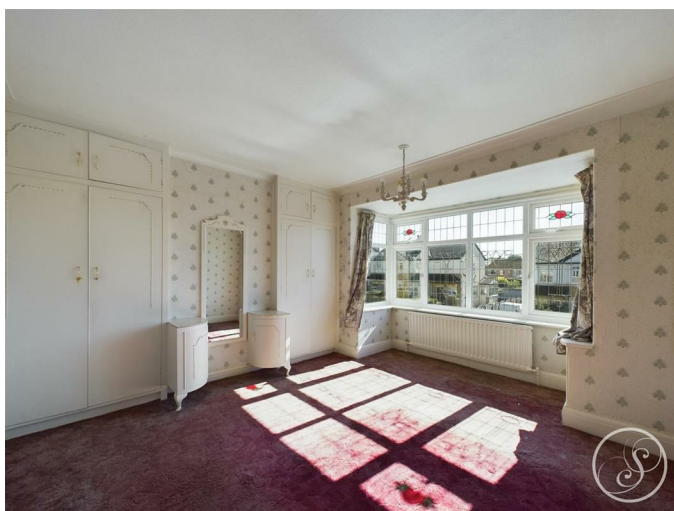


Fitted with a range of storage units, space for a cooker. Window and door to the rear.

## First Floor Landing

Loft access.

## Bedroom One



Fitted wardrobes. Window to the front. Central heating radiator.

## Bedroom Two



Window the rear. Central heating radiator.



### Bedroom Three



Window to the front. Central heating radiator.

### Bathroom



Fitted with a bath with hand held shower over and a wash hand basin. Window to the rear.

### Separate WC



Window to the rear. WC.

### External



Externally the property has a driveway to the side leading to a garage. There is also gardens to both the front and rear.

### Garage

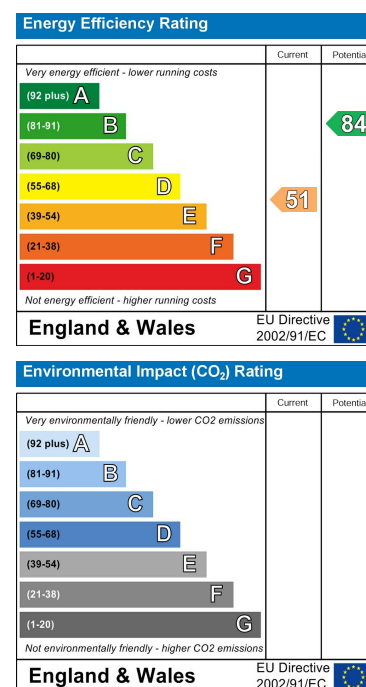
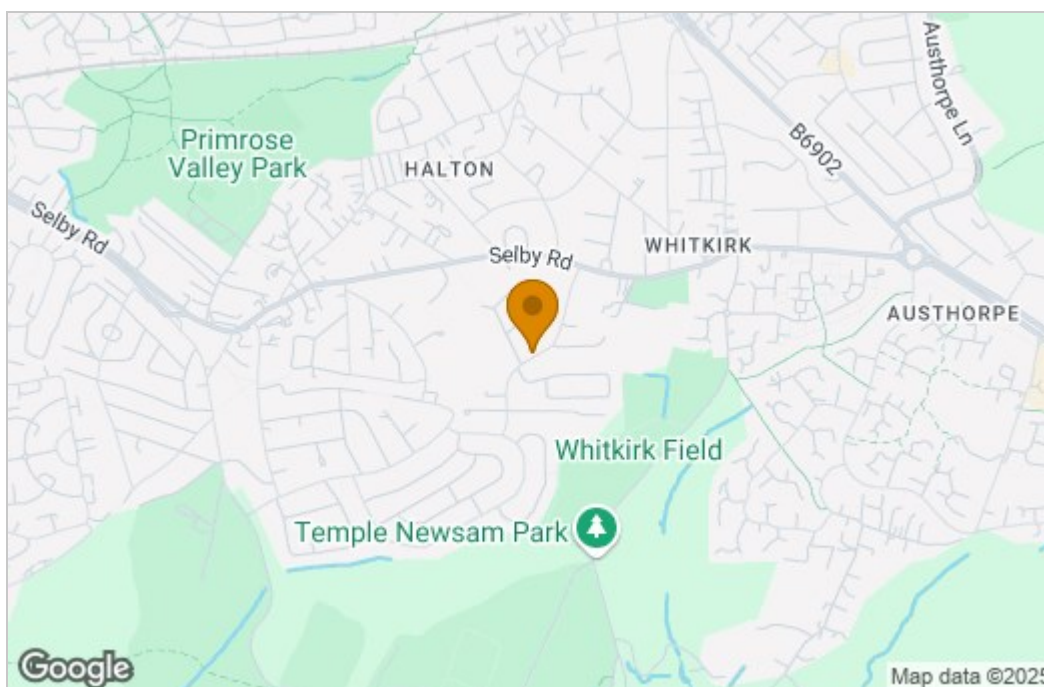


Up and over door to front.

## Floor Plan



## Area Map



These particulars, whilst believed to be accurate are set out as a general outline only for guidance and do not constitute any part of an offer or contract. Intending purchasers should not rely on them as statements of representation of fact, but must satisfy themselves by inspection or otherwise as to their accuracy. No person in this firm's employment has the authority to make or give any representation or warranty in respect of the property.

1 Colton Road, Leeds, West Yorkshire, LS15 9AA  
Tel: 0113 260 9111 Email:  
east@stoneacreproperties.co.uk <https://www.stoneacreproperties.co.uk>

**View properties before they come on the market by following us on Instagram - @stoneacreproperties**

