



Stoneacre
Properties



Garland Drive, Leeds, LS15 9AT

£185,000

Stoneacre Properties are proud to present for sale to the market this three bedroom mid terrace house. Ideal for first time buyers and investors. The property is in need of modernisation which allows the buyer to make the property their own. Comprising of an; entrance porch, lounge diner, kitchen, three bedrooms and a bathroom. Externally the property has gardens to the front and rear. Viewings are highly recommended.

ENTRANCE PORCH

Door to front.

LOUNGE/DINER



Large open lounge diner with gas feature place. Windows to front and rear. Stairs to first floor with storage cupboard.

KITCHEN

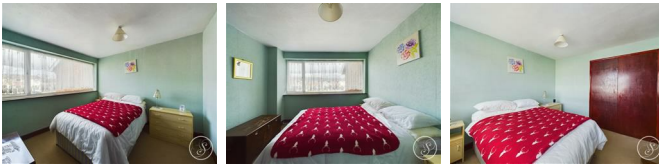


Fitted with a range of wall and base units. Door to the rear. Space for a range cooker.

FIRST FLOOR LANDING

Loft access.

BEDROOM ONE



Double bedroom with built in wardrobe. Window to the rear.

BEDROOM TWO



Double bedroom with built in wardrobe. Window to the front.

BEDROOM THREE



Window to the front.

BATHROOM



Fitted with a bath with hand held shower above, wash hand basin and WC. Window to the rear.

EXTERNAL

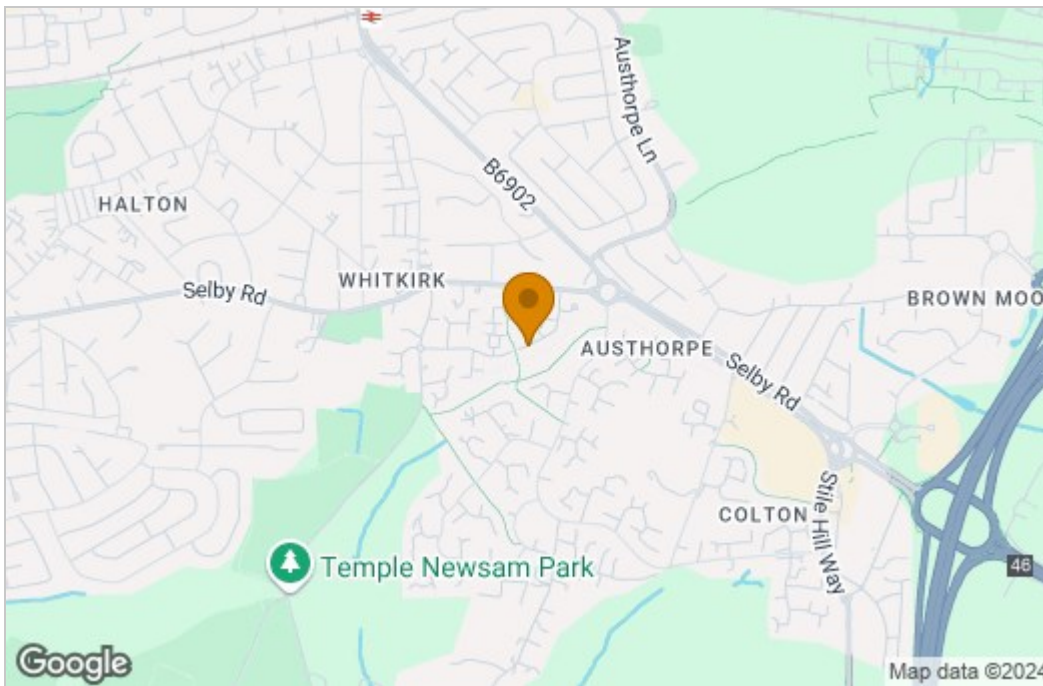


Externally to the front the property consists of a path and gravel with mature shrubbery. To the rear of the property is a garden mainly laid to lawn with a flagged patio area.

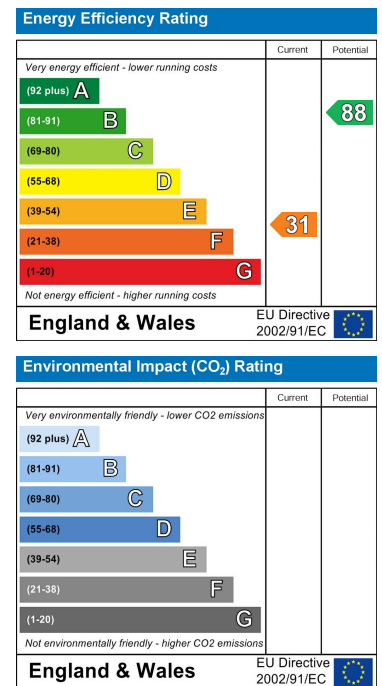
Floor Plan



Area Map



Energy Efficiency Graph



These particulars, whilst believed to be accurate are set out as a general outline only for guidance and do not constitute any part of an offer or contract. Intending purchasers should not rely on them as statements of representation of fact, but must satisfy themselves by inspection or otherwise as to their accuracy. No person in this firm's employment has the authority to make or give any representation or warranty in respect of the property.

