



Stoneacre
Properties



Farndale Approach, Leeds, LS14 5BR

£135,000

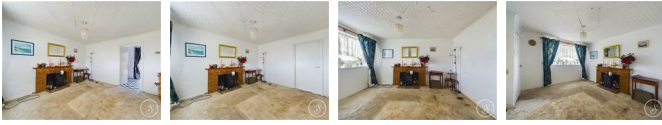
Stoneacre Properties are proud to present to the market for sale this two bedroom end terrace. Ideal for first time buyers and investors. Located near local amenities and schools. Easy transport links.

Comprising of a lounge and kitchen to the ground floor. To the first floor are two bedrooms and a bathroom. Externally there are gardens to front, side and rear. Further storage outside. Viewings are highly recommended.

Entrance Hallway

Door to front. Stairs leading to first floor. Door to lounge.

Lounge



Window to the front. Door to kitchen to the rear.

Kitchen



Fitted with wall and base units, space for a range cooker and fridge freezer, plumbing for a washing machine. Window and door to the rear. Built in storage cupboard.

First floor landing

Storage cupboard.

Bedroom One



Built in wardrobes. Window to the front.

Bedroom Two



Window to the rear. Built in wardrobe.

Wet Room



Fitted with a wash hand basin, WC and electric shower. Window to the rear.

External



Externally the property has gardens to the front, side and rear. Steps at the rear leading to the gate.

Agent Note

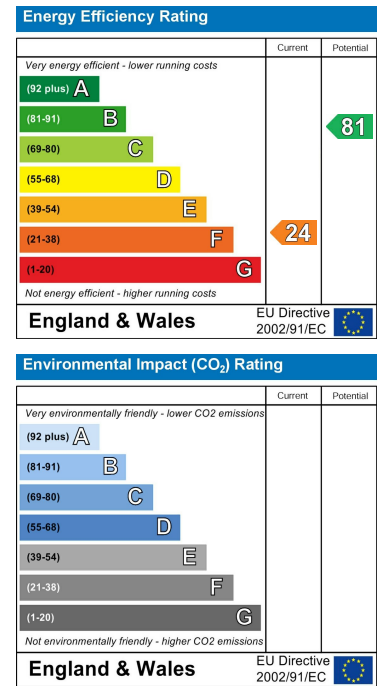
We have been advised that the property is of Non-standard construction. Lindsey Parkinson Parkwall build.

Floor Plan

Area Map



Energy Efficiency Graph



These particulars, whilst believed to be accurate are set out as a general outline only for guidance and do not constitute any part of an offer or contract. Intending purchasers should not rely on them as statements of representation of fact, but must satisfy themselves by inspection or otherwise as to their accuracy. No person in this firm's employment has the authority to make or give any representation or warranty in respect of the property.

