



**Stoneacre**  
Properties



**Templegate Road, Leeds, LS15 0HF**

**£375,000**

Stoneacre Properties are delighted to offer for sale this spacious extended three bedroom detached bungalow. Situated upon a popular residential estate with good access to transport links, shops and the wide open space on offer at Temple Newsam. Briefly comprising: entrance, lounge/diner, second sitting room, kitchen, three bedrooms and a shower room. Externally this beautiful bungalow benefits from a driveway with car port and well maintained gardens to both the front and rear. Early viewings are highly recommended to appreciate all that this home has to offer.



## ENTRANCE

Door to the side. Window to the front. Central heating radiator.

## LOUNGE/DINER



Large open plan lounge/diner featuring a gas fire with surround. Double glazed windows to the front. Ample space for dining table.

## KITCHEN



Fitted with a range of floor and wall units. Space for a range cooker. Plumbing for a washing machine. Two additional storage cupboards. Double glazed window to the rear and an external door.

## SITTING ROOM



Sliding patio doors to the side and double glazed window to the rear. Central heating radiator.

## BEDROOM ONE



Double bedroom with fitted wardrobes. Double glazed window to the front. Central heating radiator.

## INNER HALLWAY

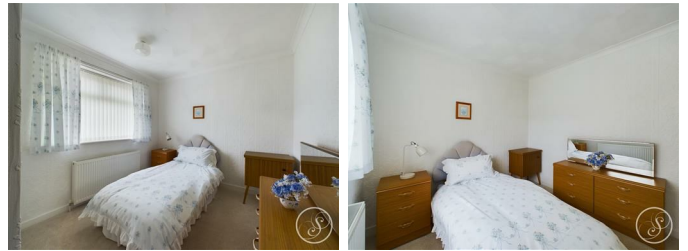
Loft access. Storage cupboard.

## BEDROOM TWO



Double bedroom. Window to the side and central heating radiator.

## BEDROOM THREE



Window to the rear. Central heating radiator.

## SHOWER ROOM



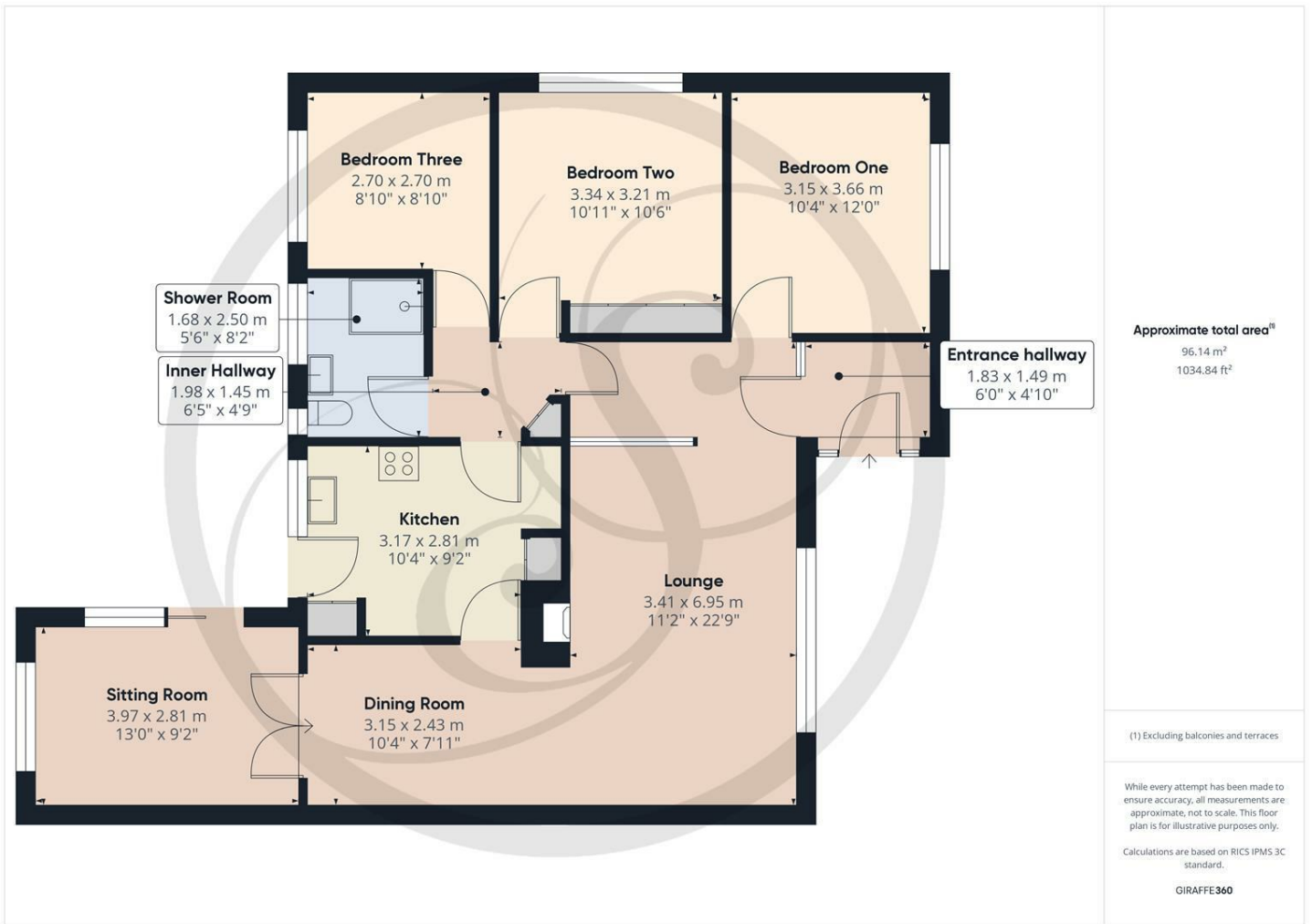
Fitted with a vanity wash hand basin, wc and shower cubicle. In addition there is two double glazed windows and tiling.

## EXTERNAL

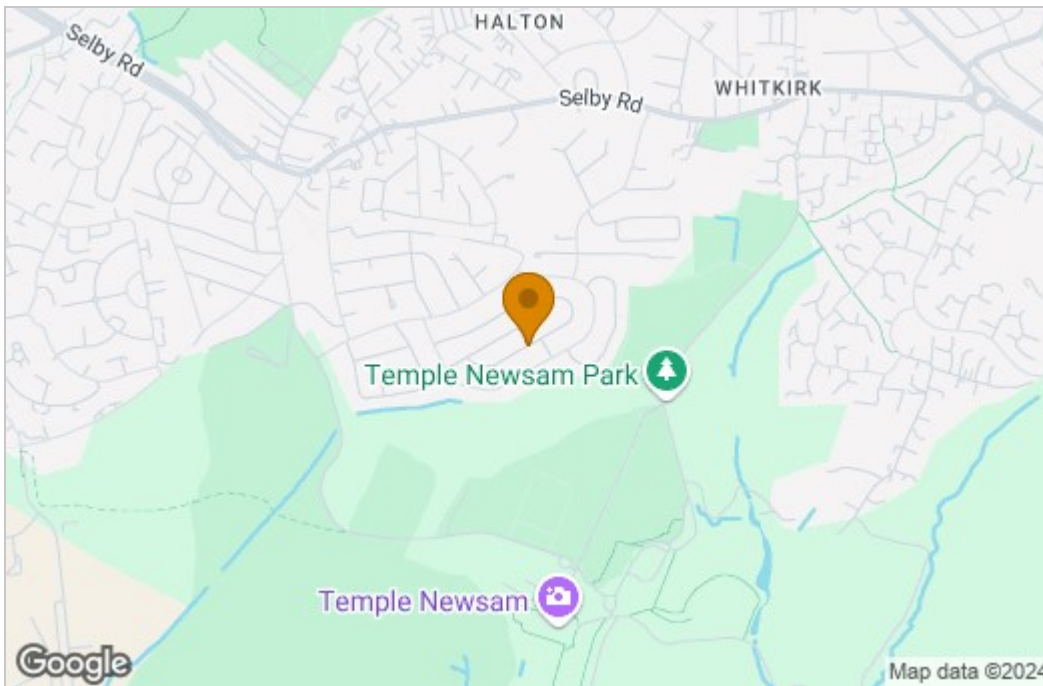


Externally the property boast a driveway leading to the side with a carport. To the rear is a large garden laid to lawn with a paved path around and mature trees and shrubbery. There is also a lawned garden to the front.

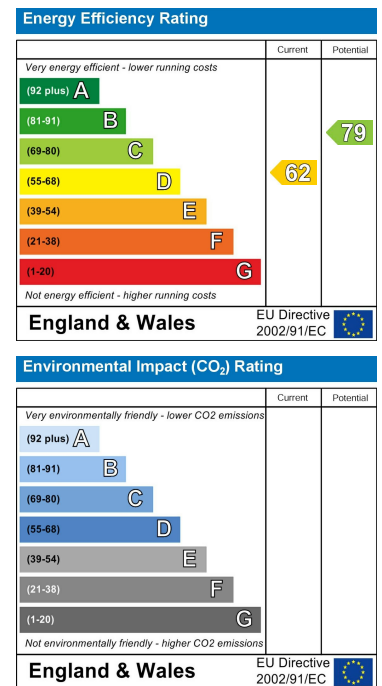
## Floor Plan



## Area Map



## Energy Efficiency Graph



These particulars, whilst believed to be accurate are set out as a general outline only for guidance and do not constitute any part of an offer or contract. Intending purchasers should not rely on them as statements of representation of fact, but must satisfy themselves by inspection or otherwise as to their accuracy. No person in this firm's employment has the authority to make or give any representation or warranty in respect of the property.

