



Stoneacre
Properties



North Parkway, Leeds, LS14 6PX

£200,000

Stoneacre Properties are proud to present for sale to the market this two bedroom semi detached house situated on a large plot with a gated driveway to the front with parking for multiple cars. Located near to local amenities such as schools and shops. Comprising of a lounge, kitchen diner, two bedrooms, a bathroom and a useable loft space. Externally the property has a driveway to the front and side. To the rear is a enclosed garden and patio area. Viewings are highly recommended to appreciate all this property has to offer.

ENTRANCE HALLWAY



Door to the front. Central heating radiator. Storage cupboard under the stairs.

LOUNGE



Sliding patio doors to the rear leading to the garden. Central heating radiator.

KITCHEN DINER

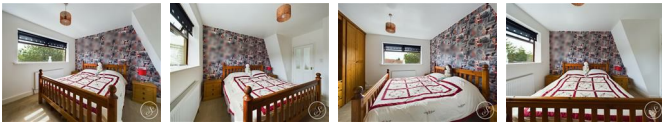


Large open kitchen diner fitted with a range of wall and base units. Space for a fridge freezer and dryer. Plumbing for a washing machine. Double glazed window to the front. Door to the rear.

FIRST FLOOR LANDING

Access into bedroom, bathroom and loft room. Double glazed window to the front.

BEDROOM ONE



Double bedroom with fitted wardrobes. Central heating radiator. Double glazed window to the rear.

BEDROOM TWO



Central heating radiator. Double glazed window to the rear.

BATHROOM



Fitted with a Bath, wash hand basin and WC. Double glazed window to the front. Central heating radiator.

USEABLE LOFT ROOM



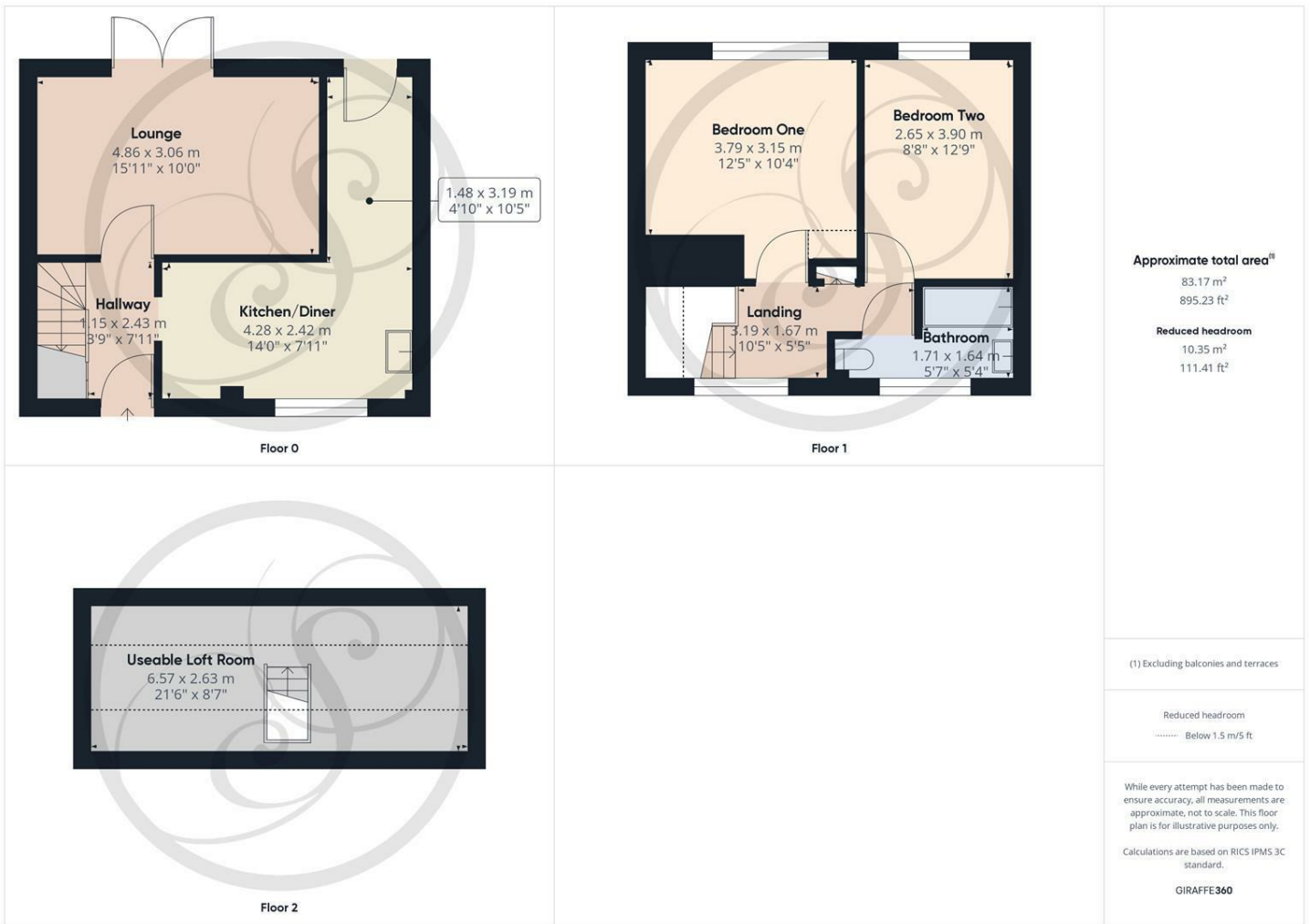
Loft space that could be used for storage or an office. Two skylights to the front.

EXTERNAL

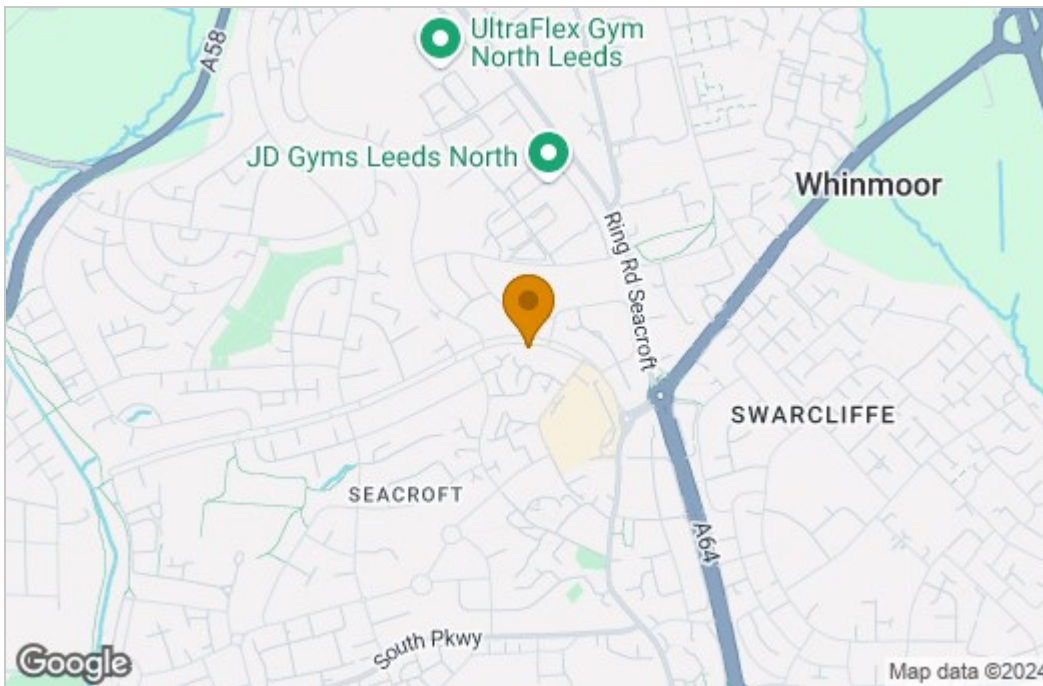


Externally the property boasts a large gated driveway with space for multiple cars. To the rear is an enclosed garden and a patio area.

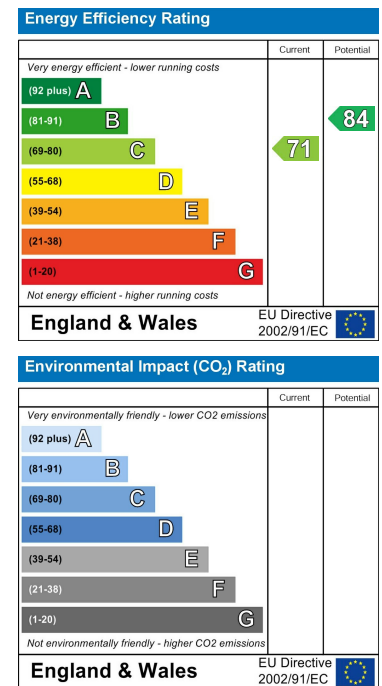
Floor Plan



Area Map



Energy Efficiency Graph



These particulars, whilst believed to be accurate are set out as a general outline only for guidance and do not constitute any part of an offer or contract. Intending purchasers should not rely on them as statements of representation of fact, but must satisfy themselves by inspection or otherwise as to their accuracy. No person in this firm's employment has the authority to make or give any representation or warranty in respect of the property.

1 Colton Road, Leeds, West Yorkshire, LS15 9AA
 Tel: 0113 260 9111 Email: east@stoneacreproperties.co.uk <https://www.stoneacreproperties.co.uk>

Want to view properties first before they come on the market? Follow our Instagram @stoneacreproperties.

