



Stoneacre
Properties



High Bank Approach, Leeds, LS15 9DA

£260,000

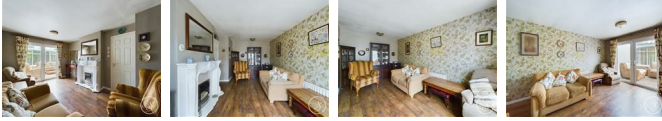
Stoneacre Properties are delighted to offer for sale this lovely detached bungalow that is situated in Colton village. Comprising: entrance hall, lounge, conservatory, kitchen, two bedrooms and wet room.

Externally there is a low maintenance garden to the rear and a garage. Viewings are highly recommended.

Entrance Hall

Door to side. Access into loft.

Lounge



French doors leading into conservatory. Feature surround. Central heating radiator.

Conservatory



French doors leading into garden.

Kitchen



Fitted with a range of wall and base units with work surfaces over incorporating a sink and drainer unit. Electric oven and gas hob with cooker hood over. Space for fridge/freezer. Double glazed window.

Bedroom One



Double glazed window. Central heating radiator.

Bedroom Two



Double glazed window. Central heating radiator.

Wet Room



Fitted with a shower, wash hand basin and wc. In addition there is tiling, a double glazed window and a heated towel rail.

External



To the front is a pebbled garden. To the side is a driveway. To the rear is a paved garden that is low maintenance.

Garage

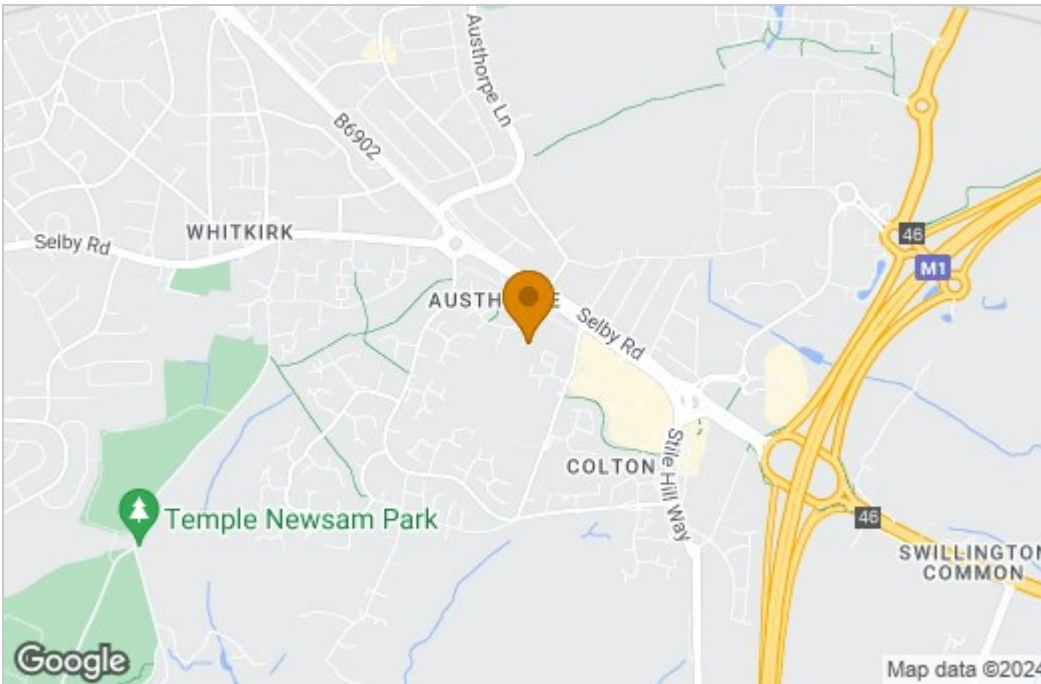
Up and over door.

Agent Note

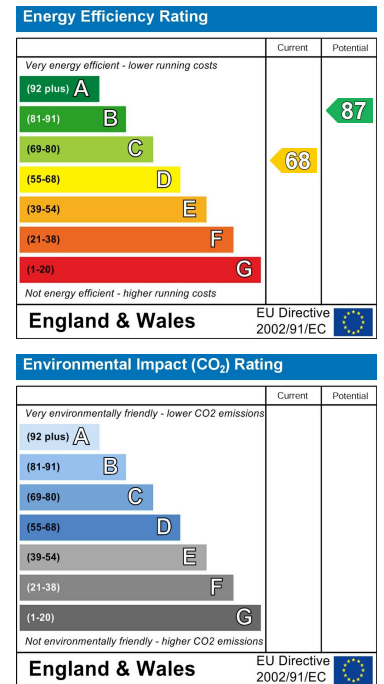
Stoneacre Properties would like to advise that the images provided date back to 2023.

Floor Plan

Area Map



Energy Efficiency Graph



These particulars, whilst believed to be accurate are set out as a general outline only for guidance and do not constitute any part of an offer or contract. Intending purchasers should not rely on them as statements of representation of fact, but must satisfy themselves by inspection or otherwise as to their accuracy. No person in this firm's employment has the authority to make or give any representation or warranty in respect of the property.

