



Stoneacre
Properties



Cherry Close, Leeds, LS14 6GA
Offers Over £240,000

This end town house is situated on a popular development, making it an ideal choice for those seeking a vibrant community atmosphere. This lovely home has been well maintained and boasts easy access to local amenities and Leeds City Centre. Comprising: entrance hall, guest wc, lounge, kitchen, three bedrooms and a bathroom. Externally to the front is off road parking and to the rear is an enclosed garden. Viewings are highly recommended.

Entrance Hall

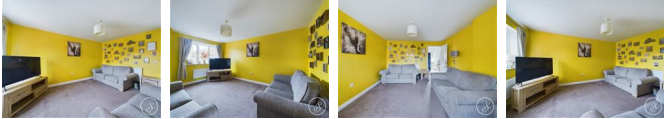
Door to front. Staircase leading to first floor.

Guest WC



Fitted with a wc and wash hand basin.

Lounge



To the front is a double glazed window. Central heating radiator.

Kitchen



Fitted with a modern range of wall and base units with work surfaces over incorporating a sink and drainer unit. Oven and hob with cooker hood over. Space for fridge/freezer. Plumbing for washing machine. French doors leading out to the rear garden. Built in storage cupboard.

First Floor Landing

Access into loft. Built in cupboard.

Bedroom One



Double glazed window to front. Central heating radiator.

Bedroom Two



Double glazed window to rear. Central heating radiator.

Bedroom Three



To the front is a double glazed window. Central heating radiator.

Bathroom



Fitted with a bath with shower over, wash hand basin and wc. In addition there is a towel rail, double glazed window and tiling.

External

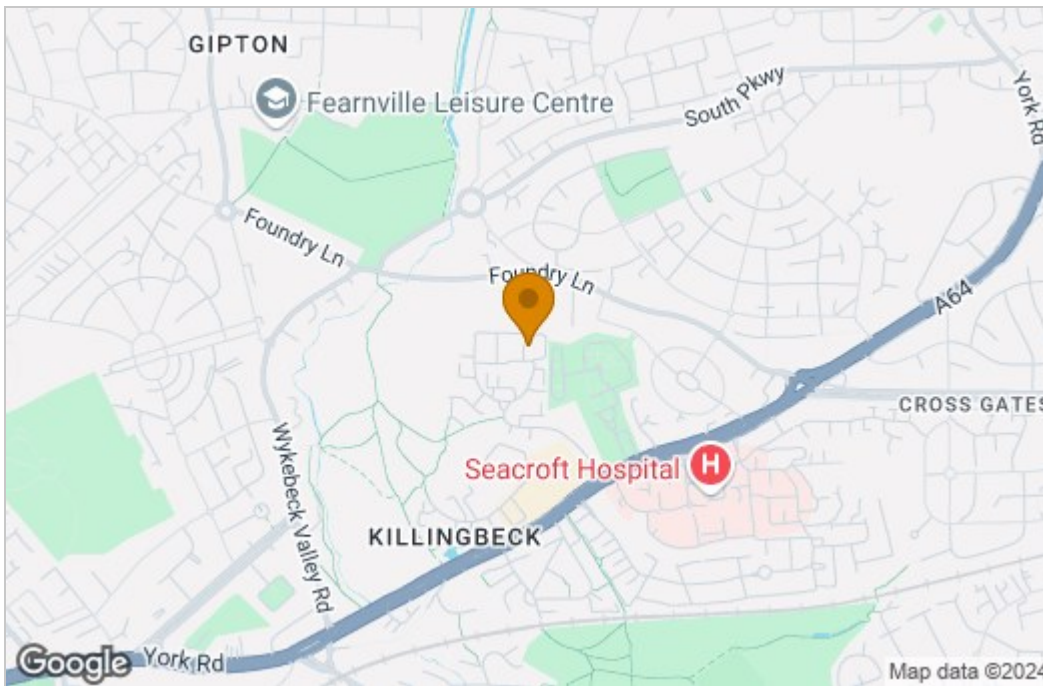


To the front is off street parking. To the rear is an enclosed garden that is mainly laid to lawn with a patio area.

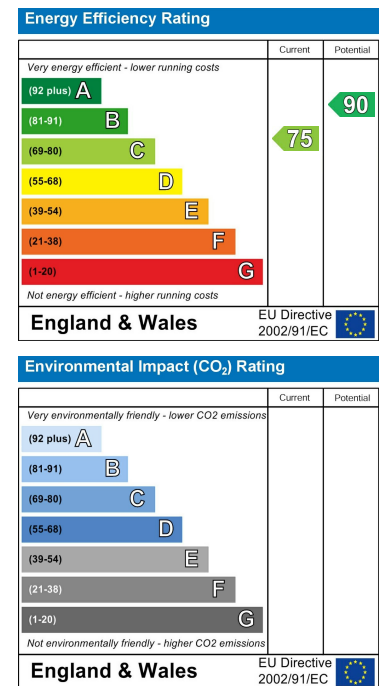
Floor Plan



Area Map



Energy Efficiency Graph



These particulars, whilst believed to be accurate are set out as a general outline only for guidance and do not constitute any part of an offer or contract. Intending purchasers should not rely on them as statements of representation of fact, but must satisfy themselves by inspection or otherwise as to their accuracy. No person in this firm's employment has the authority to make or give any representation or warranty in respect of the property.

