



Brookview, Copthorne

Guide Price £350,000 – £375,000

**MANSELL
McTAGGART**
— Trusted since 1947 —





Brookview, Copthorne

- 2 bedroom end of terrace property
- Popular village location, private road
- Modernised kitchen and bathroom
- South facing garden
- Driveway and parking for 2 cars
- Newly installed boiler
- Council Tax Band 'C' and EPC 'D'

Mansell McTaggart are delighted to present this beautifully presented 2-bedroom end-of-terrace property, ideally located in the sought-after village of Copthorne. Nestled on a private road, this charming home boasts the benefit of two parking spaces, with potential to expand for additional parking (STPP).

As you step into the inviting hallway, to the right, you will find a spacious living room, offering ample space for two comfortable sofas, a TV unit, and additional furnishings. The large bay window at the front allows natural light to flood the room, creating a bright and welcoming atmosphere.

Moving through the property, you will arrive at the modern kitchen/dining area, which has been recently renovated to a high standard. Featuring sleek, contemporary finishes, the kitchen benefits from French doors that open out onto the south-facing garden, providing a seamless flow between the indoor and outdoor spaces.



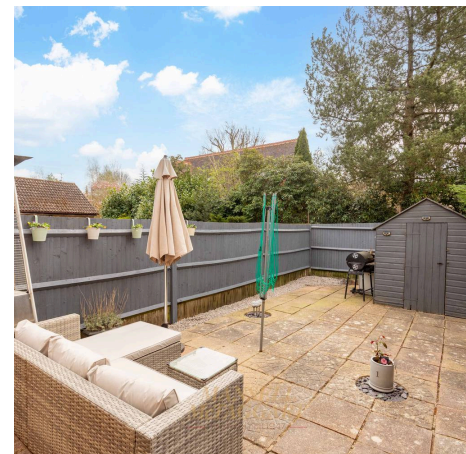
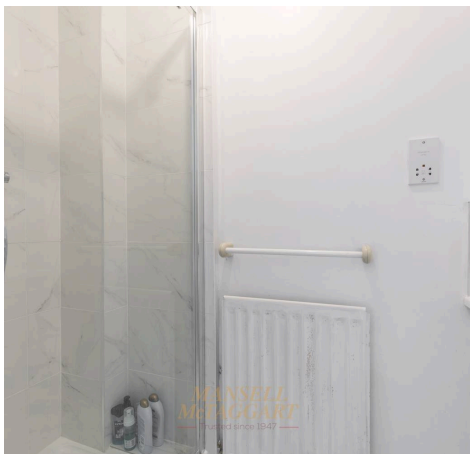


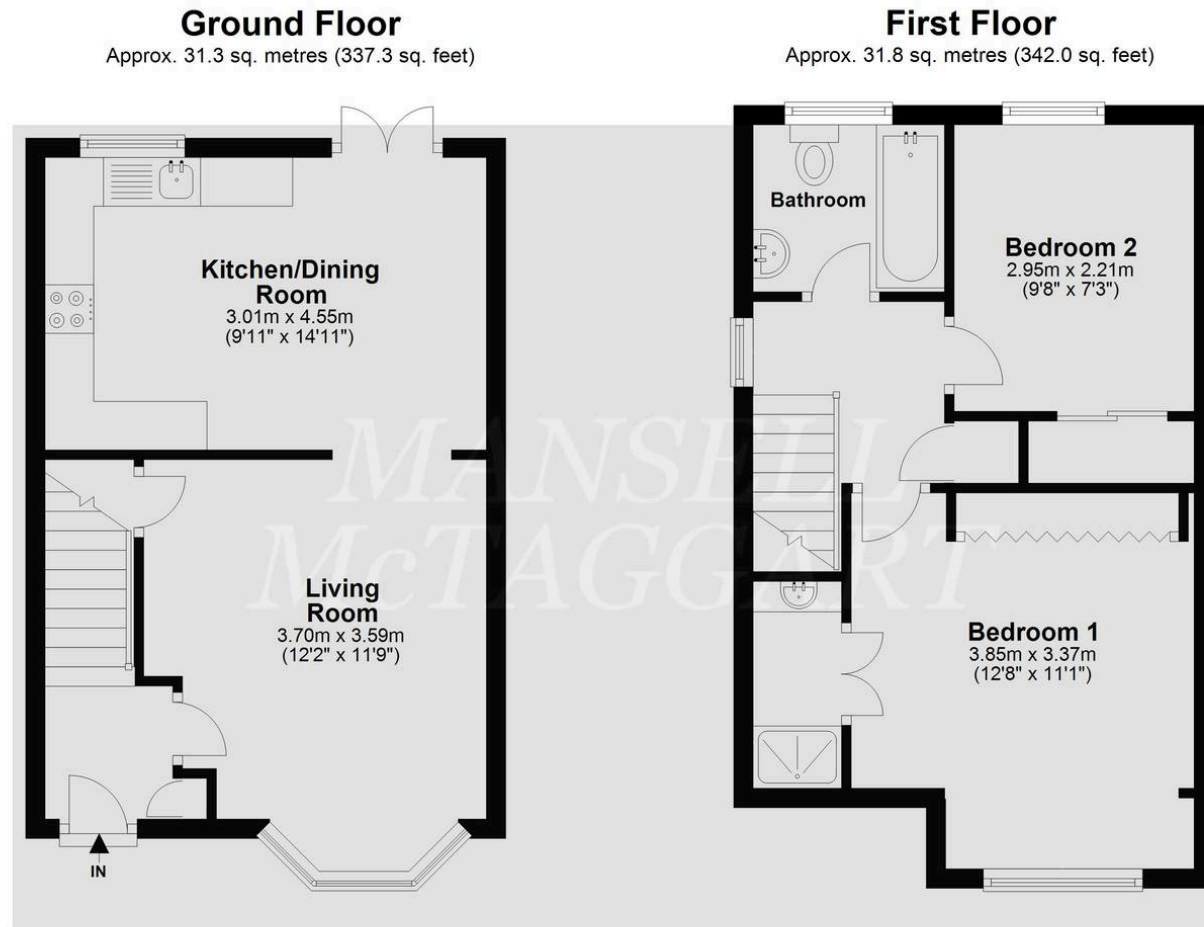
Brookview, Copthorne

Upstairs, you will discover two generously sized double bedrooms and a stylish family bathroom. The bathroom has been fully modernised and includes a bath with a shower attachment, a contemporary sink basin, WC, and a heated towel rail. Bedroom 2, located at the rear, offers a peaceful outlook over the garden and comes complete with built-in storage. The master bedroom, situated at the front of the property, is fitted with wardrobes and boasts the convenience of an en-suite shower room.

This property offers the perfect family home for those looking to be at the heart of a vibrant village community. The current owners have carried out extensive updates, including new flooring throughout, a newly installed boiler, and a fresh, modern aesthetic.

Early internal viewings are highly recommended to fully appreciate all that this property has to offer.





Whilst every attempt Has been made to ensure the accuracy of the floor plan contained here, measurements of doors, windows, rooms, and any other item are approximate, and no responsibility is taken for any error, omission, or misstatement. This plan is for illustrative purposes only, and should only be used as such by any prospective buyer.
Plan produced using PlanUp.

Mansell McTaggart Copthorne
The Post House Brookhill Road, Copthorne – RH10 3QJ
01342 717400
copthorne@mansellmctaggart.co.uk
www.mansellmctaggart.co.uk/branch/copthorne/

Consumer Protection from Unfair Trading Regulations 2008 We have not tested any apparatus, equipment, fixtures, fittings or services and so cannot verify that they are in working order or fit for purpose. You are advised to obtain verification from your solicitor or surveyor. References to the tenure of a property are based on information supplied by the seller. We have not had sight of the title documents and a buyer is advised to obtain verification from their solicitor. Items shown in photographs are not included unless specifically mentioned within the sales particulars, but may be available by separate negotiation.