



# 13 Withypitts, Turners Hill

Crawley



£425,000

**MANSELL  
McTAGGART**  
— Trusted since 1947 —



## 13 Withypitts

Turners Hill, Crawley

Mansell McTaggart are excited to present this beautiful 3 bedroom end of terraced family home, located in the popular semi-rural village location of Turners Hill.

Entering the home, you are greeted by the entrance hallway giving access to all rooms and stairs ascending to the first floor. In front of you is the open plan kitchen dining room. The kitchen comprises of an electric oven, large storage larder cupboard, space for free standing fridge freezer, gas hob and oak roll top work surfaces. The dining/breakfast area is a great size, perfect for entertaining guests. There is a door to the rear giving access to the rear garden. Heading through to the living room, you are greeted by a room flooded with natural light, decorated in a neutral décor. To the rear of the property is a Juliet style balcony, a perfect feature to have during a hot summer's day. Lastly the downstairs is benefited by a WC. Ascending to the first floor, you are greeted by the landing giving access to all rooms. The first and second bedrooms are great sizes, easily accommodating double beds. The third bedroom is a comfortable single. The upstairs is completed by the family bathroom. Comprising of a panel enclosed bath with power shower attachment, low level WC, wash hand basin and window to rear.



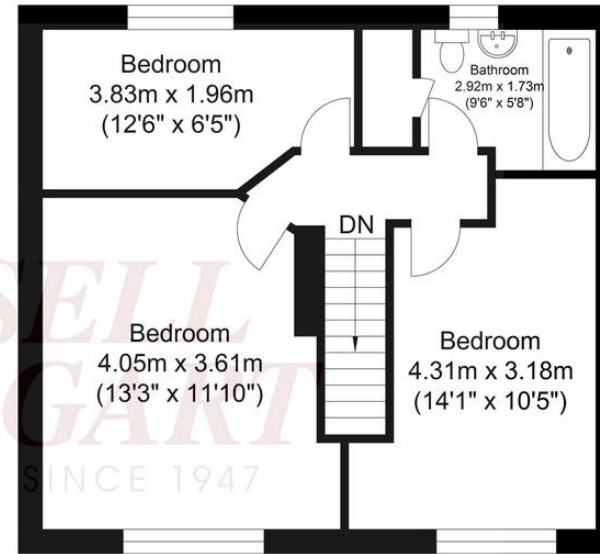
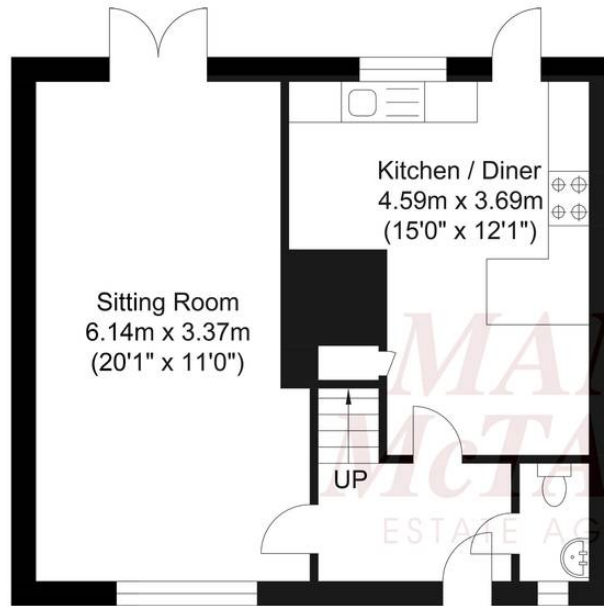
## 13 Withypitts

Turners Hill, Crawley

The property is situated in a quiet road, with a picturesque gate and little path approaching the property. The rear garden has beautiful views over the farmland, and benefits from a good amount of laid to lawn grass and space.

- End of terraced
- 3-bed family home
- Semi-rural
- Large garden
- Gas central heating
- Solar panels
- Council Tax Band 'C' and EPC 'B'





Ground Floor  
Approximate Floor Area  
449.39 sq ft  
(41.75 sq m)

First Floor  
Approximate Floor Area  
449.39 sq ft  
(41.75 sq m)

Approximate Gross Internal Area = 83.50 sq m / 898.78 sq ft

Illustration for identification purposes only, measurements are approximate, not to scale.

## Mansell McTaggart Copthorne

The Post House Brookhill Road, Copthorne - RH10 3QJ

01342 717400

[copthorne@mansellmctaggart.co.uk](mailto:copthorne@mansellmctaggart.co.uk)

[www.mansellmctaggart.co.uk/branch/copthorne/](http://www.mansellmctaggart.co.uk/branch/copthorne/)

Consumer Protection from Unfair Trading Regulations 2008 We have not tested any apparatus, equipment, fixtures, fittings or services and so cannot verify that they are in working order or fit for purpose. You are advised to obtain verification from your solicitor or surveyor. References to the tenure of a property are based on information supplied by the seller. We have not had sight of the title documents and a buyer is advised to obtain verification from their solicitor. Items shown in photographs are not included unless specifically mentioned within the sales particulars, but may be available by separate negotiation.