



**49 Cotehele Avenue, Keyham,
Plymouth, PL2 1LU**

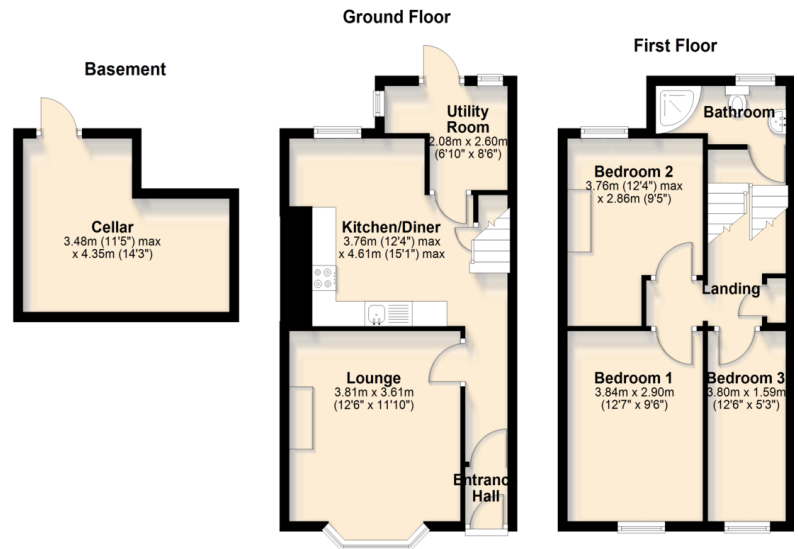
Asking Price Of £185,000



MILLINGTON TUNNICLIFF

49 Cotehele Avenue, Keyham, Plymouth, PL2 1LU

FLOORPLAN



3



1



1



A



D
55



71
SQM

Asking Price Of £185,000

SUMMARY

Located on the sought-after Cotehele Avenue in Keyham, this charming three-bedroom mid-terrace home offers bright and practical living space with plenty of appeal. Featuring a welcoming lounge, a spacious kitchen/diner with adjoining utility room, three well-proportioned bedrooms and a family bathroom, this property is ideal for first-time buyers or growing families. The enclosed courtyard provides a private outdoor retreat, while the full-height cellar offers excellent storage potential. With on-road parking available and offered with no onward chain, this fantastic home is ready to move straight into — an opportunity not to be missed!

CONTACT

19 Fore Street, Ivybridge,
Devon, PL21 9AB

EMAIL

info@millingtontunncliff.co.uk

TEL

01752 896020

www.millingtontunncliff.co.uk

Three Bedroom Terraced Property | Lounge | Fitted Kitchen/Diner | Adjoining Utility Room | Bathroom | Enclosed Rear Courtyard | Full Height Cellar | No Onward Chain | On Road Parking | Council Tax - Band A