



**36 Boringdon Park, Woodlands,
Ivybridge, PL21 9TY**

Asking Price Of £345,000


MILLINGTON TUNNICLIFF

36 Boringdon Park, Woodlands, Ivybridge, PL21 9TY



3



1



1



D

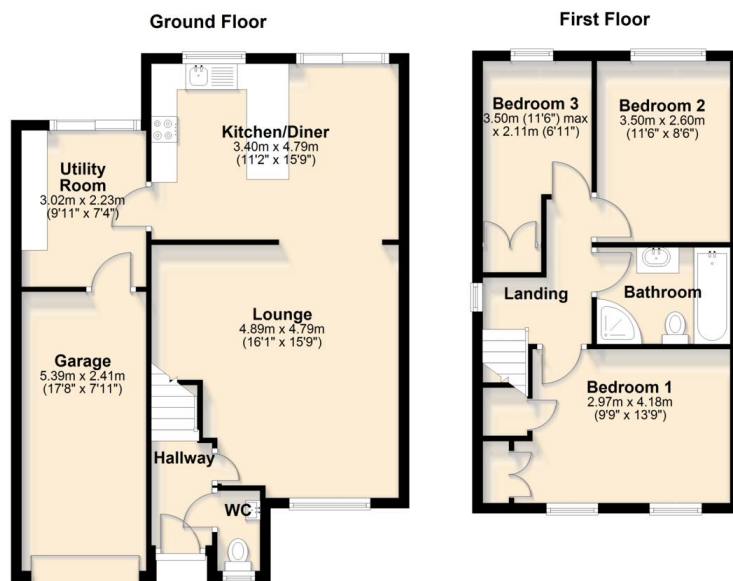


C
69



89SQ
M

FLOORPLAN



Asking Price Of £345,000

SUMMARY

Located on the sought-after Woodlands side of Ivybridge, this immaculate three-bedroom detached home offers spacious, modern accommodation throughout. The property includes a bright lounge, a newly fitted kitchen/diner with adjoining utility room, a downstairs WC, and a stylish updated bathroom, along with well-proportioned bedrooms. Outside, the home benefits from a level rear garden, attached garage, and driveway parking. Set in a desirable residential area close to local amenities and countryside walks, this is a superb opportunity to purchase a high-quality, move-in-ready home. EPC C 69

CONTACT

**19 Fore Street, Ivybridge,
Devon, PL21 9AB**

EMAIL

info@millingtontunnicliff.co.uk

TEL

01752 896020

www.millingtontunnicliff.co.uk

Three Bedroom Detached Home | Immaculately Presented | Lounge | Newly Fitted Kitchen/Diner | Utility Room | Garage & Driveway | Newly Fitted Bathroom | Level Rear Gardens | Cul-De-Sac Location | Spacious Accommodation