



**24 Pear Lane, Plympton, Devon,
PL7 2GB**

Offers Over £295,000


MILLINGTON TUNNICLIFF

**24 Pear Lane
Plympton
Devon
PL7 2GB**



3



2



1



C



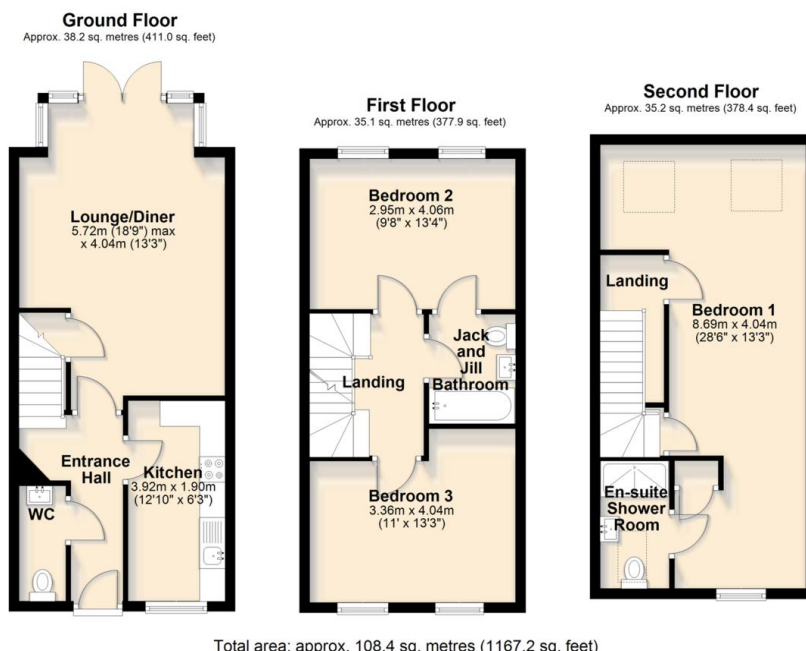
EPC

B 85



1167.2
SQ FT

FLOORPLAN



Total area: approx. 108.4 sq. metres (1167.2 sq. feet)

Offers Over £295,000

SUMMARY

This modern three-storey townhouse, built in 2019 and located in desirable Plympton, offers spacious and well-presented accommodation throughout. The ground floor features a generous lounge/diner, a modern fitted kitchen and a useful downstairs WC. The first floor provides two double bedrooms and a stylish Jack and Jill bathroom. The impressive principal bedroom occupies the top floor and includes its own en-suite shower room. Further benefits include driveway parking for two cars and an attractive enclosed rear garden. A contemporary home offering space, comfort and convenience in a great location. EPC B 85

Three Double Bedroom Home | Attractive Rear Garden | Off Road Parking For Two Vehicles | Principal Bedroom On The Second Floor With En-Suite | Jack & Jill Bathroom | Downstairs WC | Modern Fitted Kitchen | Lounge/Diner | Arranged Over Three Levels | Built In 2019

CONTACT
19 Fore Street
Ivybridge
Devon
PL21 9AB

EMAIL
info@millingtontunncliff.co.uk

TEL
01752 896020

www.millingtontunncliff.co.uk