

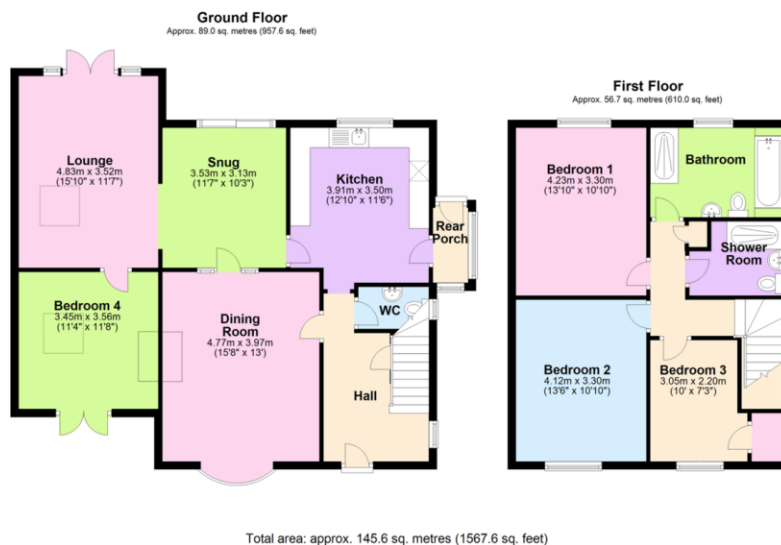
**10 Woodside Close
Ivybridge
Devon
PL21 0UE**

Offers Over £450,000



10 Woodside Close Ivybridge Devon PL21 0UE

FLOORPLAN



4



2



3



E



C 73



1567.6
SQFT

Offers Over £450,000

SUMMARY

Positioned at the end of a popular cul-de-sac within The Paddocks area in Ivybridge, this four bedroom detached house is located within close walking distance to the town centre and local amenities. The property offers extended accommodation which lends itself to provide a separate annexe, with accommodation briefly comprising; entrance hallway, lounge, snug, dining room, fitted kitchen, downstairs WC and bedroom to the ground floor. Upstairs you will find three bedrooms, family bathroom and additional shower room. Externally there is a generously sized rear garden, double garage and ample parking for several vehicles. The property offers scope for further improvement and benefits from solar panels to the roof. EPC C 73.

Close Walking Distance To The Town Centre | Enclosed
Generous Rear Gardens | Double Garage & Driveway |
Family Bathroom & Additional Shower Room | Downstairs
Bedroom | Downstairs WC | Fitted Kitchen | Three
Reception Rooms | Annexe Potential | Detached Four
Bedroom Home

CONTACT

19 Fore Street

Ivybridge

Devon

PL21 9AB

EMAIL

info@millingtontunnicliff.co.uk

TEL

01752 896020

www.millingtontunnicliff.co.uk