



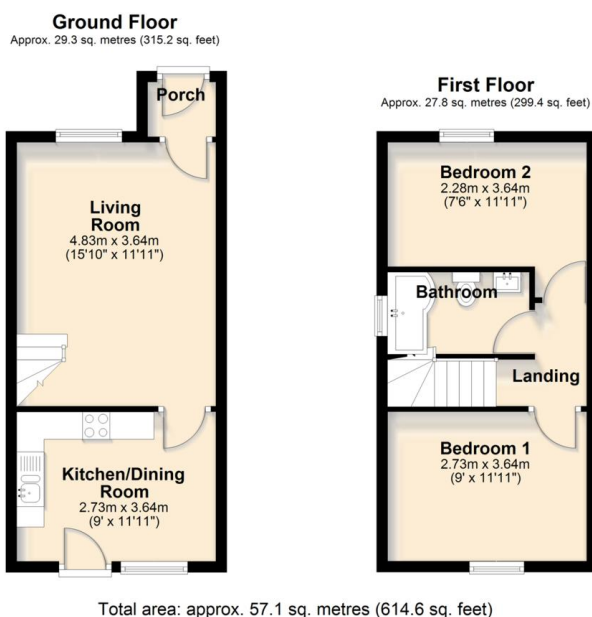
**51 Plover Rise
Ivybridge
Devon
PL21 9DA**

Guide Price £255,000


MILLINGTON TUNNICLIFF

51 Plover Rise Ivybridge Devon PL21 9DA

FLOORPLAN



2



1



1



B



C

71



614.6
SQFT

Guide Price £255,000

SUMMARY

A modern 2 double bedroom semi detached house set within this popular cul de sac on the doorstep of woodlands Primary School. The house offers an entrance porch, living room and kitchen/diner on the ground floor, together with landing, the 2 bedrooms and bathroom/WC on the upper floor. Externally there is a large corner plot with off road parking for numerous vehicles and a level southerly facing rear garden. There is a garage and block built office/workshop perfect for those working from home. The house is Upvc double glazed and gas centrally heated. EPC C 71.

2 Double Bedroom Semi Detached House | Feature Level
Corner Plot With Southerly Aspect At Rear | Off Road Parking
For Numerous Vehicles | Spacious Living Room | Garage |
Block Built Office/Workshop With WC Facility | Upvc Double
Glazing | Gas Central Heating | On Doorstep Of Woodlands
Primary School | EPC C 71

CONTACT

19 Fore Street

Ivybridge

Devon

PL21 9AB

EMAIL

info@millingtontunnicliff.co.uk

TEL

01752 896020

www.millingtontunnicliff.co.uk