



**1 Phoenix Place Loddiswell,
Kingsbridge, TQ7 4QW
Guide Price £182,950**

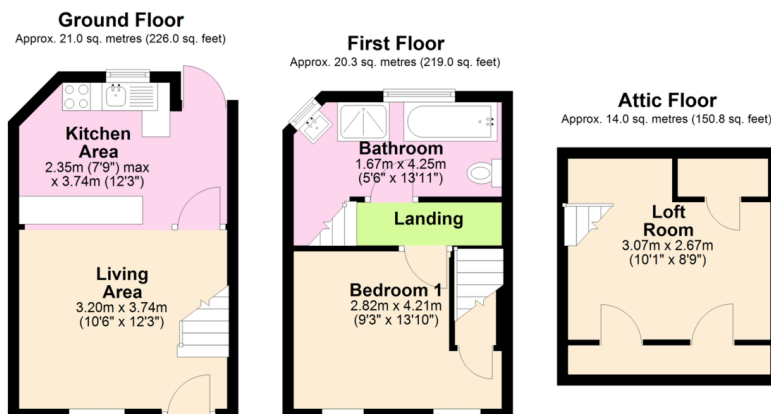
Find us on..




MILLINGTON TUNNICLIFF

1 Phoenix Place Loddiswell, Kingsbridge, TQ7 4QW

FLOORPLAN



Total area: approx. 55.4 sq. metres (595.9 sq. feet)



1



1



1



A



F 36



595
SQ
FT

Guide Price £182,950

SUMMARY

A delightful character cottage set within the heart of this popular South Hams village, perfect for those getting their foot on the ladder or for an economic holiday retreat. The cottage is compact offering open plan accommodation on the ground floor to include a living room and kitchen, whilst on the upper floors there is a double bedroom, 4 piece bathroom suite and feature loft room. There is electric central heating and double glazing. The cottage boasts numerous features to include exposed window lintels, a window seat in the living room and bedroom and stable door. Externally there is a rear courtyard. EPC F 36.

CONTACT

**19 Fore Street, Ivybridge,
Devon, PL21 9AB**

EMAIL

info@millingtontunnicliff.co.uk

TEL

01752 896020

www.millingtontunnicliff.co.uk

EPC F 36 | Character Features | Rear Courtyard Garden | 4 Piece Bathroom Suite | Feature Loft Room | Modern Kitchen | Open Plan Living Room | Double Glazing | Set Within The Heart Of Loddiswell | Charming Mid Terraced Cottage