

**4 Elizabeth Close  
Ivybridge  
Devon  
PL21 0PL  
Guide Price £225,000**

  
MILLINGTON TUNNICLIFF

# 4 Elizabeth Close Ivybridge Devon PL21 0PL



3



1



1



B

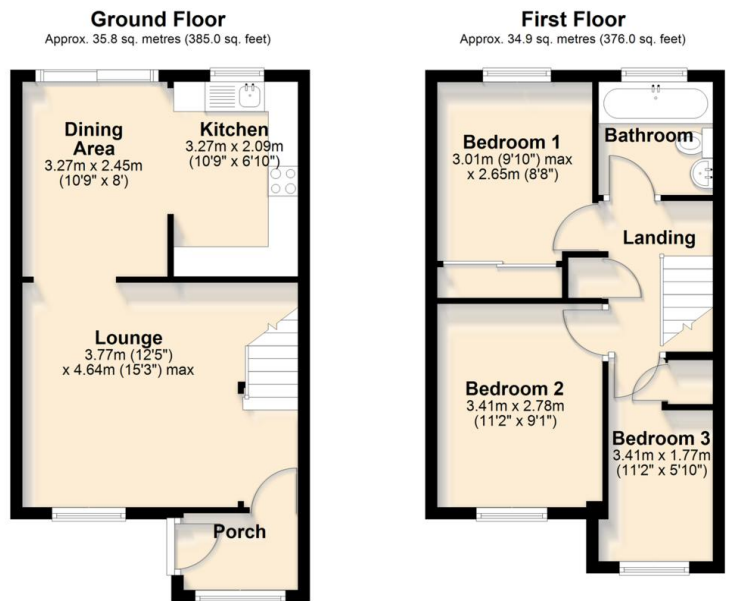


C 73



761.0  
SQFT

## FLOORPLAN



Total area: approx. 70.7 sq. metres (761.0 sq. feet)

## Guide Price £225,000

### SUMMARY

A 3 bedroom mid terraced house located at the start of this popular cul de sac on the eastern side of Ivybridge. The house offers an entrance porch, living room, dining and kitchen areas on the ground floor, together with landing, modern bathroom and the 3 bedrooms on the upper floor. externally there is a super southerly facing rear garden and garage. The house has Upvc double glazing and gas central heating. EPC C 73.

3 Bedroom Mid Terraced House | Modern Bathroom | Popular Cul De Sac Convenient To Local Schooling | Gas Central Heating | Upvc Double Glazing | Garage In A Block | Southerly Facing Rear Garden | Kitchen And Dining Areas With Integrated Appliances | Spacious Living Room | EPC 73

CONTACT  
19 Fore Street

Ivybridge

Devon

PL21 9AB

EMAIL  
info@millingtontunnicliff.co.uk

TEL  
01752 896020

www.millingtontunnicliff.co.uk