



**12 Grosvenor Court, Western Road
Ivybridge
Devon
PL21 9GH**

Guide Price £155,000

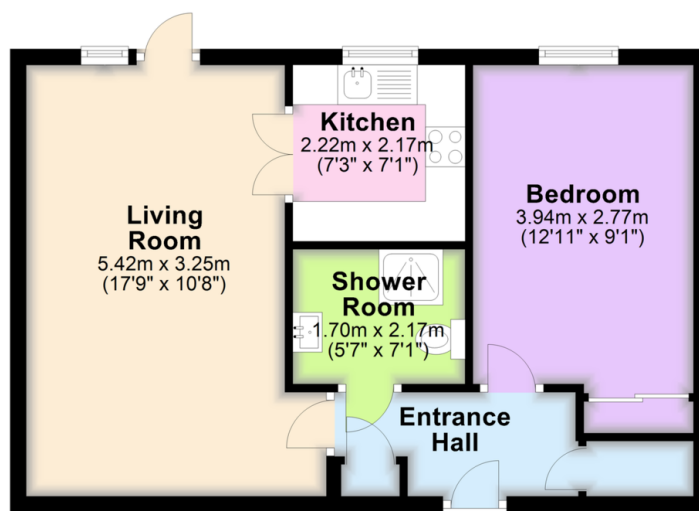

MILLINGTON TUNNICLIFF

**12 Grosvenor Court
Western Road
Ivybridge
Devon
PL21 9GH**

FLOORPLAN

Ground Floor

Approx. 45.5 sq. metres (489.5 sq. feet)



Total area: approx. 45.5 sq. metres (489.5 sq. feet)



1



1



1



A



C 70



489.5
SQFT

Guide Price £155,000

SUMMARY

A rare opportunity to purchase a modern flat which forms part of Grosvenor Court. Grosvenor Court is a purpose built McCarthy and Stone development with age restriction located within the heart of Ivybridge. Accommodation comprises a self contained entrance hall, living room, kitchen, double bedroom and shower room on the ground floor with entrance off the communal hall and unusually from the rear as well. There is electric heating and Upvc double glazing. Communal facilities include gardens, parking, a laundry and residents lounge. EPC C 70.

Located Within The Heart Of Ivybridge | EPC C 70 |
Communal Facilities | Spacious Living Room | Shower Room
| Economy 7 Heating | Upvc Double Glazing | Direct Access
To Gardens | Forming Part Of McCarthy And Stone Retirement
Living | 1 Bedroom Purpose Built Flat

CONTACT

19 Fore Street

Ivybridge

Devon

PL21 9AB

EMAIL

info@millingtontunnicliff.co.uk

TEL

01752 896020

www.millingtontunnicliff.co.uk