



MILLINGTON TUNNICLIFF

www.millingtontunnickliff.co.uk

Lutterburn Street, Ugborough, Ivybridge, PL21 0NG

£325,000

2 1 1



A charming 2 double bedroom detached cottage set within this hugely popular South Hams village. The house has an entrance porch, living room, cloakroom, kitchen/breakfast room and separate WC on the ground floor, together with the 2 double bedrooms and bathroom/WC on the upper floor. The house has gas central heating. Externally there is a super southerly facing mainly level lawned garden and pedestrian door to the single garage. The house does require some modernisation and is being sold with no chain. EPC E 52.

01752 896020 | info@millingtontunnickliff.co.uk | 19 Fore Street, Ivybridge, Devon, PL21 9AB



MILLINGTON TUNNICLIFF

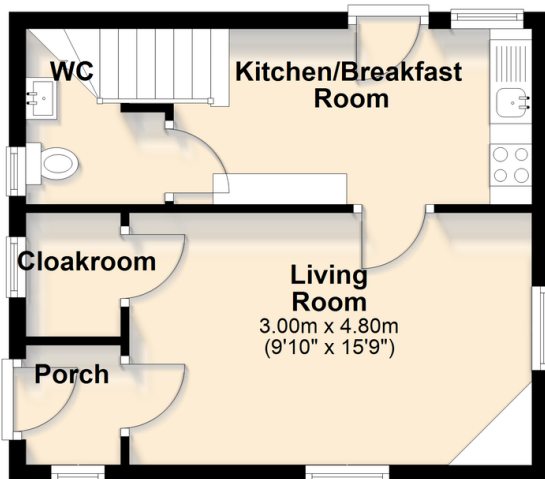
www.millingtontunnickliff.co.uk

Key Features

- 2 Double Bedroom Detached Cottage
- Spacious Living Room
- Cloakroom
- Super Southerly Facing Rear Garden
- Single Garage
- Gas Central Heating
- Popular South Hams Village Location
- First Floor Bathroom/WC
- EPC E 52
- No Chain

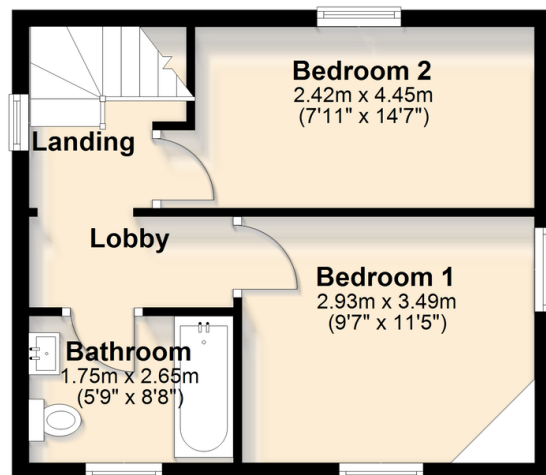
Ground Floor

Approx. 31.3 sq. metres (337.1 sq. feet)



First Floor

Approx. 31.4 sq. metres (337.8 sq. feet)



Total area: approx. 62.7 sq. metres (674.9 sq. feet)