



MILLINGTON TUNNICLIFF

www.millingtontunncliffe.co.uk

Bridge Park, Ivybridge, PL21 0AT

£340,000

3 1 1



A well-presented 1930s three-bedroom end-of-terrace home, discreetly positioned in a quiet setting within Ivybridge. This charming property offers off-road parking for two vehicles and boasts a mature garden to the rear, perfect for outdoor enjoyment. Internally, the accommodation is generously proportioned and comprises a welcoming lounge, a spacious kitchen/diner, sunroom, three bedrooms, a family bathroom, and an additional loft room offering flexible use. Finished to a good standard throughout, this property represents an excellent opportunity for a variety of buyers. Early viewing is highly recommended. EPC E 53.

01752 896020 | info@millingtontunncliffe.co.uk | 19 Fore Street, Ivybridge, Devon, PL21 9AB

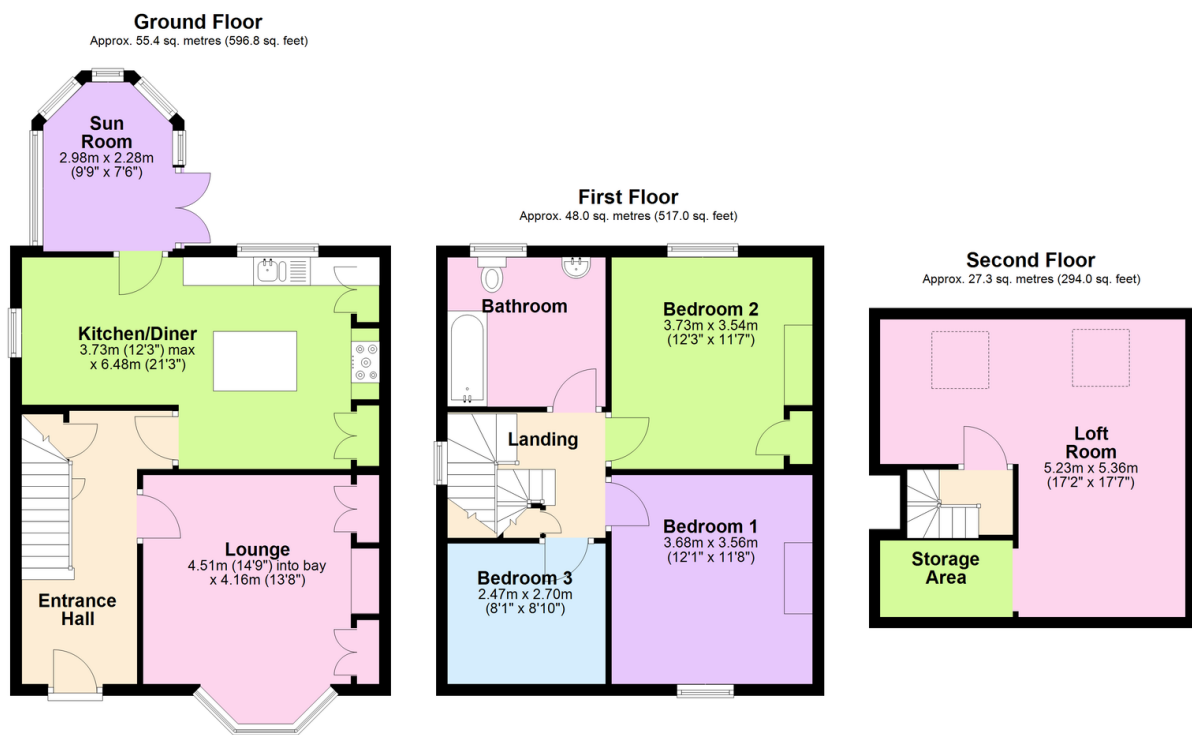


MILLINGTON TUNNICLIFF

www.millingtontunncliffe.co.uk

Key Features

- Charming 1930's Three Bedroom End Of Terrace Home
- Tucked Away Location In The Heart Of Ivybridge
- Off Road Parking For Two Vehicles
- Three Bedrooms & Loft Room
- Lounge With Bay Window
- Open Plan Kitchen/Diner
- Sun Room
- Family Bathroom
- Rear Gardens
- GCH & DG



Total area: approx. 130.8 sq. metres (1407.8 sq. feet)

01752 896020 | info@millingtontunncliffe.co.uk | 19 Fore Street, Ivybridge, Devon, PL21 9AB