



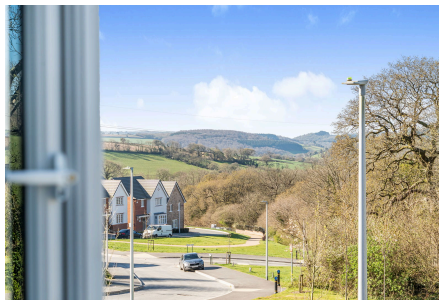
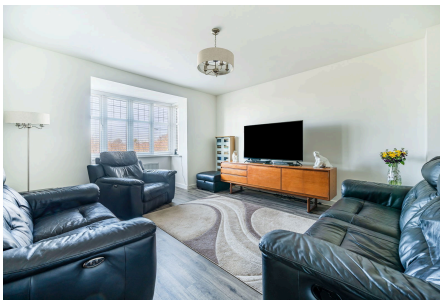
MILLINGTON TUNNICLIFF

www.millingtontunnickliff.co.uk

27 Furzeland, Filham Chase

£495,000

4 2 2



A 4 bedroom detached house located on popular Filham Chase development, set on the eastern edge of Ivybridge convenient to local facilities and amenities. Considered the most popular design the 'Wharton' comprises an entrance hall, cloakroom, living room and open plan integrated kitchen/dining/family room on the ground floor, together with landing, the 4 bedrooms, family 4 piece bathroom and en suite shower room on the upper floor. externally there is a private driveway to the garage at side, an enclosed garden and feature home office. The house is Upvc double glazed and gas centrally heated. EPC B 84.

01752 896020 | info@millingtontunnickliff.co.uk | 19 Fore Street, Ivybridge, Devon, PL21 9AB



MILLINGTON TUNNICLIFF

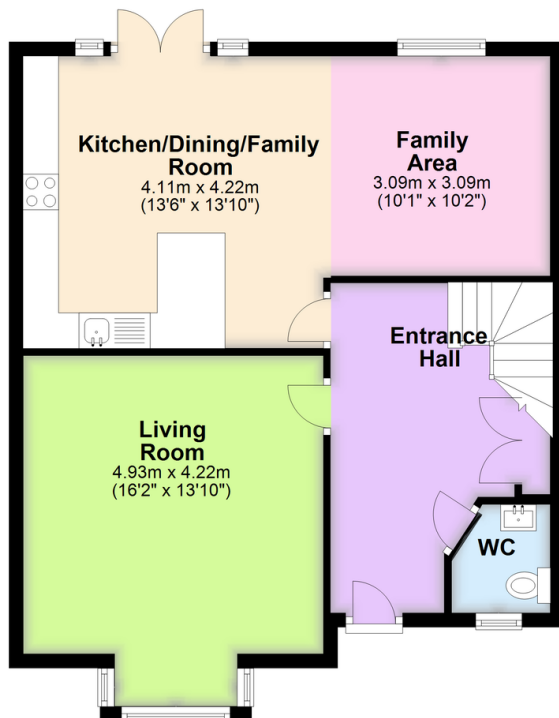
www.millingtontunnickliff.co.uk

Key Features

- 4 Bedroom Detached House
- En Suite Shower/WC
- Elevated Southerly Outlook At Front
- Feature Home Office
- Gas Central Heating
- Popular Wharton Design On Filham Chase
- Feature Integrated Kitchen/Dining/Family Room
- Private Driveway And Garage
- Upvc Double Glazing
- EPC B 84

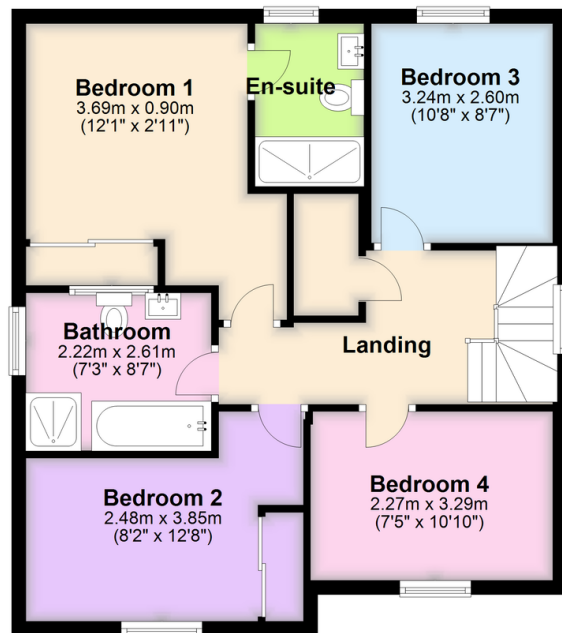
Ground Floor

Approx. 61.5 sq. metres (661.5 sq. feet)



First Floor

Approx. 61.3 sq. metres (660.2 sq. feet)



Total area: approx. 122.8 sq. metres (1321.7 sq. feet)

01752 896020 | info@millingtontunnickliff.co.uk | 19 Fore Street, Ivybridge, Devon, PL21 9AB